



**Regulatory update and ratings following CQC inspection**

Sue Harri  
Chief Executive O

25 April

# About us

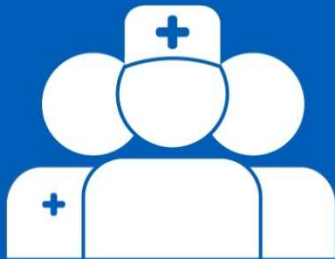
Established on...



Nearly one million service user contacts

# £187,000,000

Annual income for 2017-18



# 4,086

We employed 4,086 clinical and non-clinical staff in 2017-18 (2,899 WTEs)



Portsmouth, Southampton and specialist services pan Hampshire



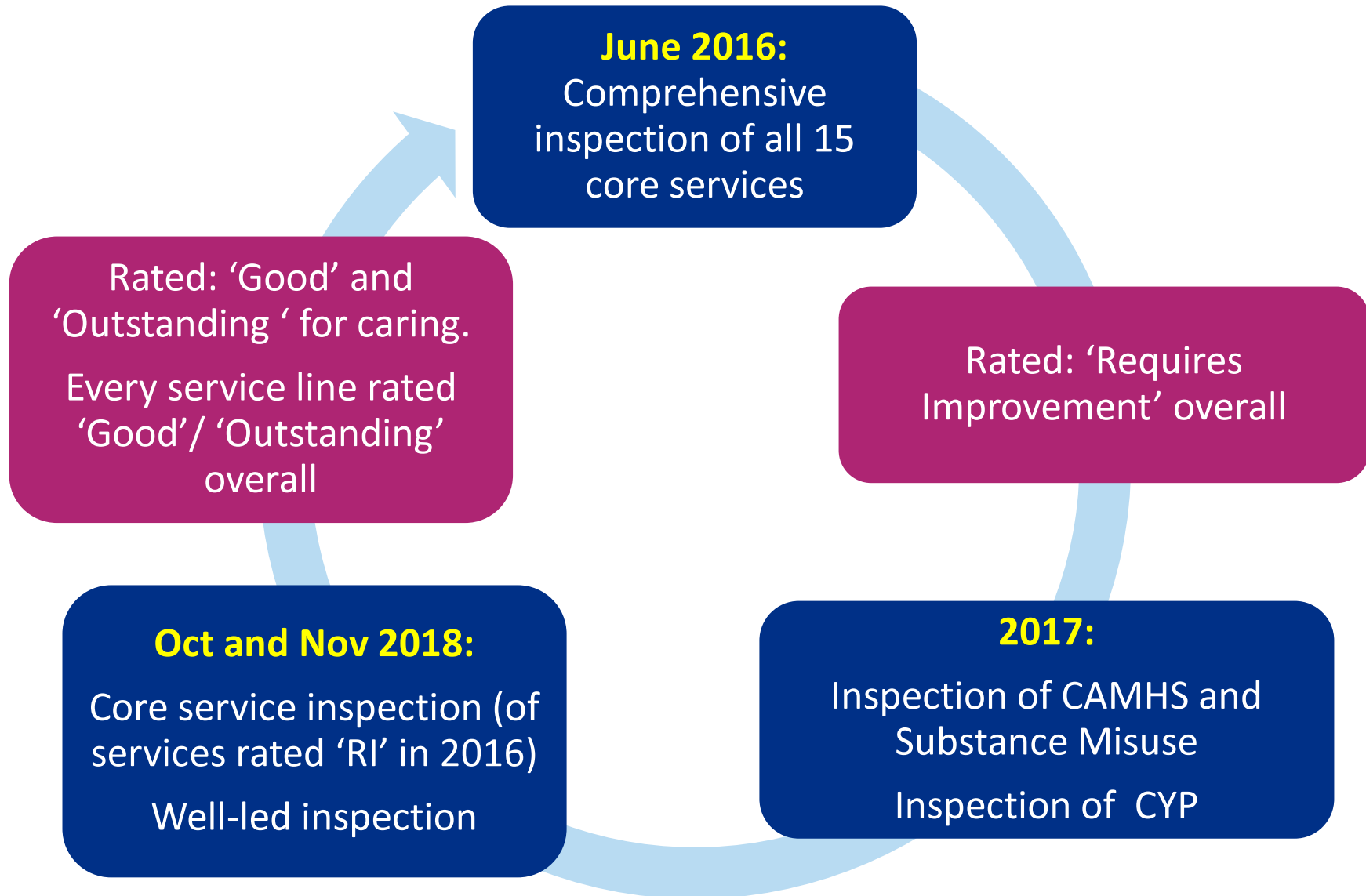
## Our Strategy

At Solent NHS Trust we all share an ambitious vision to **make a difference** by keeping more people **healthy, safe** and **independent** in, or close to their own homes.

**People, values** and **culture** drives us. The best people, doing their best work, in pursuit of our vision. People dedicated to giving **great care** to our service users and patients, and **great value** to our partners.

We aspire to be the **partner of choice** for other service providers. With them we will **reach even more people**, and care for them through even more stages of their lives. Ultimately it is the **people** we care for who will tell us if we are successful and who **will help shape our future care**.

# Our improvement journey



2016						
OVERALL	RI	RI	G	G	RI	RI
Domains	Safe	Effective	Caring	Responsive	Well Led	Overall
<b>Community Services Rating</b>						
CHS – Adults	RI	G	G	G	G	G
CHS - CYPF	I	RI	G	RI	RI	RI
CHS – inpatient	G	G	G	G	G	G
End of life	G	G	G	G	G	G
Sexual Health	G	G	G	G	G	G
<b>Overall</b>	RI	G	G	G	G	G
<b>Mental Health Rating</b>						
PICU	RI	G	G	G	G	G
Long stay/Rehab	RI	G	G	G	G	G
OPMH – Inpatient	RI	RI	G	G	RI	RI
CMH - AMH	G	G	G	G	G	G
MH Crisis	G	G	G	G	RI	G
CAMHS	I	RI	G	RI	RI	RI
CMH- OPMH	RI	RI	NR	G	RI	RI
LD	G	O	O	O	O	O
SMS	I	RI	G	RI	RI	RI
<b>Overall</b>	RI	RI	G	G	RI	RI
<b>PMS Rating</b>						
Adelaide	G	G	G	G	G	G

## Areas of 'outstanding' practice

Clear and ambitious vision

Learning and quality improvement culture

Compliance with IG

Strong leadership and development within the organisation

The active role we take in joining up, and shaping, future care

The take up for the national Child Monitoring Programme

Results in National Institute of Health Research's annual league tables

Young Shapers: Involving young people in the development of services

Our holistic approach to physical and mental health

## Southampton areas of outstanding practice

Solent Moisture  
Pathway

Diabetes education  
public seminars

Cerebral Palsy

Multidisciplinary  
and coordinated  
pathways for Stroke  
patients at home.

UNICEF UK Baby  
Friendly Initiative

Child at the Centre

Intervention  
physiotherapy for  
people with  
Parkinson's Disease

'15 Steps' Challenge

Children's Palliative  
Care

## Areas for improvement

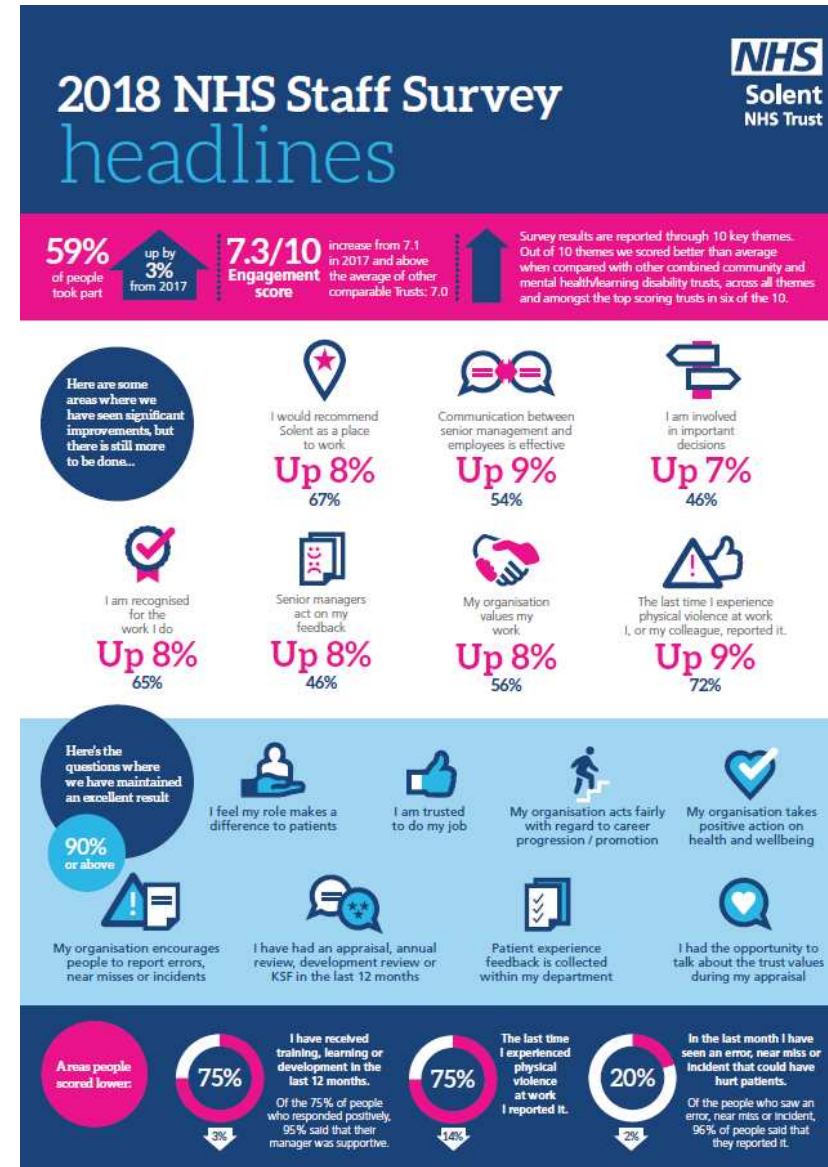
Requirement Notice for breach of Regulation 12 (2)(g):  
The proper and safe management of medicines.

*One small discrete location in mental health services in  
Portsmouth*

36 areas of minor breaches of regulations.  
Not mandated, but positively influence Trusts to deliver  
best practice.



# Post inspection update: NHS Staff Survey results





**Thank you and questions**