

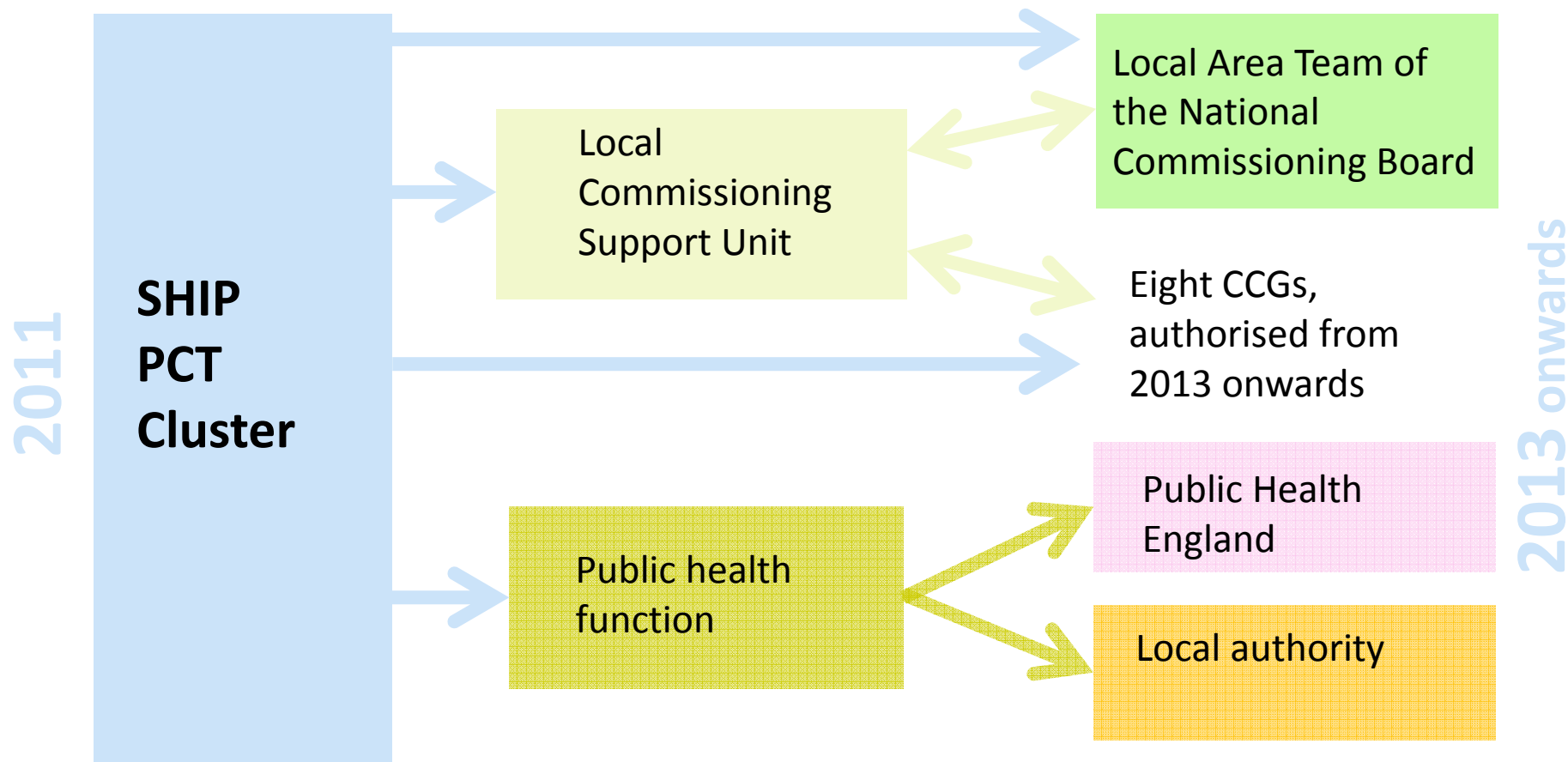


Implementing the NHS reforms in Southampton, Hampshire, Isle of Wight and Portsmouth

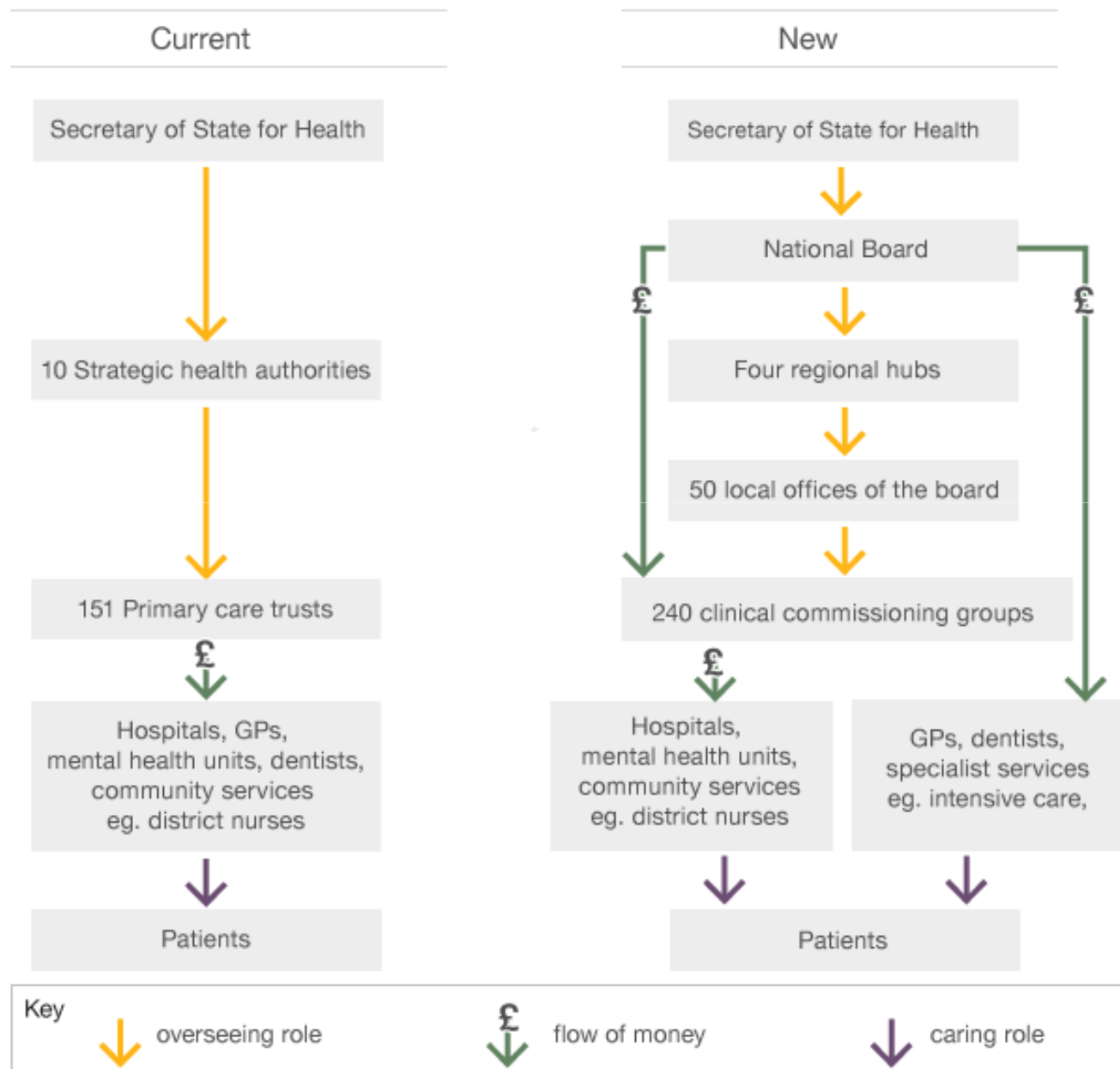
Background

- July 2010 - the Government published its long term vision for the NHS: White Paper, 'Equity and Excellence: Liberating the NHS'
- The three principles at the centre of these reforms are:
 - Giving patients more power
 - Focusing on healthcare and quality standards, and
 - Giving frontline professionals much greater freedom and a strong leadership role.
- Decision making will shift to local groups of clinicians, called Clinical Commissioning Groups (CCGs)
- A new NHS Commissioning Board will be established, responsible for overseeing the CCGs and ensuring that the NHS delivers better outcomes for patients
- Local Authorities will take responsibility for our Public Health teams, and become responsible for public health outcomes
- Action to protect and promote the health of the population will be led nationally by a new public health service - Public Health England

What's happening?



The structure of the NHS





Commissioning Board
A special health authority

National Commissioning Board

Role of the NHS Commissioning Board

- Responsible for ensuring that the NHS delivers better outcomes for patients within its available resources by:
 - providing leadership in the delivery of the NHS Outcomes Framework
 - Holding CCGs to account
 - Supporting choice and competition
 - Ensuring on-going emergency planning and resilience
- Will work with CCGs and other partners to:
 - Improve health outcomes
 - Reduce health inequalities
 - Tackle the QIPP challenges
- Quality and clinical leadership will be central in all it does
- It will be a single, nationwide organisation, with matrix-working at its heart to provide simplicity, aid efficiency and ensure a consistent approach

Functions of the NHSCB



Commissioning Board
A special health authority

Chief of Staff	<ul style="list-style-type: none">• Human Resources• Organisation Development
Commissioning Development	<ul style="list-style-type: none">• Commissioning support, capacity and capability building• Commissioning guidance and tools• National primary care contracts
Finance and Performance	<ul style="list-style-type: none">• Financial strategy• Financial monitoring of CCGs• Planning and accountability
Improvement and Transformation	<ul style="list-style-type: none">• Innovation and transformation• Leadership development• Strategy
Medical	<ul style="list-style-type: none">• Improving outcomes: Domains 1-3
Nursing	<ul style="list-style-type: none">• Improving outcomes: Domains 4-5
Operations	<ul style="list-style-type: none">• Oversight of sectors and field force• CCG authorisation• Direct commissioning
Patient and public engagement, insight and informatics	<ul style="list-style-type: none">• Information provision• Patient insight• Engagement of public, patient and carers
Policy, corporate development and partnerships	<ul style="list-style-type: none">• NHS Mandate• Partnerships• Policy

Role of the Operations Directorate

- Directly commission and oversee delivery of:
 - Primary commissioning
 - Specialist commissioning
 - Military health
 - Offender health and
 - Public health (screening)
- Assure, assess and develop CCGs
 - Planning guidance for CCGs to deliver the mandate, NHS Outcomes Framework and the NHS Constitution
 - CCG delivery against planning guidance
 - Ensuring information flows to allow public and parliamentary accountability
- Be responsible for emergency preparedness

Role of the Local Area Team

- 27 Local Area Teams
- Local staff of the Operations Directorate working from a number of office bases across their geographical area
- All will have the same core functions
 - CCG development and assurance
 - Emergency planning, resilience and response
 - Quality and safety
 - Configuration
 - System oversight and partnerships
 - Stakeholder engagement – full partners on HWBBs
- There will be variations in the scope of direct commissioning responsibilities

LAT Commissioning Responsibilities

- All LATs will take on direct commissioning of GP services, dental services, pharmacy and certain optical services
- 10 LATs will lead on specialised commissioning across England
- Designated LATs will host the 4 Strategic Clinical Networks
- A smaller number of LATs will carry out the direct commissioning of services such as military and prison health

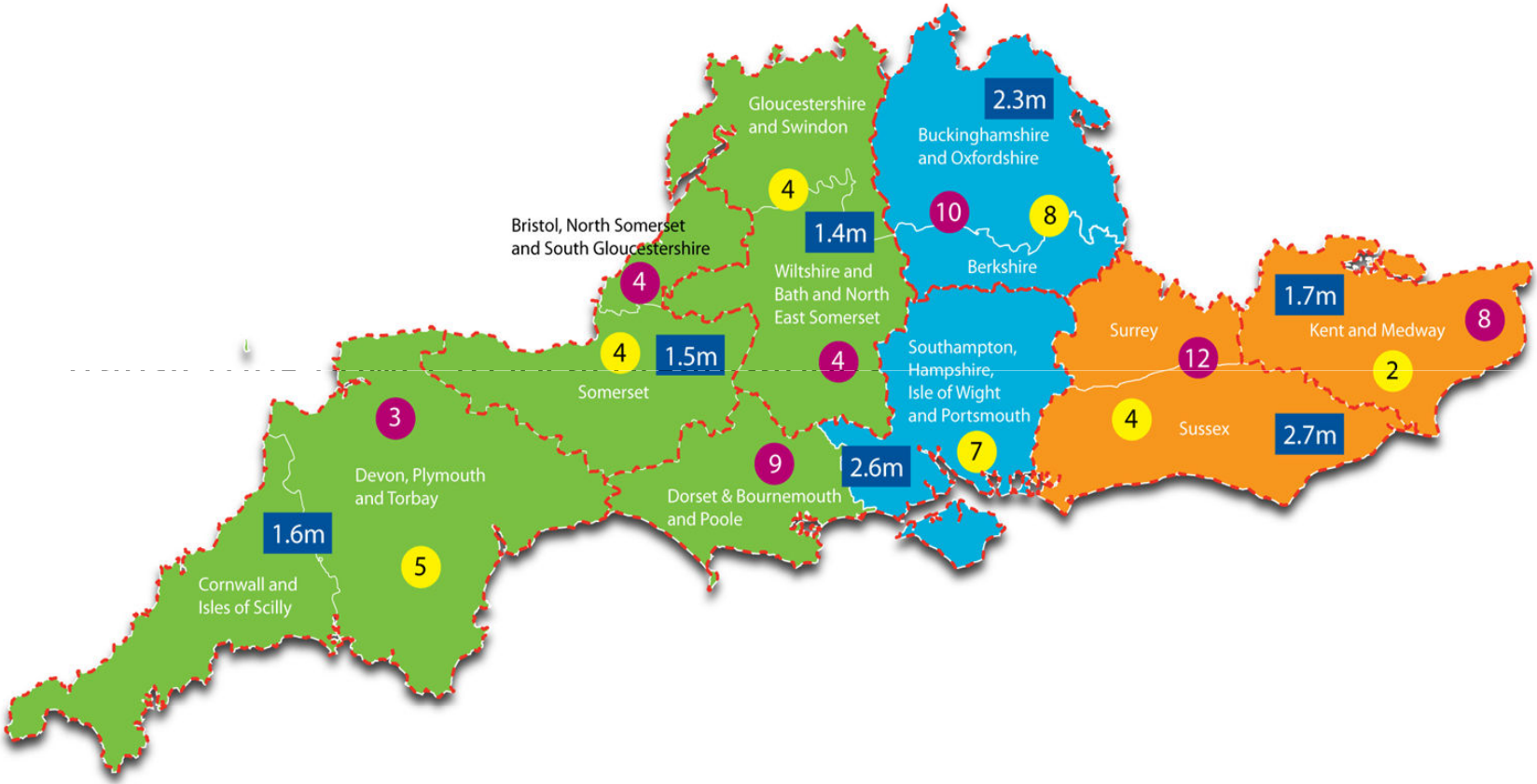
Regions



Commissioning Board
A special health authority

- 4 Regions (North, Midlands and East, London and South)
- All will operate as part of the central functions of the Operations Directorate
- Provide clinical and professional leadership at a sub-national level
- Co-ordinate planning, operational management and emergency preparedness at sub-national level

Local offices of the NHS Commissioning Board - NHS South of England



- 3 Number of CCGs
- 2 Number of Local Authorities (upper tier)
- 3.2m Population
- NHS South Central
- NHS South West
- NHS South East Coast

Wessex Local Area Team

- Population: 2.6 million people
- Budget: around £2 billion (tbc)
- CCGs: 9
- Local Authorities: 7
- Health and Wellbeing Boards: 6
- Local Resilience Forums: 2
- Providers:
 - those providing tertiary services and specialist treatment
 - those providing primary care services
 - those providing screening services
- Relationships:
 - Healthwatch, police, fire, voluntary/third sector organisations
 - all those that are committed to improving services in our area

Wessex Local Area Team

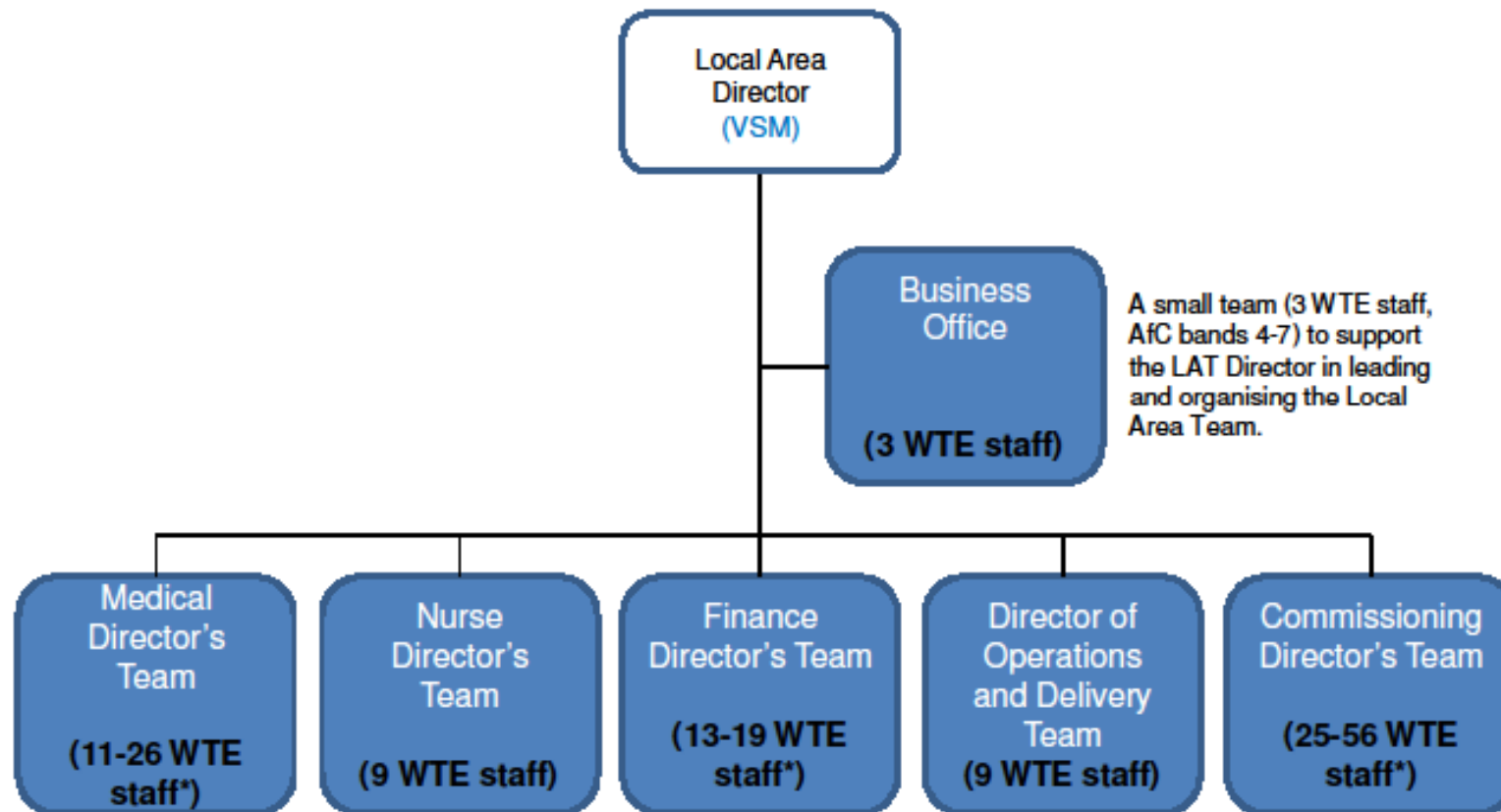
Clinical Networks and Professional Development

- Strategic Clinical Networks
 - Cancer
 - Cardiovascular disease (including cardiac, stroke, diabetes and renal disease)
 - Maternity and children's services
 - Mental health, dementia and neurological conditions
- Alignment with Wessex Local Medical Committees (LMC)
- Coterminous with Wessex LETB
- Expect to have Wessex Academic Health Science Network (AHSN)

Priorities for Wessex

- Set up a high calibre, top performing Local Area Team
 - Work to engage all LAT staff in developing themselves, restoring morale and building the organisation
- Establish and develop positive local relationships
- Establish robust arrangements for CCG assurance
- Work with CCGs and partners to agree and implement the respective HWB Strategies
- Work with the two LRFs to continue robust local resilience and build for the future
- Ensure that the LAT manages its money within budget
- Develop and implement QIPP plans
- Ensure that there are robust arrangements in place to deliver the Mandate across the system
- Improve outcomes for population

Local Area Team structure (71-123 WTE plus embedded PHE staff)



- Team sizes are dependent on the direct commissioning responsibilities of the Local Area Team and whether they host clinical senates/networks.



Clinical Commissioning Groups

What are Clinical Commissioning Groups (CCGs)?

- Groups of GPs and other key healthcare professionals that will be responsible for around 80% of the healthcare budget in their area and will plan and pay for services for the local population.
- Clinical Commissioning Groups (CCGs) formerly known as GP Consortia, will buy services from the hospitals, ambulance service and community services providers.
- All GPs will be a member of the CCG in their area.
- Each CCG will have a governing body.
- Governing bodies will include GPs, nurses, hospital doctors, other healthcare professionals and patient/lay representatives.
- The CCGs will also be responsible for engaging with local people to ensure that the services they are paying for meet your needs.

Authorisation

- **Authorisation is the process by which CCGs will be assessed as ready to take on responsibility for health care budgets for their local communities**
- The authorisation process will be built around six domains – all of which are seen as indicators of success for a CCG and are linked to the legislative requirements that the NHS Commissioning Board must consider when assessing applications

The six domains of authorisation

- A strong clinical and multi-functional focus which brings real added value
- Meaningful engagement with patients, carers and their communities
- Clear and credible plans (meeting QIPP challenges, national requirements and health & wellbeing strategies)
- Proper constitutional and governance arrangements
- Collaborative commissioning arrangements (with other CCGs, local authorities, NHS Commissioning Board)
- Great leaders who individually and collectively make a difference

The timetable for local CCG authorisation

	CCG	360° stakeholder survey	Application submitted to NHS CB(A)	Authorisation decision returned to CCG
Wave 1	Portsmouth	June 2012	2 July 2012	October 2012
Wave 2	West Hampshire. North East Hampshire & Farnham. South Eastern Hampshire. Fareham & Gosport.	July 2012	3 September 2012	November 2012
Wave 3	North Hampshire	September 2012	1 October 2012	December 2012
Wave 4	Southampton	October 2012	1 November 2012	January 2013

SHIP Area – Shadow Clinical Commissioning Groups



Southampton, Hampshire
Isle of Wight & Portsmouth

West Hampshire 536,643

- | | |
|---|---------------------------------|
| Barton and Web Peplow Surgeries | Pine View Practice |
| New Forest Central Medical Group | St Luke's Surgery |
| Twin Oaks Medical Centre | Stokewood Surgery |
| Ringwood Medical Centre | Alma Road Surgery |
| Lyndhurst Surgery | Old Anchor Surgery |
| Testvale Surgery | North Baddesley Surgery |
| Cornerways Medical Centre | The Fryern Surgery |
| Totton Health Centre | Nightingale Surgery |
| Forestside Medical Centre | The Brownhill Surgery |
| Chawton House Surgery | Twyford Surgery |
| Waterfront and Solent Surgery | Stockbridge Surgery |
| The Fordingbridge Surgery | The Andover Hc Medical Practice |
| Forest Gate Surgery | Charlton Hill Surgery |
| The Red & Green Practice | Wickham Group Surgery |
| Wistaria Surgery & Milford Medical Centre | St Clement's Surgery |
| New Milton Health Centre | West Meon |
| The Arnewood Practice | St Paul's Surgery |
| Abbey Mead Surgery | The Adelaide Medical Centre |
| Boyatt Wood Surgery | Mansfield Park Surgery |
| Hedge End Medical Centre | Bishops Waltham Surgery |
| Park & St Francis Surgeries | Shepherd Spring Medical Centre |
| West End Surgery | St Mary's Surgery |
| Bursledon Surgery | Gratton Surgery |
| Leighside Practice | Alresford Surgery |
| Parkside Practice | The Friarsgate Practice |
| St Andrew's Surgery | Whitchurch Surgery |
| Blackthorn Health Centre | Derrydown Clinic |

North Hampshire 208,656

- The Beggarwood Surgery
- Kingsclere Health Centre
- Shakespeare House Health Centre
- Chawton Park Surgery
- East Barn Surgery
- Bramblys Grange Partnership
- Hampshire Healthcare Centre
- The Wilson Practice
- Chineham Medical Centre
- Bermuda Practice
- Clift Surgery
- Overton and Oakley Practice
- South Ham Practice
- Crown Heights Medical Centre
- Rooksdown Practice
- Tadley Medical Partnership
- Boundaries Surgery
- Gillies Health Centre
- The Hackwood Partnership
- Hook & Hartley Wintney Practice
- Odiham Health Centre

North East Hampshire and Farnham 216,000

- | | | |
|-------------------------|---------------------------------|-----------------------------------|
| Giffard Drive Surgery | Jenner House Surgery | Crondall New Surgery |
| Victoria Practice | Branksomewood Healthcare Centre | North Camp Surgery |
| Hartley Corner Surgery | The Border Practice | Dr O'Donnell & Partners |
| The Oaklands Practice | Princes Gardens Surgery | The Ferns Medical Practice |
| Southlea Group Practice | Mayfield Medical Centre | Holly Tree Surgery |
| Milestone Surgery | Southwood Practice | The Farnham Dene Medical Practice |
| Richmond Surgery | The Wellington Practice | The Downing Street Surgery |
| Fleet Medical Centre | Monteagle Surgery | |
| Alexander House Surgery | | |

South Eastern Hampshire 211,764

- | | | |
|-------------------------------|--------------------------------|-------------------------|
| The Bosmere Medical Centre | Cowplain Family Practice | Forest End Surgery |
| Swan Surgery | The Homewell Practice | Queenswood Surgery |
| Horndean Health Centre | Havant Surgery | Emsworth Surgery |
| Clanfield Surgery | The Waterside Medical Practice | The Elms Practice |
| Riverside Partnership | Park Lane Medical Centre | Stakes Lodge Surgery |
| The Grange Surgery | Waterbrook Medical Practice | Greywells Surgery |
| Denmead Health Centre | Liphook & Liss Surgery | Highview Surgery |
| The Village Surgery, Cowplain | The Curlew Practice | Badgerswood Surgery |
| Rowlands Castle Surgery | Staunton Surgery | Liphook Village Surgery |
| Middle Park Surgery | | Pinehill Surgery |
| | | Bentley Village Surgery |

Southampton City 234,600

- | | |
|---------------------------|---------------------------|
| Adelaide GP Surgery | Mulberry House Surgery |
| Aldermoor Surgery | Nichols Town Surgery |
| Alma Medical Centre | Old Fire Station Surgery |
| Atherley House Surgery | Portsmouth Road Surgery |
| Bargate Medical Centre | Raymond Road Surgery |
| Bath Lodge Practice | Regents Park Surgery |
| Bitterne Park Surgery | St Denys Surgery |
| Brook House Surgery | St Mary's Surgery |
| Burgess Road Surgery | St Peter's Surgery |
| Canute Surgery | Spitfire Court Surgery |
| Chessel Practice | Stoneham Lane Surgery |
| Cheviot Road Surgery | Townhill Surgery |
| Grove Medical Practice | University Health Service |
| Highfield Health | Victor Street Surgery |
| Hill Lane Surgery | Walnut Tree Surgery |
| Homeless Health Care Team | West End Road Surgery |
| Ladies Walk Practice | Weston Lane Surgery |
| Linfield Surgery | Woolston Lodge Surgery |
| Lordshill Health Centre | |

Fareham and Gosport 198,834

- | | |
|-----------------------------|---------------------------|
| Bridgery Medical Centre | Brockhurst Medical Centre |
| Lee-on-Solent Health Centre | Rowner Health Centre |
| Manor Way Surgery | Brook Lane Surgery |
| Gosport Medical Centre | Stubbington Surgery |
| Stoke Road Medical Centre | Forton Medical Centre |
| Lockswood Surgery | Bury Road Surgery |
| Portchester Health Centre | Westlands Medical Centre |
| Jubilee Surgery | Waterside Medical Centre |
| Brune Medical Centre | Centre Practice |
| Highlands Medical Centre | The Whiteley Surgery |
| | Gudge Heath Lane Surgery |

Isle of Wight 140,200

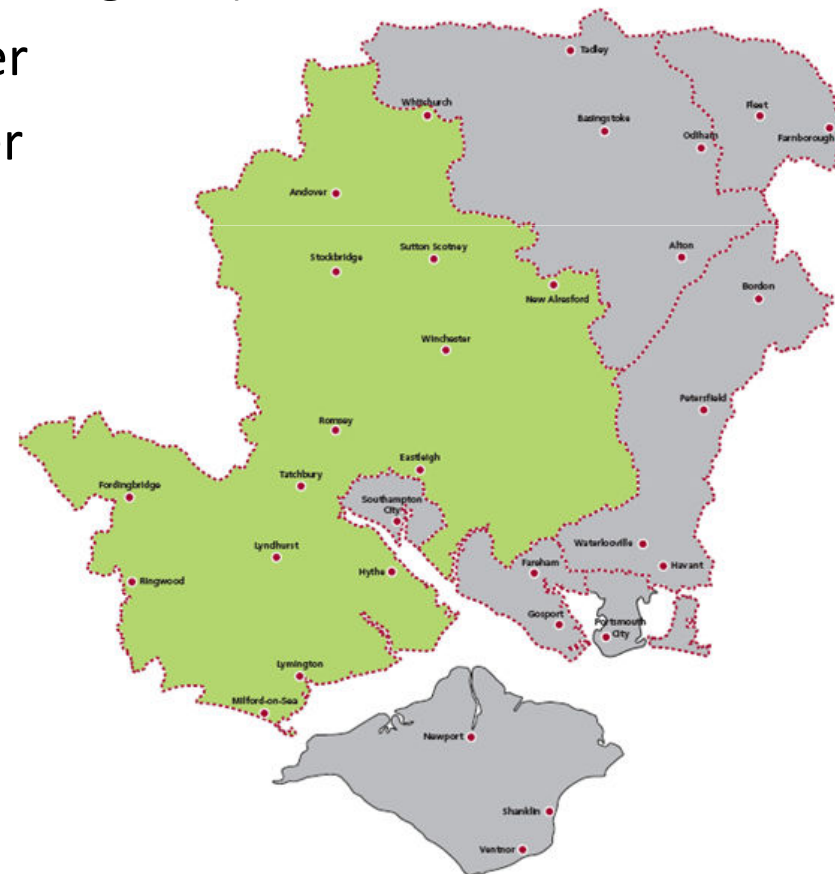
- | | |
|---------------------------|----------------------------|
| Medina Healthcare | Garfield Road Surgery |
| East Cowes Health Centre | Argyll House Surgery |
| Beacon Health Centre | St. Helen's Medical Centre |
| Ventnor Medical Centre | Sandown Health Centre |
| Grove House Surgery | Shanklin Medical Centre |
| South Wight Surgery | Cowes Medical Centre |
| Esplanade Surgery | Brookside Health Centre |
| Carisbrooke Health Centre | The Dower House |
| Beech Grove Surgery | Tower House Surgery |

Portsmouth 200,000

- | | |
|---------------------------------|---------------------------|
| The Health House | Kingston Crescent Surgery |
| Queens Road Surgery | Cosham Park House Surgery |
| Somers Town Health Centre | Paulsgrove Surgery |
| John Pounds Medical Centre | The Devonshire Practice |
| Campbell Road Surgery | Ramfles |
| Waverley Road Surgery | Salisbury Road Surgery |
| Milton Park Practice | The Osborne Practice |
| North Harbour Medical Group | Sunnyside Medical Centre |
| The Drayton Surgery | Lake Road Health Centre |
| Kirklands Surgery | Baffins Surgery |
| Hanway Group Practice | Heyward Road Surgery |
| Northern Road Surgery | Southsea Medical Centre |
| University Surgery | Eastney Health Centre |
| Guidhall Walk Healthcare Centre | Somers Town Health Centre |
| Crookhorn Surgery | Derby Road Group Practice |

Who's who in West Hampshire CCG

- Dr Sarah Schofield, Chair
- Heather Hauschild, Chief Officer (designate)
- Mike Fulford, Chief Finance Officer
- Margaret Wheatcroft, lay member
- Peter Bradshaw, lay member



Who's who in North Hampshire CCG

- Dr Hugh Freeman, Chair
- Dr Sam Hullah, Chief Officer (designate)
- Lisa Briggs, Chief Operating Officer
- Pam Hobbs, Chief Finance Officer
- Colin Godfrey – patient representative



Who's who in North East Hampshire and Farnham CCG



North East Hampshire and Farnham
Clinical Commissioning Group

- Dr Andrew Whitfield, Chair
- Maggie MacIsaac, Chief Officer (designate)
- Jonathon Molyneux, Chief Finance Officer
- Frank Rust - Hampshire Local Involvement Network (LINK) Representative
- Donald Hepburn – Patient Participation Representative

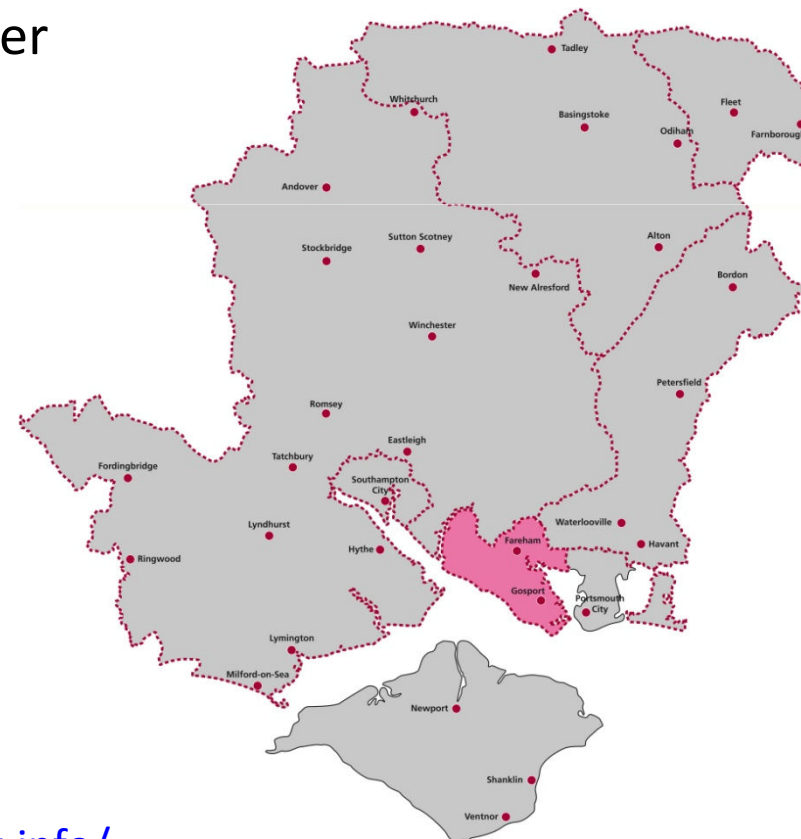


<http://www.northeasthampshireandfarnhamccg.nhs.uk/>

Who's who in Fareham and Gosport CCG

Fareham and Gosport
Clinical Commissioning Group

- Dr David Chilvers, Chair
- Richard Samuel, Chief Officer (designate)
- Andrew Wood, Chief Finance Officer
- Dr Keith Barnard, lay member



Who's who in South Eastern Hampshire CCG

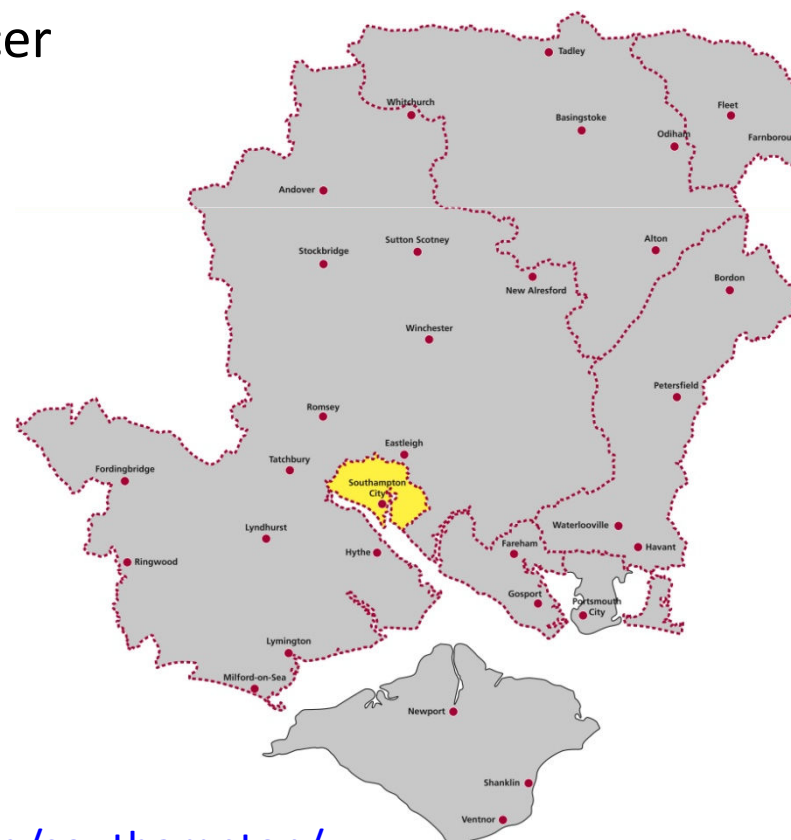
South Eastern Hampshire
Clinical Commissioning Group

- Dr Barbara Rushton, Chair
- Richard Samuel, Chief Officer (designate)
- Andrew Wood, Chief Finance Officer
- Tracey Faraday Drake, lay member
- Susanne Hasselmann, lay member



Who's who in Southampton CCG

- Dr Steve Townsend, Chair
- John Richards, Chief Officer (designate)
- James Rimmer, Chief Finance Officer



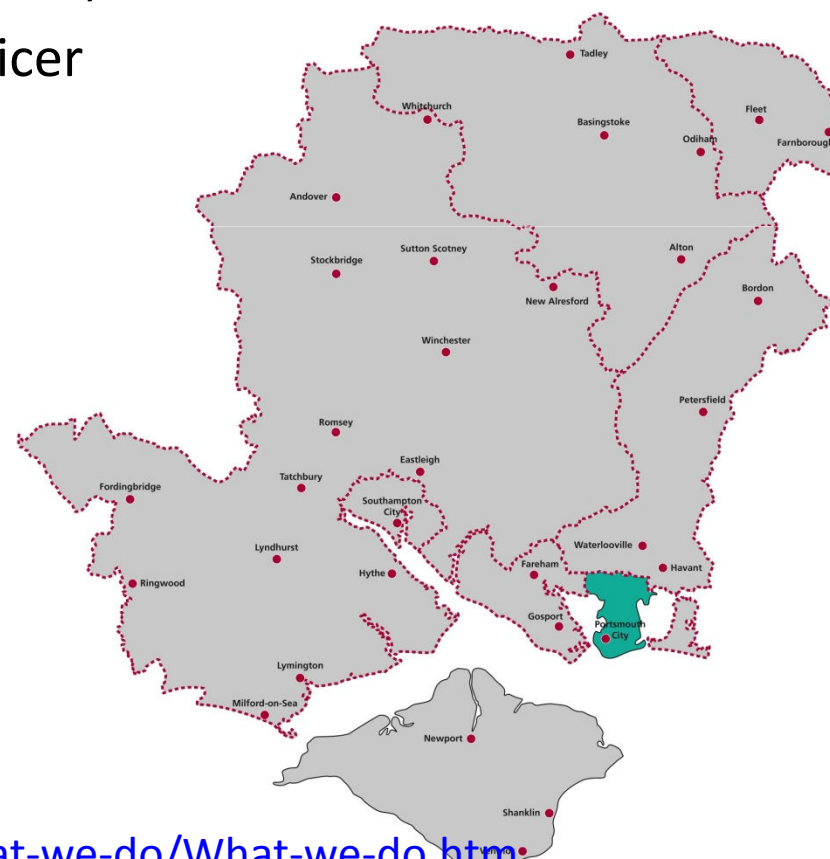
Who's who in Isle of Wight CCG

- Dr John Rivers, Chair
- Helen Shields, Chief Officer (designate)
- Loretta Outhwaite, Chief Finance Officer
- Lay members



Who's who in Portsmouth CCG

- Dr Tim Wilkinson, Chair
- Dr Jim Hogan, Chief Officer (designate)
- Innes Richens, Chief Operating Officer
- Jo Gooch, Chief Finance Officer
- Lay members





Commissioning Support South

Commissioning Support South

Our Vision and Promise

➤ Our Vision

➤ To be the commissioning support service of choice for local CCGs

➤ Our promise describes what we will do to support our customers in delivering their goals:

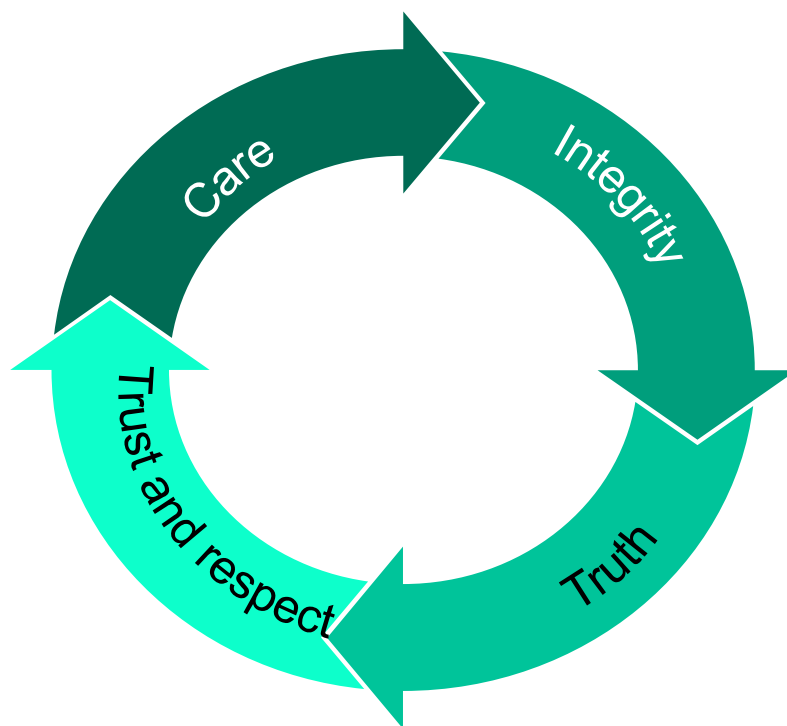
➤ To deliver a high quality, cost effective, efficient service that is flexible, agile and responsive and provides customers with the support they need to address their populations needs;

➤ To ensure customers get a local, knowledgeable service that can adapt to their needs, and be aligned with their vision for the populations healthcare from one team, dedicated to excellence and customer advocacy; and

➤ To be responsive, flexible and innovative in partnership with our customers, and be able to predict their future needs to ensure the effective and efficient implementation of future changes.

Vision

- We are sought after as the commissioning support unit of choice for local clinical commissioning groups: One Team, Many Minds, Best Solutions.
- We deliver our vision and promise through:



Our services

- We provide the services that the CCG wishes to buy
- The following lists the services that we currently hold as part of our core offer
- We are very happy to enter into agreements for services that customers wish to buy that are not listed here
- Our aim is to deliver solutions and outcomes rather than provide just services and as such discussion on the service specifications, outcome required and key performance indicators are as important as the list of services.

- Financial services
- Contracting
- Business intelligence
- Planning and performance
- Communications and engagement
- Information Technology for Commissioning and Primary Care
- Human resource management
- Learning and development
- Equality and diversity
- Strategic workforce expertise
-
- Corporate affairs and governance
- Medicines management
- Quality
- Commissioning for vulnerable adults
- Commissioning for childrens' services
- Clinical and non-clinical procurement
- Project and programme management

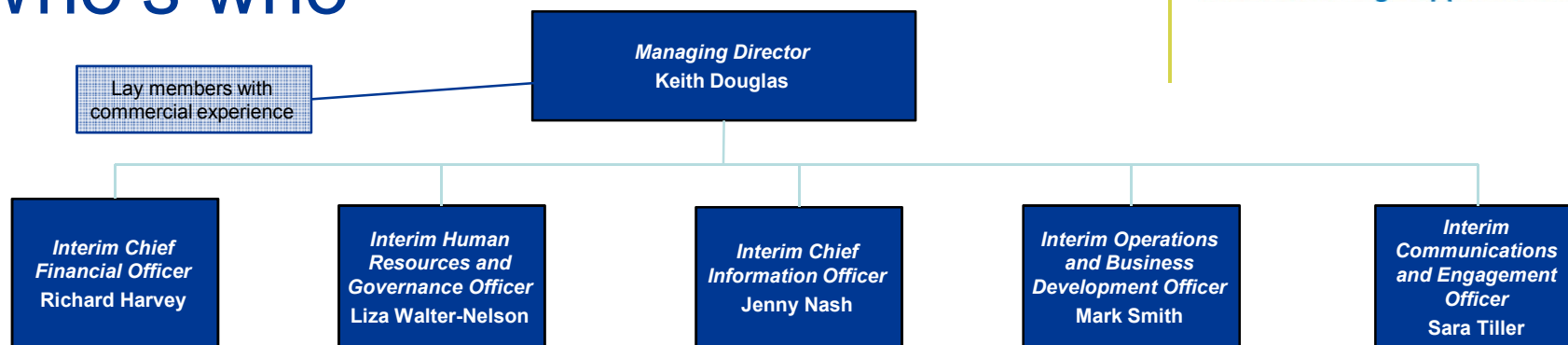
Delivery Model

- Customer facing teams
 - working to and for customers
 - embedded with customers
 - possibly serving more than one customer therefore economies of scale
- Back office – do once for many – economies of scale
- Majority of services are directly provided
- A few services provided via sub-contracting or through our associates e.g.
 - Clinical and non-clinical Procurement
 - Project and procurement management
 - These services where joint working with other CSS/Local authorities etc. best meet the local need

Delivery ethos

- Provide the services our customers want
 - based on delivering outcomes as agreed with the customer
 - being customer focussed via local relationship management
- With integration across health systems, providing a local service that is or is based on best practice from elsewhere
 - Horizon scanning – what's good, how can we learn with or work with others to deliver current best practice
- To be a professional advisory service as well as a transactional service
- Acting as an intelligent and informed agent for the customer in relationships with other providers
 - Sub-contract/prime contract status
 - Minimise hand offs/interactions

Who's who



Questions