



# Yearly Report

2022 / 2023

Southampton Safeguarding  
Childrens Partnership

# Foreword – Scott MacKechnie, Independent Chair and Scrutineer



It is my pleasure to introduce the Annual Report for Southampton Safeguarding Children Partnership (SSCP) for 2022/23. I joined SSCP in the latter part of this reporting year as the Independent Chair and Scrutineer.

The scrutineer part of my role is about challenging and supporting our safeguarding partners in their leadership role. It is about providing scrutiny to audits, assurance work, case reviews and

partnership decision making. Thereby ensuring ours is a multi-agency safeguarding system that continues to learn, develop, and remain effective in keeping our most vulnerable children safe from harm and abuse. A partnership based on the premise of mutual respect, high support, and high challenge, working collaboratively to resolve issues.

I am very aware the year continued to be shaped by the impact of COVID-19, other world events and the cost-of-living crisis being felt across our communities. Partner agencies continued to face additional challenges as a result. Senior leaders from the statutory safeguarding partners remained visible and engaged, working collaboratively to ensure we effectively safeguard and promote the wellbeing of our most vulnerable children, their families, or carers. Our wide range of partners continued to maintain a clear focus on safeguarding children, continuing to deliver the partnership's priorities and active workstreams. Our priorities reflect the issues facing children and their families, in a city that experiences high levels of deprivation and subsequent need but is also diverse and vibrant.



The Children and Families Service has continued to focus on their improvement journey, with tangible progress being made to improve outcomes for Children and their families.

The current landscape in Southampton is challenging, and this is likely to remain, impacting the children and families we work with, alongside the practitioners who provide support and services.

2023/24 will bring change as we move through consultations in response to the government's Stable Homes, Built on Love publication and a new iteration of Working Together to Safeguard Children, which we remain hopeful will strengthen the role of our education partners. I will remain resolutely focused on ensuring local multi agency safeguarding practice remains effective for our children, their families or carers during any changes that may result.

This Annual Report contains information about the work of SSCP which is collectively focussed on improving outcomes for Children and their families across the city and this report shows some of the impact we have made together.

Thank you.

**Scott MacKechnie**  
**Independent Chair and Scrutineer**  
**Southampton Safeguarding Children Partnership**

# Contents

The City Context.....	6
Southampton Safeguarding Children’s Partnership.....	8
The Structure.....	10
Wider Safeguarding Arrangements.....	11
The Improvement Journey.....	14
What have we achieved in 2022 / 23.....	15
Performance Headlines.....	17
Learning from Children and Practice.....	23
Workforce Development.....	31
The future.....	32





# The Yearly Report

This Yearly Report captures the work of the SSCP for the period April 2022 – March 2023, which is a statutory requirement from Working Together 2018, including learning from reviews and an analysis of how effective the arrangements have been in improving the outcomes for children and families in the city.

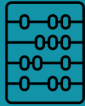
The report looks at the information that helps us to understand what life may be like for children and young people in our city and examines the activity and impact of partners working together.

The report then looks ahead towards the key priorities agreed for 2023 / 24.





# The City Context



In 2022, the estimated population of Southampton was 263,769



17,032 were aged 0 – 5  
40,884 were aged 16 – 24 (impacted by the student population)  
45,717 were aged 0 – 15



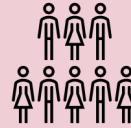
30.4% of Southampton pupils in state funded education are known to be eligible for free school meals compared to the England average of 20.8%



In 2022 / 23 overall absence for Southampton pupils was 8.1%. Persistence absence was 26.8%, authorised absence 5.5% and unauthorised absence 2.8%



55 / 317 most deprived in England  
22.2% of children are estimated to live in relative low income families



In the 2021 census, 68.1% of the population identified as White British, 12.6% as White Other and 10.6% as Asian / British Asian



Southampton has a total of 75 schools and academies, including 55 Primary Phase Schools, 12 Secondary and 8 Special Schools or Pupil Referral Units. Just over 32,000 pupils are educated across these 75 settings within Southampton schools.



In the 2021 census, 43.4% identified that they had no religion, 40.1% identified with the Christian faith, 5.6% Muslim, 1.7% Sikh, 1.3% Hindu and 0.7% as Other

- 2021 Census
- Southampton Data Observatory
- Index of Multiple Deprivation
- Office for health improvement and disparities

# The City Context



Over 1 in 100 15 – 18 year olds have had a hospital admission for self harm, nearly twice that of England



20% of children in Southampton have SEND compared to 15.9% nationally



11% of children in reception and 25.1% of children in Year 6 are obese



The rate of hospital admissions of children and young people for conditions wholly relating to alcohol is increasing in Southampton, against the national trend



Between 40 – 50% of violent crime in Southampton is by children and young people, with a high use of knives



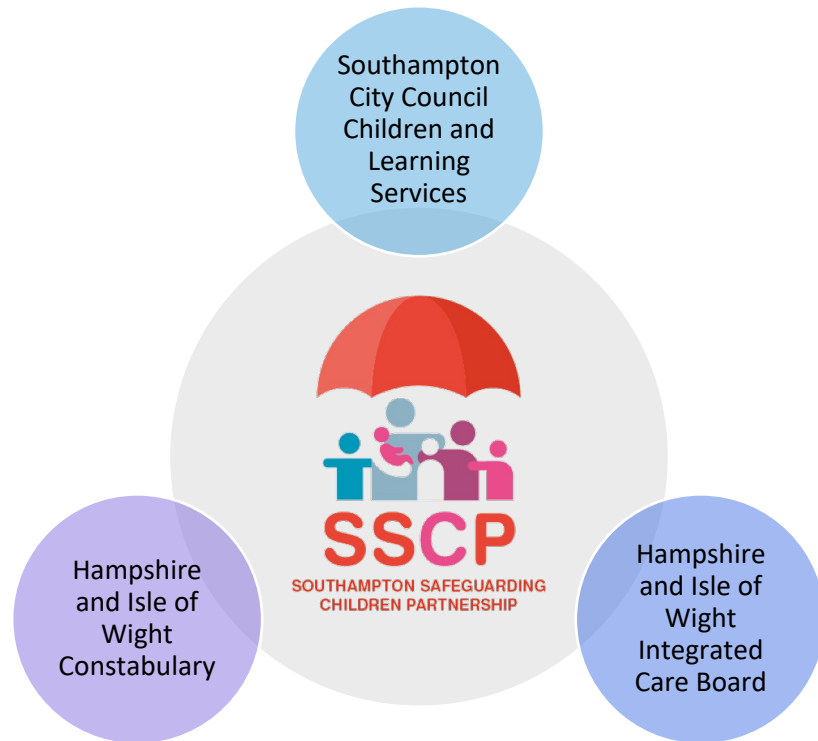
Southampton 16 – 17 year old Not in Employment, Education or Training (NEET) have increased this year to 7.3%. This is above the national figure, but below the SE %

- 2021 Census
- Southampton Data Observatory
- Index of Multiple Deprivation
- Office for health improvement and disparities



# Southampton Safeguarding Childrens Partnership

## Who are we?



The Southampton Safeguarding Children's Partnership is a statutory body as specified by Working Together to Safeguard Children 2018.

The three statutory safeguarding partners work together to gain assurance that partner agencies are working effectively together to safeguard and promote the welfare of children in the city.

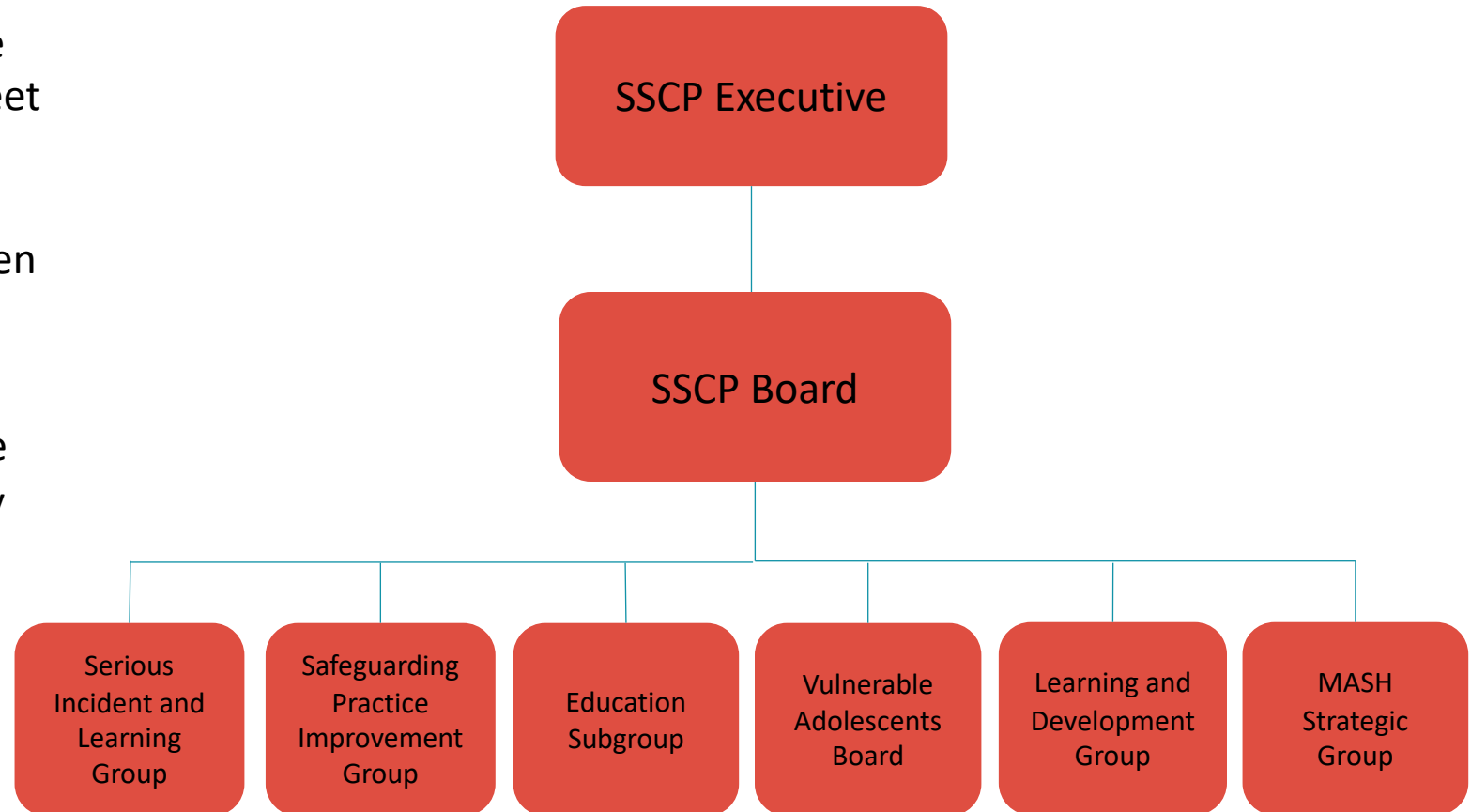
This is achieved by the implementation of local and national learning including from safeguarding children practice reviews, identifying strategic priorities and overseeing how agencies work together.

# We cannot do this alone

- The SSCP has an independent Chair and Scrutineer who provides the leadership, clear focus and scrutiny over the multi-agency safeguarding arrangements to ensure all are contributing effectively, providing challenge and support
- The wider partnership includes contributions from probation, the voluntary sector, Hampshire fire and rescue, South central ambulance service, education, drug and alcohol services (CGL)
- We need to improve how we involve children and young people in the work of the partnership. There are great examples of participation across the multi-agency network and the Partnership Team are prioritising how we ensure the learning reviews are guided by children and young people whose safeguarding we are promoting
- This year we started our first Local Child Safeguarding Practice Review where a young person has been shaping the key lines of enquiry for future learning. This is essential in learning lessons and making a difference, providing a powerful insight into the impact of interventions

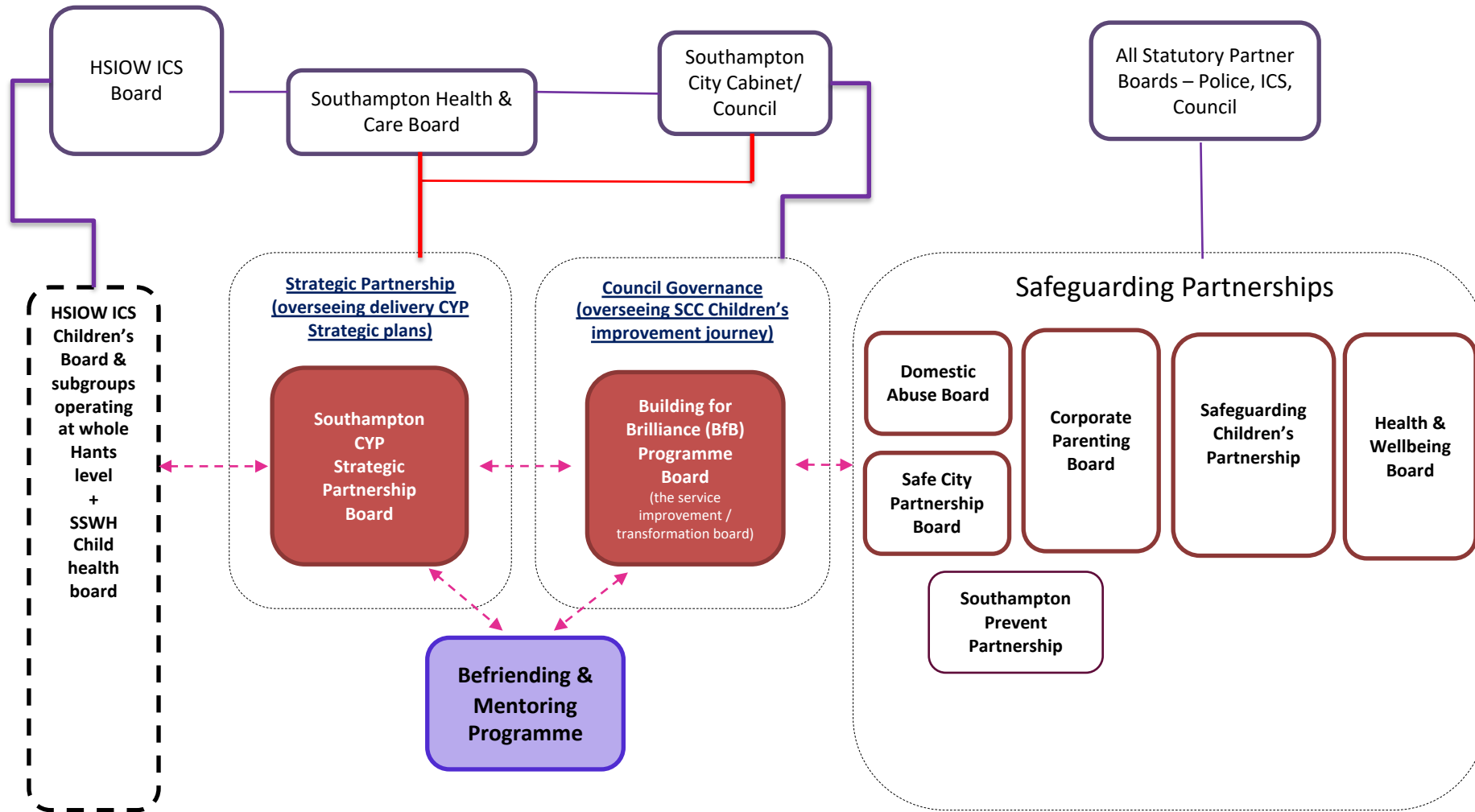
# How do we work together?

- The work of the SSCP is governed by the Executive and SSCP Main Board who meet quarterly to ensure the statutory obligations are fulfilled and progress is reviewed for optimum impact for children and young people.
- Partners contribute to a range of sub-group activity designed to quality assure safeguarding across the city and identify areas for improvement with a range of audit activity, analysis and policy / procedure review.
- In Southampton the sub-groups work collaboratively to facilitate growth and challenge when required.





# Governance Structure



# HIPS Partnership

- Hampshire, the Isle of Wight, Portsmouth and Southampton Safeguarding Childrens Partnerships (HIPS) work together strategically to address common themes. There is a HIPS Executive which co-ordinates the regional work. To support this collaborative agenda there are 4 sub groups; HIPS child exploitation, HIPS Procedures, HIPS Health and the Child Death Overview panel. The Harmful Practices Sub Group also feeds in to the SSCP and SSAB.



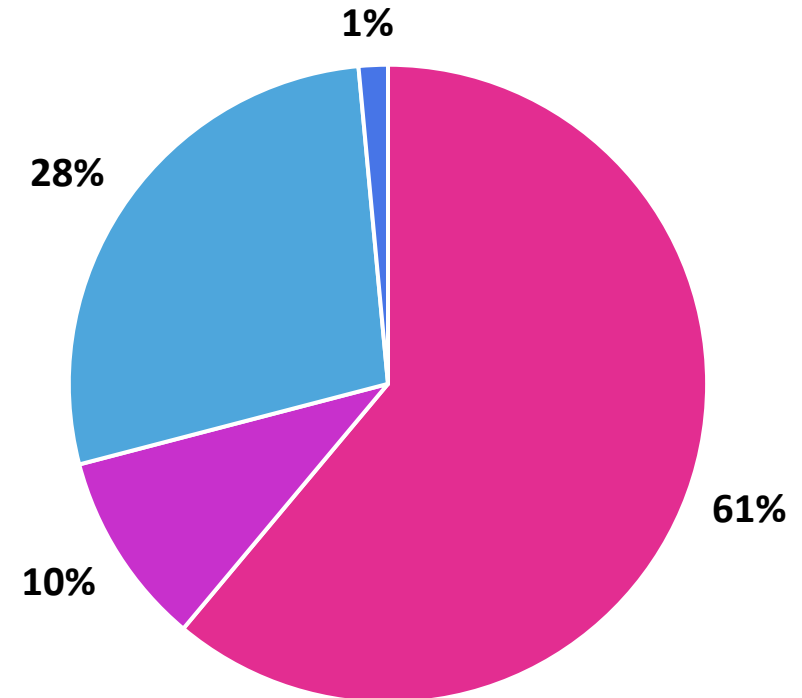
# SSCP Funding

The statutory partners are jointly responsible for the Partnership, which is hosted by the Local Authority.

They provide joint funding and representatives from both the statutory partners and the wider multi-agency partnership participate in the sub-group activity and learning and development work across the city.



Contributions 2022 / 23



- Southampton County Council
- Hampshire and Isle of Wight Constabulary
- Integrated Care Boards
- Probation



# Southampton Children and Learning Service Improvement Journey

- The improvement journey has been overseen by the work of the Improvement Board, with key statutory partners and an independent Chair monitoring and providing respectful challenge
- The Ofsted Focused Visit on Children in Need and Child Protection took place in November 2022, and will inform the full Inspecting Local Authority Childrens Services (ILACS) expected in 2023

## Headlines

Southampton City Council has made progress in how it improves the experiences and outcomes for children in need of help and protection since the last Ofsted visit in May 2021. Most children in need and those subject to child protection plans are visited regularly. They receive help that makes a positive difference to them from social workers, who are now more likely to be permanent members of staff and to have a manageable caseload. On this visit, inspectors did not identify any children at immediate risk of harm

# What we achieved against our priorities in 2022 / 2023



## Neglect toolkit

Alongside rolling out the Neglect Toolkit to Southampton schools, practitioners were provided with a range of additional support to help them work pro-actively to support children and families.

Southampton Safeguarding Children Partnership and a range of professionals have adapted the Toolkit for use with children with special educational needs and disabilities:

<https://southamptonscp.org.uk/neglect-toolkit-children-with-additional-needs/>

## HIPS exploitation Strategy

The Strategy has now been launched across the region and will be monitored and reviewed through the HIPS subgroups

## HIPS CSA Strategy

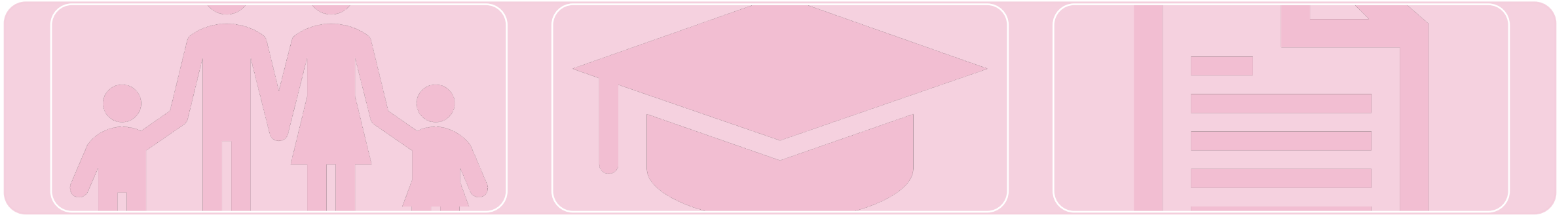
Southampton helped to drive forward the Strategy which has been launched and rolled out and further plans for supporting toolkits are underway

*“The neglect toolkit, devised by practitioners for practitioners, enables us to reduce the subjectivity that is often associated with reporting and evidencing neglect. We use it as a reference tool to calibrate our concerns and share these concerns much more accurately using a common language.*

*Having given evidence in court for a case of neglect, I am both personally and professionally aware of how contentious and difficult the category of neglect can be to substantiate: one person’s unacceptably dirty may be judged as another person’s messy. The toolkit makes decisions about what would qualify as concerns more objective and therefore removes some of the doubt we sometimes feel we have as professionals.*

- *very comprehensive*
- *very useful*
- *day in my life is helpful with conversations*
- *clear and easy to use*
- *clutter toolkit can be used with parents where English is an additional language”* A Southampton School

# What we achieved against our priorities in 2022 / 2023



## Safe and Together Training

The training has been successfully rolled out across Southampton with excellent attendance from Children and Learning and the wider partnership to ensure a consistent approach to domestic abuse cases involves the whole family to support the safeguarding and best outcomes for children and adults

## Education Subgroup

The Education Subgroup has been established and working to ensure the business plan prioritises the educational needs across the city to promote children and young people's participation in education

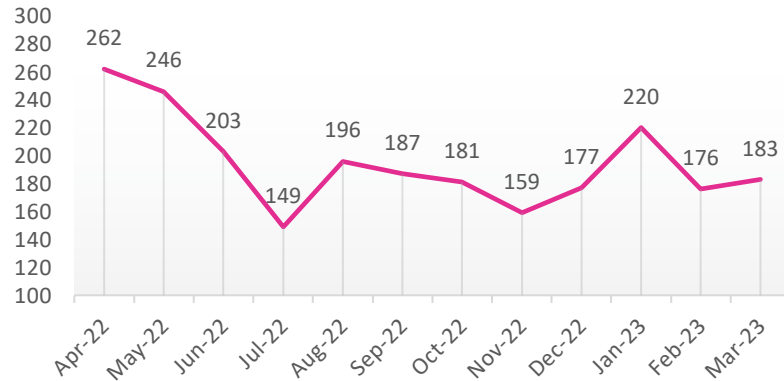
## Policies

The partnership has worked across Southampton and HIPS to produce collaborative domestic abuse and peer on peer (child on child) policies which will support the multi-agency network

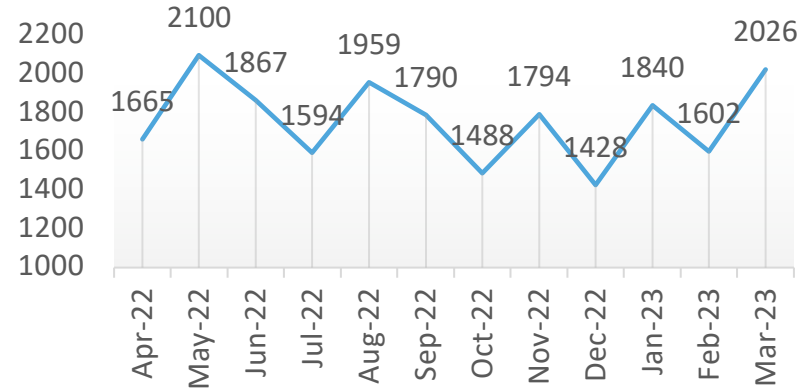


# Performance Headlines

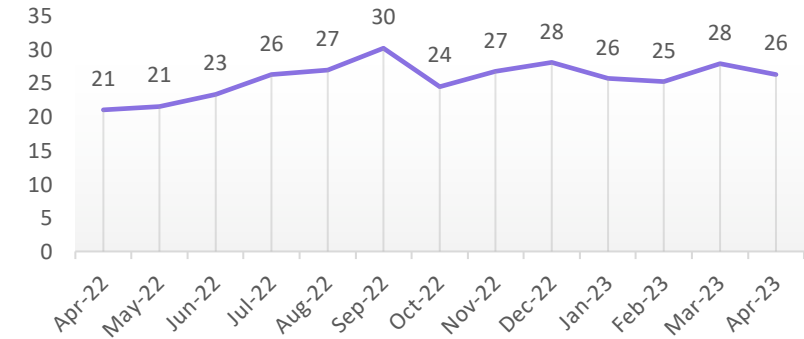
Number of referrals into Early Help



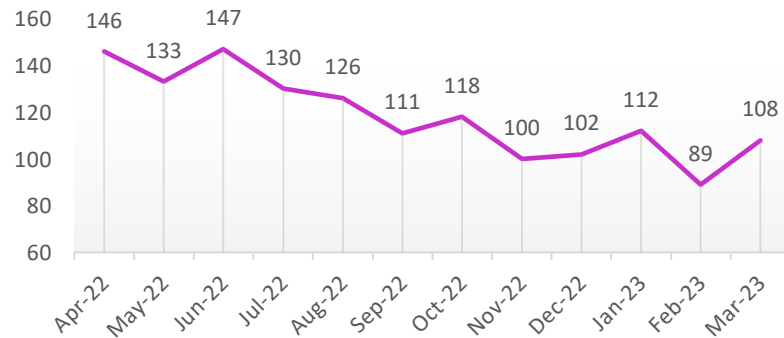
Number of contacts



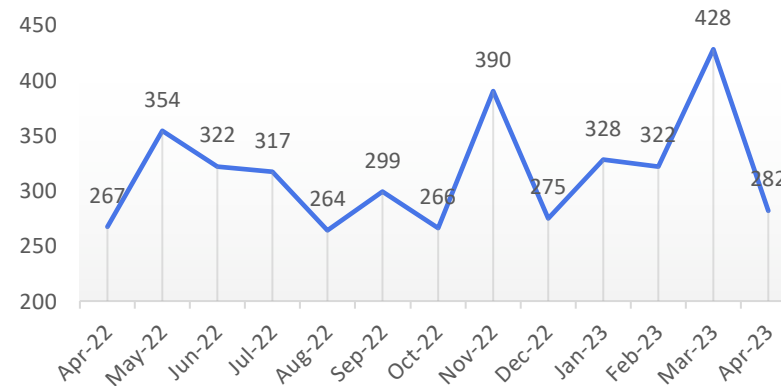
Percentage of re-referrals within 12 months



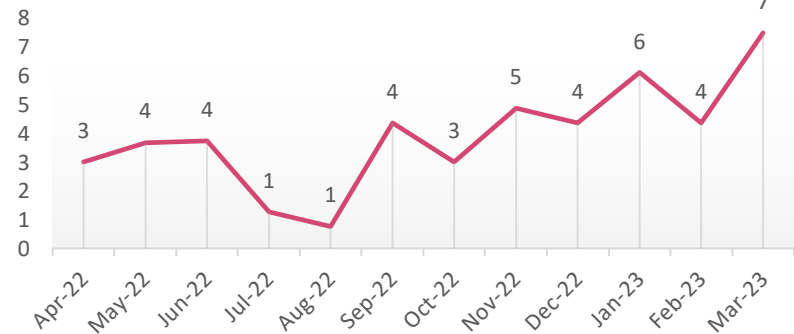
Number of Early Help Assessment started in the month



Number of referrals in the month

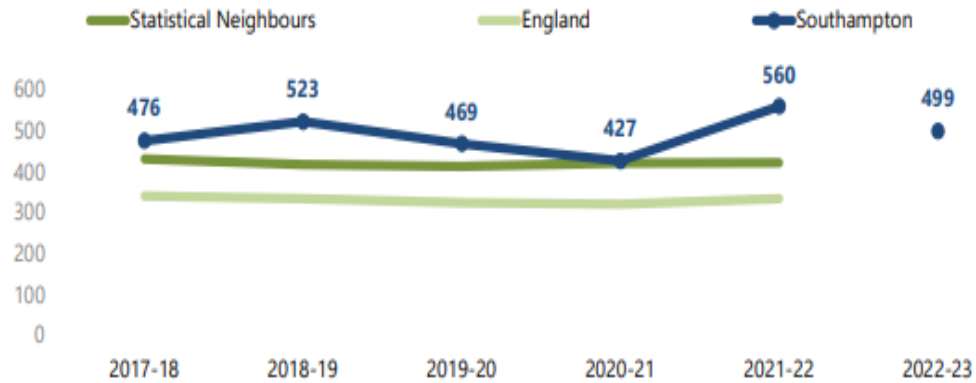


Percentage of referrals that lead to No Further Action

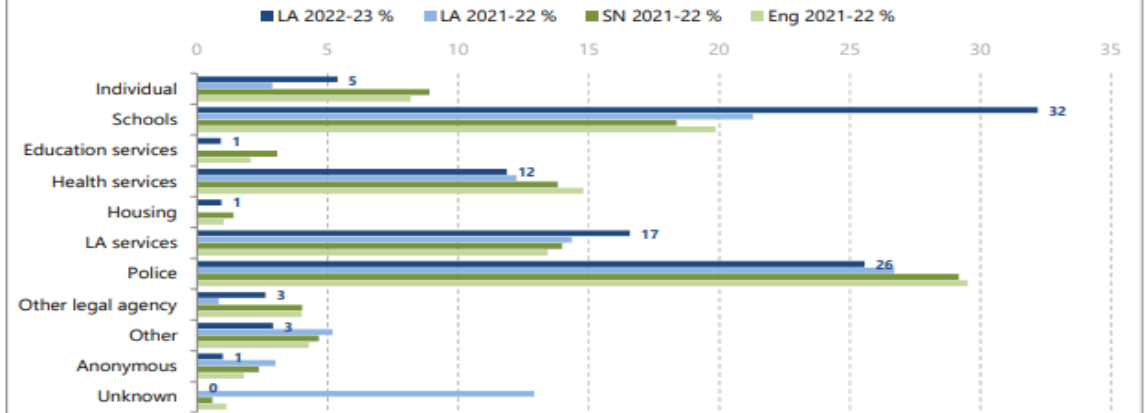


# Performance Headlines

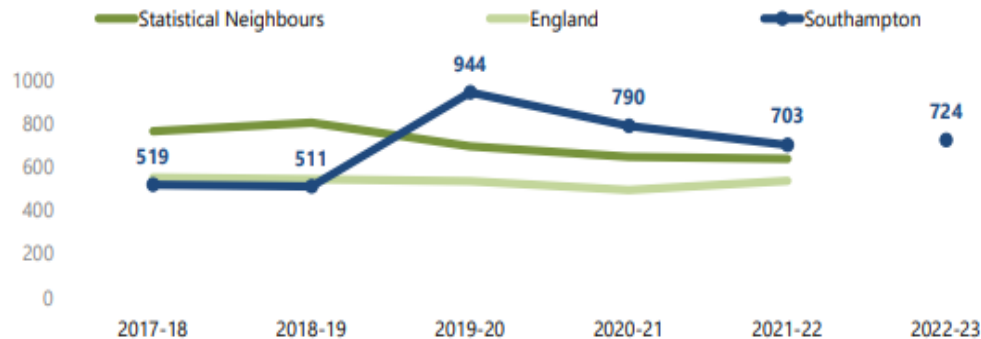
**Children with an open episode at 31 March  
(rate per 10,000 children)**



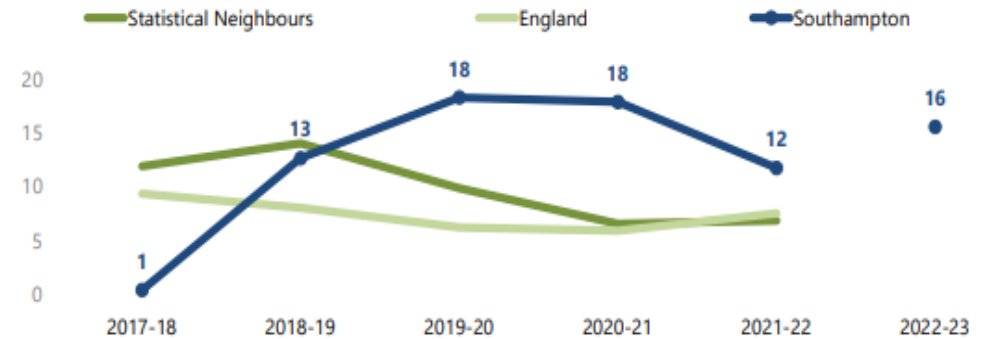
**Referral source  
(%)**



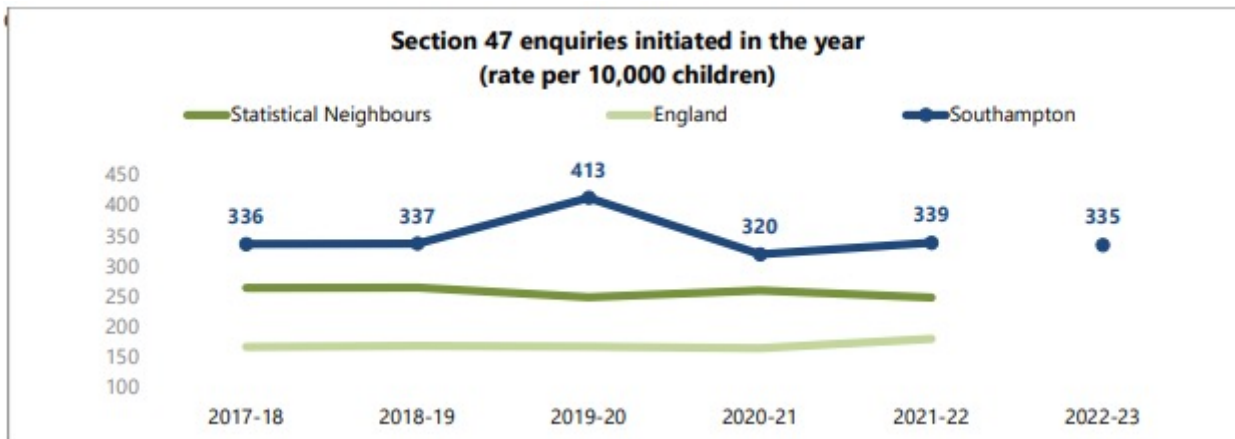
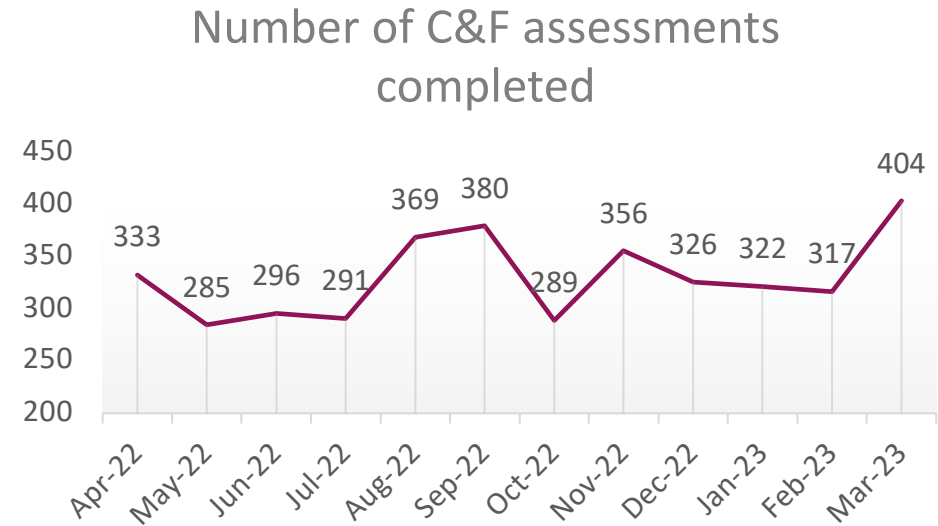
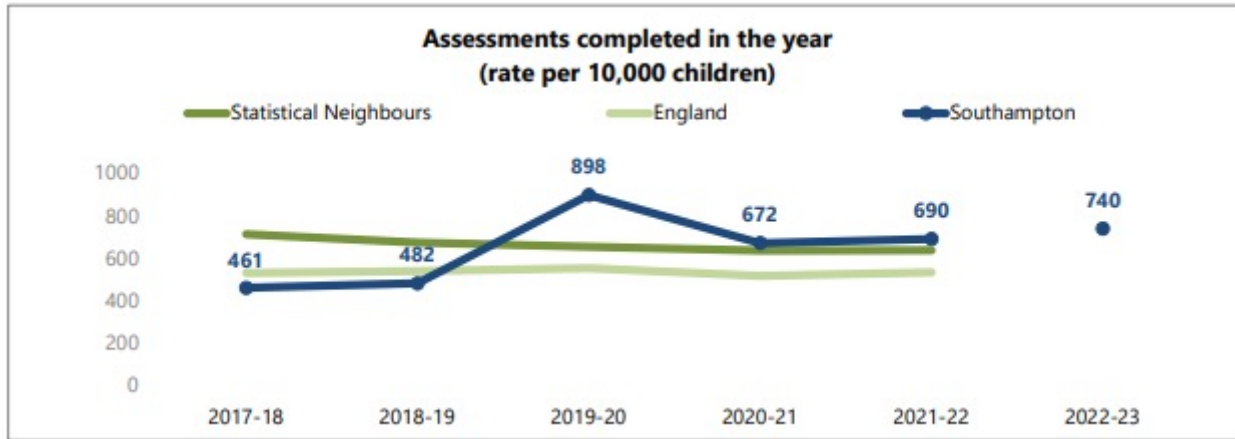
**Referrals received  
(rate per 10,000 children)**



**Referrals with no further action  
(%)**

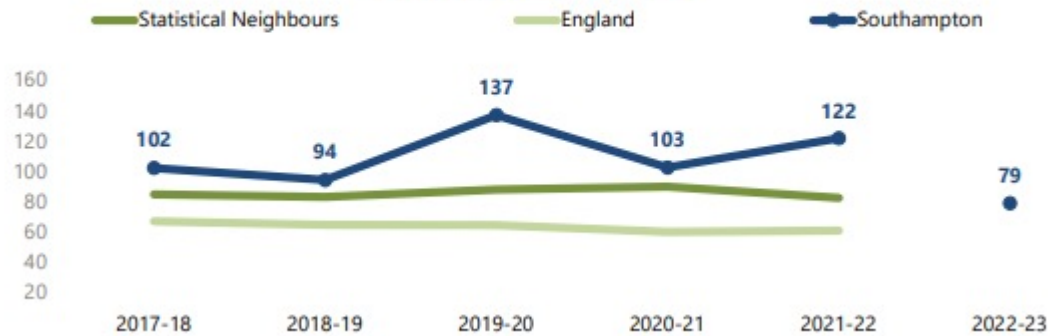


# Performance Headlines

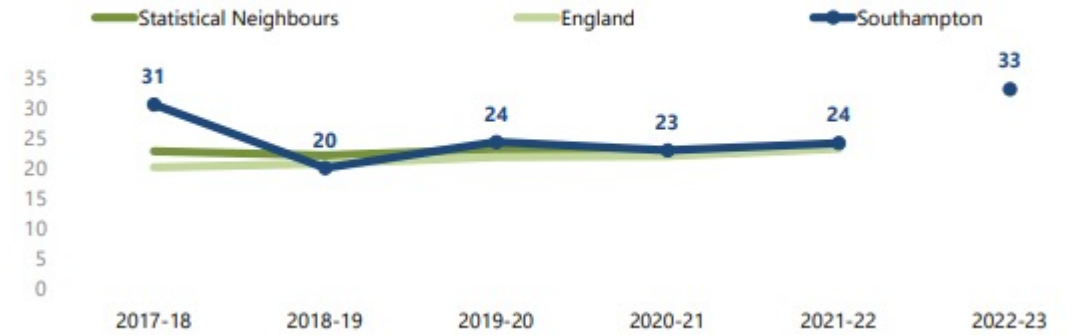


# Performance Headlines

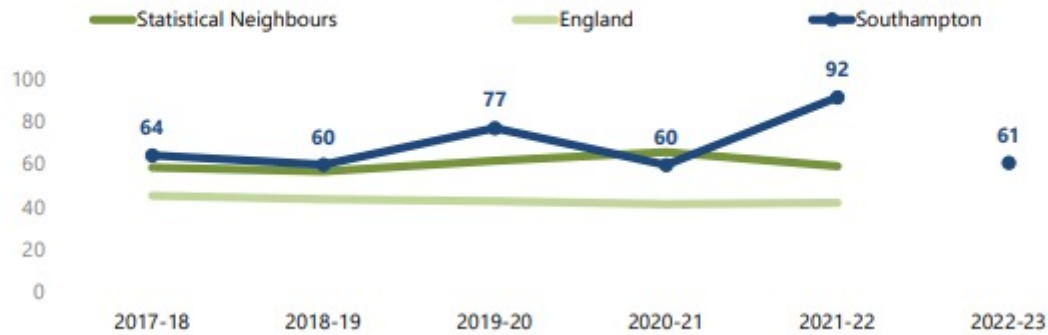
**Initial Child Protection Conferences in the year  
(rate per 10,000 children)**



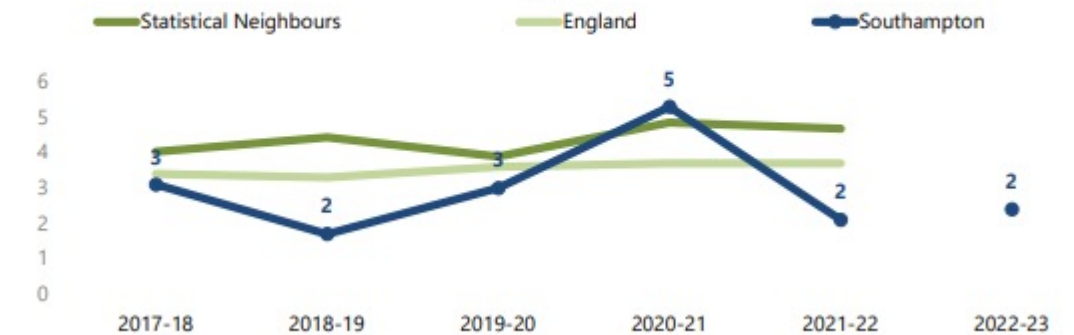
**CP plans started for a second or subsequent time  
(%)**



**Child Protection Plans open at 31 March  
(rate per 10,000 children)**

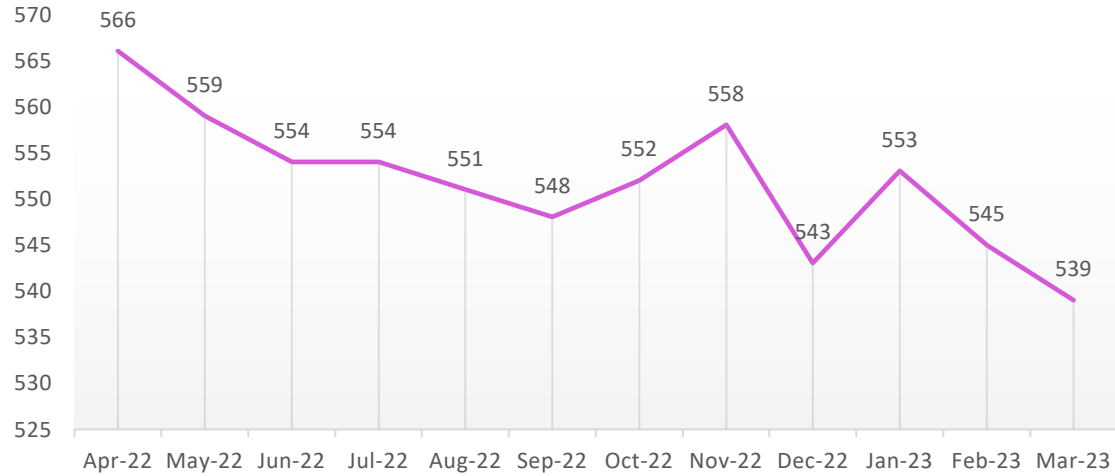


**CP plans ceased after a duration of 2+ years  
(%)**

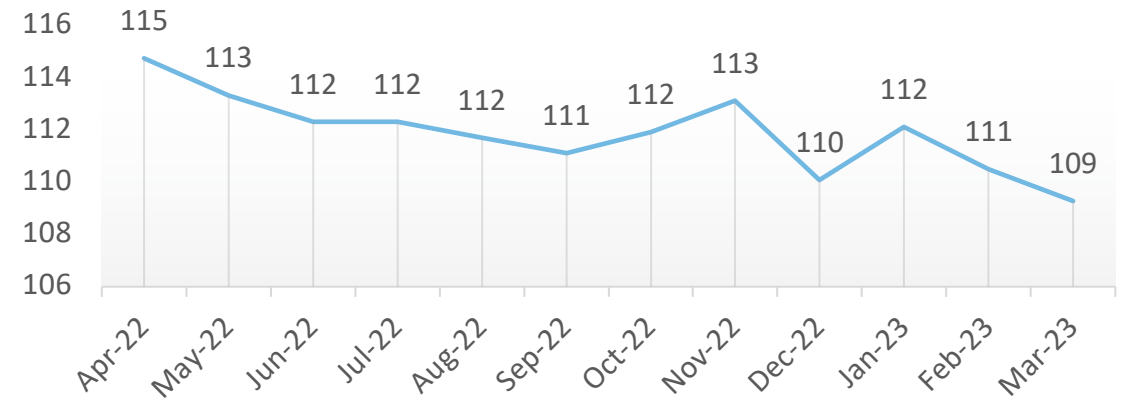


# Performance Headlines

Number of CLA at the end of the month



Rate of CLA per 10,000 under 18 population



# Education – Working Together to improve school attendance May 2022

- Data is regularly provided to monitor and identify pupils and cohorts at risk of poor attendance.
- Targeted actions and access to services are agreed with the local authority
- There is an increasing need to provide creative solutions for small numbers of pupils to engage and educate
- Alternative provision is required to meet the needs that cannot be met in mainstream provision. All stakeholders must be involved in planning and review



# Learning from Children and Practice

- In accordance with [Working Together 2018](#), a Local Safeguarding Partnership should consider undertaking a Local Child Safeguarding Practice Review (LCSPR) when it is thought that the case:
  - highlights or may highlight improvements needed to safeguard and promote the welfare of children, including where those improvements have been previously identified
  - highlights or may highlight recurrent themes in the safeguarding and promotion of the welfare of children
  - highlights or may highlight concerns regarding two or more organisations or agencies working together effectively to safeguard and promote the welfare of children
- is one which the Child Safeguarding Practice Review Panel has considered and concluded a local review may be more appropriate.
- If a case meets the above criteria, it does not mean that a LCSPR must be agreed. It is for the local area to determine the relevance and opportunity for local learning and development.
- Where a case meets criteria for a Serious Incident Notification as per Working Together 2018, the Local Authority is required to notify Ofsted. The Partnership then has 15 days to conduct a Rapid Review and make a formal decision regarding any further review. All decisions are agreed by the Serious Incident Learning Group, the Safeguarding Partners, and the Independent Chair.

# Assurance

- The SILG (Serious Incident Learning Group) meet on a monthly basis with additional meetings as required to fit within the Rapid Review timescale as outlined by the National Panel. Meetings review new referrals, past reviews and interrogate any outstanding actions, considering learning from out of area reviews and national learning. Dissemination of learning is monitored, and assurance is sought on a regular basis regarding implementation and embedding learning from reviews into daily practice through action plans and evidence provided by agencies.
- Childrens Services provide regular assurance around the impact of learning activity through actions plans and with the 'Closing the learning Loop Forum'. This group is chaired by the Principal Social Worker, and is attended by the Lead for audit, the Performance Manager, the Safeguarding Childrens and Adults Partnerships Manager, the Children and Learning Academy Manager and the Service Leads from across Children and Learning. Learning from events such as CSPR, performance analysis, practice audit is brought to this meeting and the group agree how this learning is shared and how practice change is evidenced.

# Local Safeguarding Children Practice Reviews

- In the year 2022 2023, the Southampton Safeguarding Childrens Partnership has received **16 referrals** for consideration at the Serious Incident learning Group.
- **9 Rapid Reviews** have taken place.
- **2 Local Safeguarding Children Practice Reviews** are underway.
- **6** referrals are being included in a **thematic learning process**.
- **1 Local Safeguarding Children Practice Review** is nearing completion following a delay from the previous year. Process are now in place to prevent further unnecessary delays.
- **1 Local Safeguarding Children Practice Review** has been published and is accessible via the website.

The SSCP publication of the Ted LSCPR is available on the website [Southampton Safeguarding Children Partnership – Improving the safety & wellbeing of Southampton's Children & Young People \(southamptonscp.org.uk\)](https://southamptonscp.org.uk)

## The Background

In March 2022, a LSCPR was commissioned to consider the professional involvement with a child named “Ted”

Ted was 1 year old at the time and subject to a child protection plan when he sustained injuries that were thought to be non accidental

Ted lived with his father and they moved from a neighbouring authority. Initially they were homeless and Ted had been on a Child in Need plan in the previous LA

Contextual factors included Ted’s significant emerging health needs, father’s history of mental and physical health issues, historical substance use issues and him being a care leaver from a previous LA

## Key Learning Points

Knowing and understanding the impact of parental vulnerabilities and histories on their parenting, including substance use, mental health and prescribed medication

Complexities when working with homeless families

Understanding a child’s likely and lived experiences, including the impact of absent parents

The need for effective transfer of information across local authority borders

Emotional support for parents of children with complex and lifelong conditions

Consider the needs of a parent as a care leaver

# How has the learning been shared across the Partnership?



---

**Multi-agency partners agreed the action plan and shared with the SILG for assurance**

---

**Practitioner events for reflection and putting into place changes to processes**

---

**Presentations and workshops to Designated Safeguarding Leads (education) conference, health colleagues and Children and Learning Practice Forum**

---

**Ongoing awareness, discussion and reflection in agency supervision**

---

**Presentation and assurance to the SILG 6 months following publication for assurance and identification of further learning**

## Thematic Learning Review

The Southampton Safeguarding Children's Partnership (SSCP) received six referrals around child sexual abuse for children who were looked after across 2022 and 2023.

A reflective session facilitated by the local authority Principal Social Worker, consisted of a range of practitioners who worked with the children across multiple agencies. There was opportunity to review each of the cases and reflect on what had happened, what the similarities were and identify learning that can be taken forward.

*Children who are looked after are amongst the most vulnerable in society. (CSACentre.org)*

### **The Findings for learning across the partnership**

Are practitioners relying on children to tell rather than asking?

Are practitioners afraid of interfering with evidence? – Yet we know majority of cases no prosecution.

Research tells us there is a tendency for children not to report CSA until they are well into adulthood so relying on them to tell us is not helpful.

Is there a sufficient trauma informed lens being adopted re behaviours?

Do practitioner have the confidence to think the unthinkable? – Could use reflecting teams to work through challenges.

One stop email address for 'health' to promote MA working.

All agencies focus on retention to encourage consistency of professionals involved.

Highlight importance of relational practice – developing relationships with children so they have the relationships where they may feel comfortable sharing.



# Recommendations from the Learning review

Ensure children and young people are seen outside of their placement.

Partnership session re strategy meetings and CERAFs and how to make them child focused and meaningful.

Children and Learning Services to offer of multi-agency reflecting teams for concerned/ stuck professional networks.

Children and Learning Services offer to partners re systemic practice sessions – develop understanding of systemic approach re familial histories and trauma.

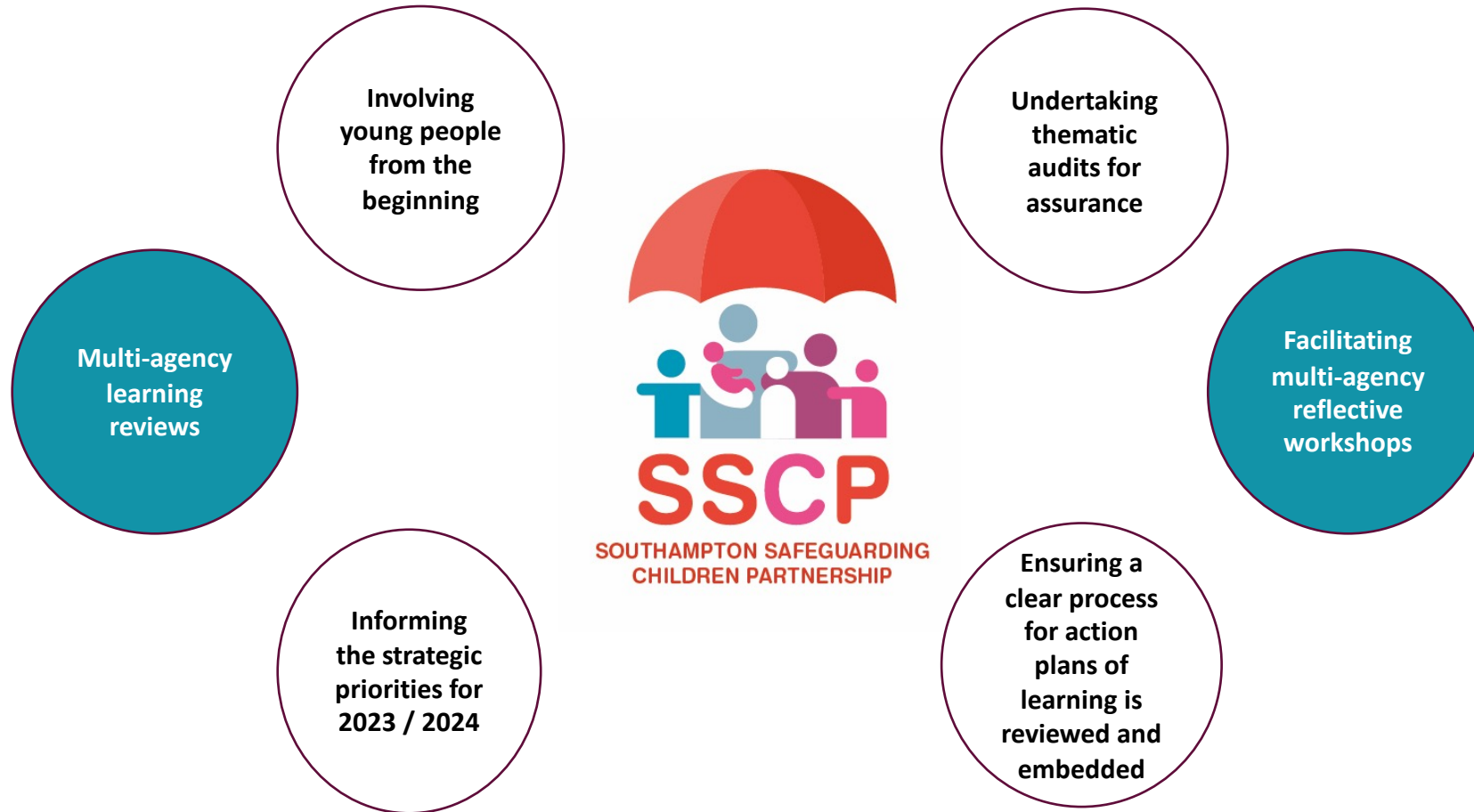
Communication across agencies.

Focus on placement stability.

SARC pathway – share knowledge of this across agencies.

Work is underway on each of these recommendations and assurance will be shared with the Partnership in the coming year through a series of audit activity and feedback

# What are we doing to gain the best learning for future practice across the Partnership?



# Workforce Development

The SSCP have facilitated a number of training programmes for the partner agencies based on the needs identified through reviews and practice issues. The impact of the training is a focus for the coming year and will be informed by the agreed strategic priorities for 2023 / 2024 with the newly formed Learning and Development Sub Group

- The role of the LADO
  - Clare's Law and Sarah's Law
  - Child Sexual Abuse in the Family Environment
  - Bruising Protocol
  - Fabricated and Induced Illness
  - Wider Childrens Workforce Mental Health training (with the Anna Freud Centre)
  - Medical Assessments in suspected Child Sexual Abuse
  - Neglect Toolkit Workshops
  - DASH DA Workforce
  - DA overview – workforce development
  - Intro to cyber choices
  - Drug and Alcohol Awareness
- HIPS wide training includes;
- Children who go missing from home or care
  - Child Exploitation – as a health professional what do you need to know?
  - Intro to CERAF
  - Learning from reviews – safeguarding children with complex health needs
  - Intro to child abuse linked to faith and belief
  - Intro to honour based abuse, forced marriage and dowry
  - Intro to breast ironing
  - Intro to Female Genital Mutilation

### SSCP strategic priorities for 2023 – 2026

Priorities agreed at the SSCP Development Day with data analysis informing what we know about the experiences of children and young people in Southampton in the context of audit activity, inspections, CSPRs, Rapid Reviews and evaluation.

These are in the context of the independent Child Safeguarding Practice Review Panel's report Child Protection in England – a national review in respect of Arthur LabinjoHughes and Star Hobson, the government's command paper, Stable Homes Built on Love, and the anticipated changes from an updated Working Together to Safeguard Children

- The impact of **neglect** and the embedding of the neglect strategy for all practitioners working with vulnerable children and their families
- Serious **Youth Violence** and **child exploitation**
- **Child Sexual Abuse** and the roll out of the CSA strategy and toolkit
- Children's participation in **education**
- A focus on the appropriate application of the **Pathways (Threshold) document** across partner agencies to ensure the right service is provided with the right children and families at the right time



## Thank you for reading this Yearly Report

If you have any questions or comments please contact  
[safeguarding.partnershipsteam@southampton.gov.uk](mailto:safeguarding.partnershipsteam@southampton.gov.uk)

