

Southampton Safeguarding Adults Partnership Annual Report

April 2023 – March 2024

Contents

This Annual Report captures the work of the SSAB for the period April 2023 – March 2024, which is a statutory requirement from The Care Act 2014, including learning from reviews and an analysis of how effective the arrangements have been in improving the outcomes for adults at risk in the city. The report looks at the information that helps us to understand what life may be like for residents of our city and examines the activity and impact of partners working together.

Introduction from the SSAB Chair	3
Structure and Governance of the SSAB	4
Who are we?	5
What do we do?	6
Strategic Ambitions 2024 – 2027	7
Southampton City Context	8
Adults at risk data	9
What have we found?	12
Quality Assurance Group	13
Learning and Development Group	14
Financial contributions	15
Messages from partner agencies	16
Self assessment responses	18
Looking forwards	19

Introduction from the Chair of the Southampton Safeguarding Adults Board

It is important that the Safeguarding Adults Board reflects upon the last year's work and makes that information available to the public.

This annual report provides data showing that the Board has continued to progress in its goal to keep adults safe and free from harm. You can read more about what's happened during the last twelve months to progress the Board's strategic objectives.

Two areas of work that are worth mentioning are:

- the completion and submission of the Safeguarding Adults Review which help us understand how to improve practice and share learning across the partnership and beyond
- the development of a new executive across children's safeguarding and adults safeguarding alongside community safety (Safe City Partnership) to help us continue on a path of improvement and understanding of how to safeguard those that require our intervention and support creating a whole system approach to lesson's learnt

The work of the Safeguarding Adults Review sub-group, which manages any case reviews that meet the criteria set out in the Care Act, based on the review findings, has worked hard to complete the legacy of reviews which had not been completed, ensuring family involvement where appropriate and strong focus on the experiences of the individuals concerned. The group has demonstrated strongly the desire to learn and improve practice across the multi-agency network in the city.

I began Chairing the Board at the end of 2023 after our independent Chair stood down and I too am sadly leaving Southampton but I do so confident in the knowledge that the Board has made considerable progress, that there's a strong commitment by all partners to our aims and knowing the Board will continue to work hard to protect adults in Southampton.

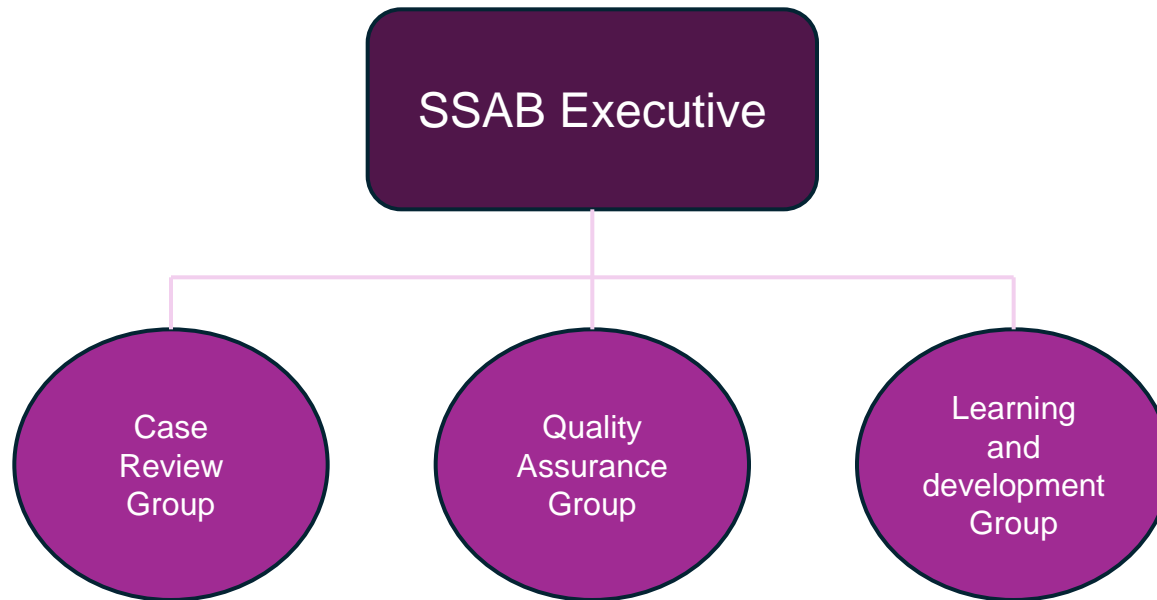
I very much appreciate the support that I've received from partner agencies during my time as Chair. I particularly want to thank the Board manager, Rebecca Holdsworth, who has done so much to organise the Board and its sub-groups, bringing new ideas to the fore, improving the quality of our work and promoting adult safeguarding across the City and Partnership.



Claire Edgar Chair of the SSAB and DASS

Structure and Governance of the Southampton Safeguarding Adults Board (SSAB)

The subgroups in Southampton are collaborative working groups which have membership from a range of statutory and non-statutory partner agencies in Southampton. The Case Review Group consider referrals for reviews where lessons could be identified to strengthen the safeguarding activity across the partnership for residents in the city. Once a review is finished, the group monitors the actions undertaken from the recommendations made to make sure that learning is shared and practice improvements are made. They work closely with the Quality Assurance Group to undertake audits for assurance and to analyse the data for patterns and trends that may emerge for further scrutiny. The Learning and Development Group work together to develop campaigns to promote learning across the city. The governance of the subgroup activity is through the Executive Group, where the 3 statutory partners – health, police and social care provide professional challenge and scrutiny.

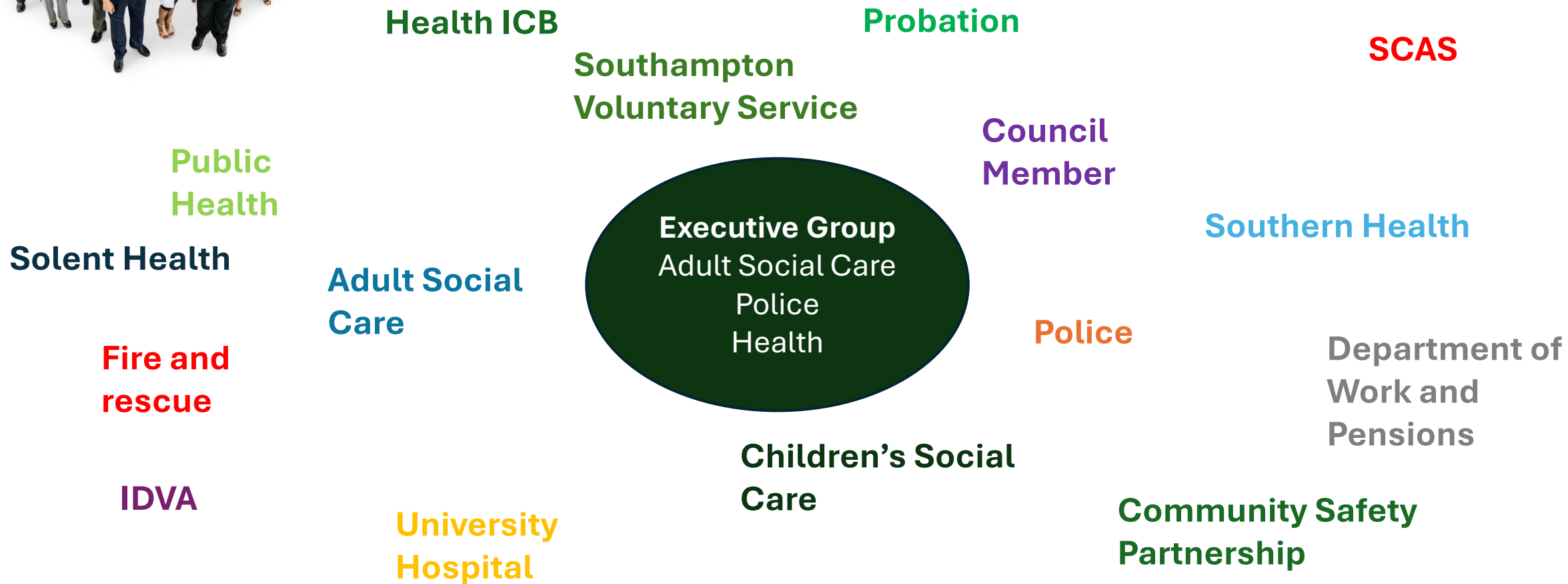


The Southampton Safeguarding Adults Board works closely with neighbouring areas where there can be collaboration of learning and the development of policies and procedures. Portsmouth, Hampshire, the Isle of Wight and Southampton work together as the 4 LSAB (Local Safeguarding Adults Boards). There are 4 subgroups where joint working focus on the following areas across the region.





Who are we? The Partnership Community



What do we do?

- As a community of practitioners, the SSAB has the **oversight and scrutiny** of safeguarding adults at risk across the city
- Gain assurance from partners that safeguarding **policies, practice and principles** are in place
- Promote **multi-agency** working and communication
- Undertake **Safeguarding Adult Reviews** if an adult with care and support needs has died or experienced serious abuse or neglect and there is reasonable cause for concern about how **agencies worked together** (S44 Care Act 2014)
- Publish an **Annual Report** and agree **Strategic Priorities**



Southampton Safeguarding Adults Board 2024 – 2027 Strategic Ambitions



		Strategic Ambition 1 Prevention and Engagement Partners will work together to develop procedures and services, ensuring that the views and experiences of those who use services help to inform how services are developed	Strategic Ambition 2 Quality and Learning The quality and impact of safeguarding arrangements are evaluated and learning is shared and embedded across the Partnership embedded	Strategic Ambition 3 Working in Partnership The Partnership will ensure that the structures work to enable effective collaboration and trust
1	<p>Stage One We will:</p> <p>Ensure the voices of Adults at risk of abuse and neglect are heard through individual and thematic reviews</p> <p>Raise the expectation of people being asked about the outcomes they want to achieve at the start of the safeguarding process and whether these are met</p>		<p>Review the data to understand the experiences of adults at risk of abuse and neglect in Southampton</p> <p>Analyse the quality of referrals and responses into Adult Social Care</p>	<p>Celebrate what we do well across the Partnership and learn from collaborative practice</p> <p>Align the work across the Adult and Children Partnerships, including CSP, recognising that the best outcomes for the residents of the city will come from collaborative working</p>
	<p>Stage Two We will:</p> <p>Explore the impact of campaigns to raise awareness around the application of MCA</p> <p>Embed the use of advocacy and feedback across the Partnership</p> <p>Ensure that community engagement is actively sought and prioritised through awareness raising campaigns across the Partnership</p>	<p>Undertake deep dive audits to inform what is working well across the Partnership and to identify gaps in services that would support more effective safeguarding of adults at risk of abuse or neglect to gain real life pictures</p> <p>Plan and implement a programme of audit activity informed by what the data and learning from reviews are telling the Partnership, including transitions between children and adult services, people who are unhoused, services for those with alcohol and drug use, MCA, unpaid carers and helpers and mental health and well-being</p> <p>Embed a learning culture from local and national reviews, case studies, feedback and organise a partnership wide learning event in the Autumn to promote relational networking and development of practice</p>	<p>Review the Training programme delivered across the Partnership to ensure this aligns with the strategic ambitions</p> <p>Promote the use of exemplars of good practice to support the delivery of excellent frontline practice across the Partnership</p> <p>Further align the work of Partnerships to include closer links with all Boards across the multi-agency Partnership to prevent duplication and to optimise efficiency</p>	
3	<p>Stage Three We will:</p> <p>Promote the cultural changes needed across the safeguarding Partnership to embed the principles of practice and Making Safeguarding Personal</p> <p>Empower the groups who work with us to enable genuine co-production</p> <p>The Partnerships will be driven by people's feedback, including those with experience of abuse and neglect, the voluntary sector and statutory services</p>	<p>Embed a culture of learning from audit and review activity with assurance from the Partnership and the community that changes are made to frontline practice</p> <p>Be confident that an effective training programme is embedded across the Partnership</p>	<p>The Partnership will evidence that the wider community in Southampton is able to demonstrate that they are confident in knowing 'What is Safeguarding'</p> <p>Ensure greater collaboration across the Partnerships to audit, respond to and support mental health and well-being in the City</p> <p>The Partnerships will be purposeful, meaningful and efficient</p>	





In 2023, the resident population of Southampton was estimated to be 264,957, an increase since 2022 from 263,769



In the 2021 census, 68.1% of the population identified as White British, 12.6% as White other and 10.6% as Asian / British Asian



Southampton has a young population, with 14.3% over 65, lower than the national average of 18.5%



1.13% of registered patients had a diagnosed severe mental illness which is higher than the national average of 0.94%



Southampton has been found to be 55 / 317 most deprived in England. There are links between severe mental illness and deprivation



In the 2021 census, 43.4% identified that they had no religion, 40.1% identified with the Christian faith, 5.6% Muslim, 1.7% Sikh, 1.3% Hindu and 0.7% as Other



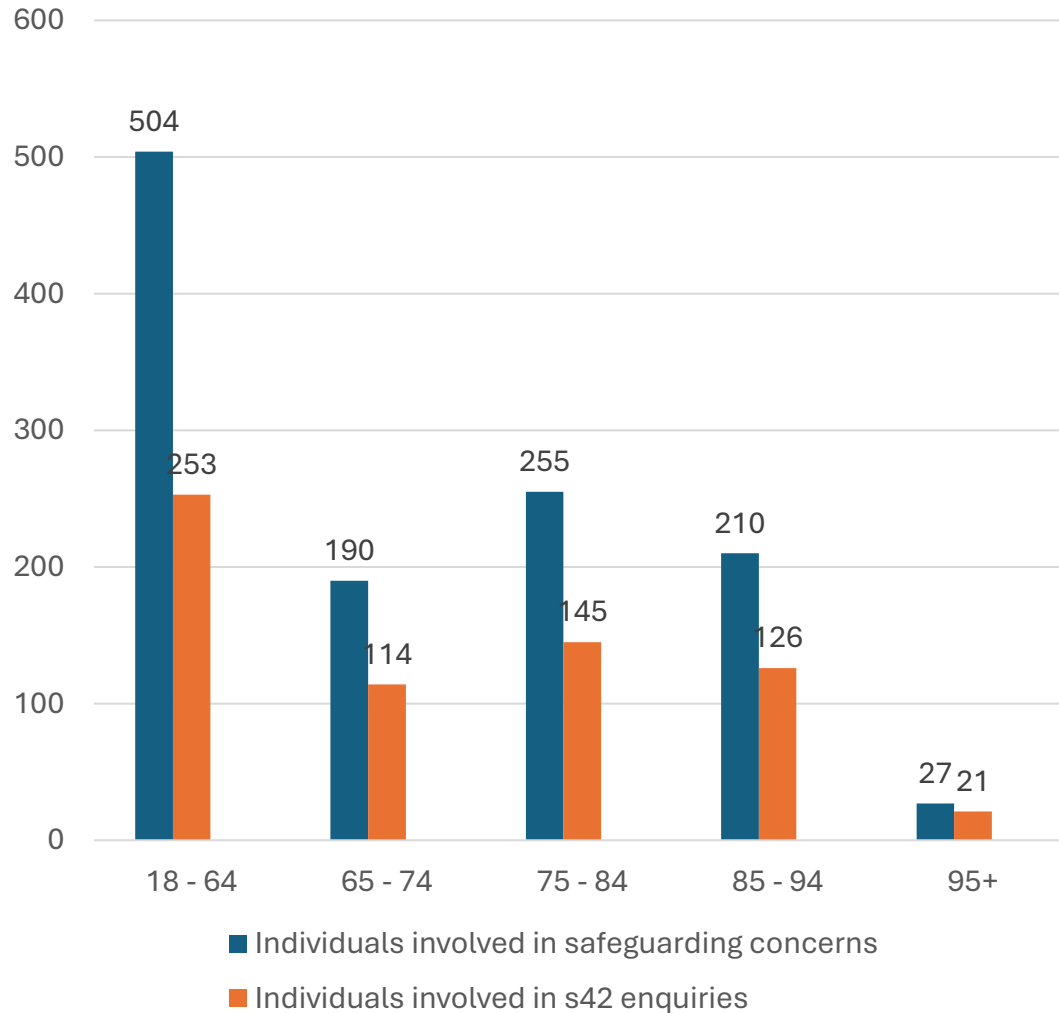
In 2020 / 21, Southampton had a 5 x higher rate of admissions episodes for mental and behaviour disorders related to alcohol than the national average



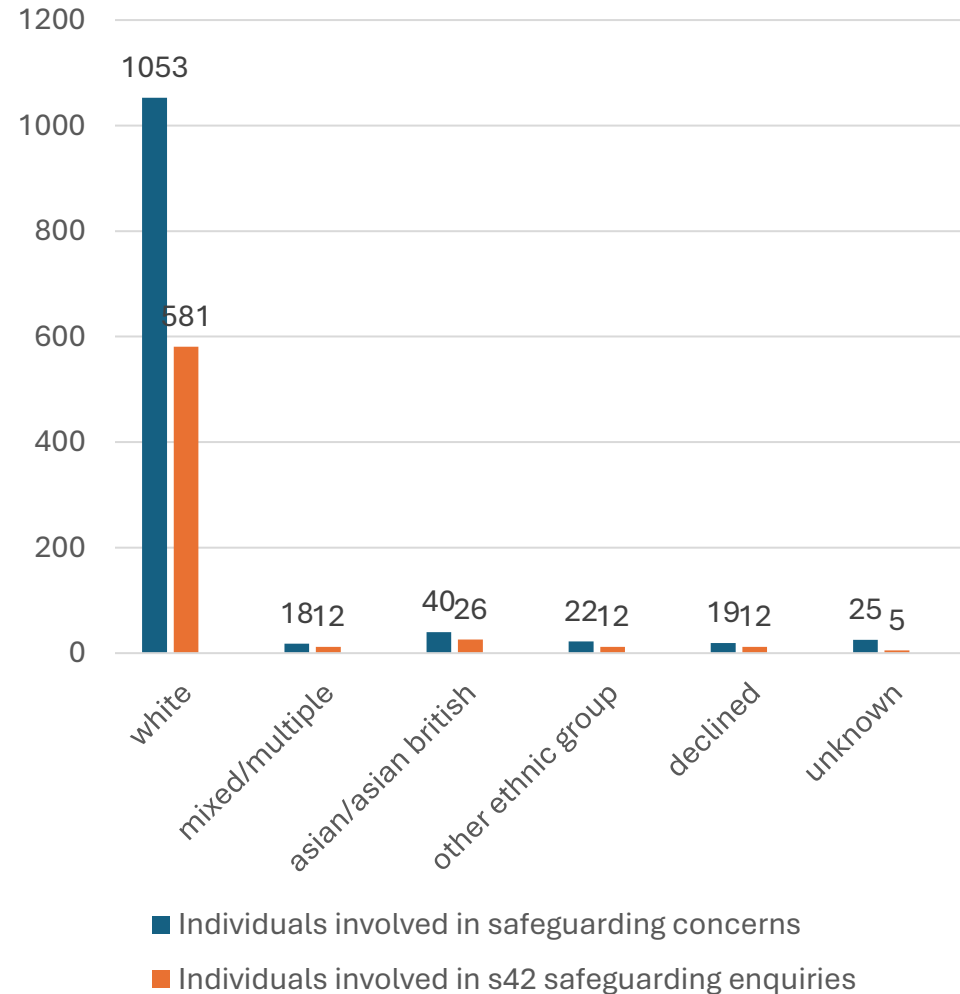
Between 2018 – 2020, Southampton had the 5th lowest life expectancy with 78.3 for males (79.6 nat.) and 82.5 for females (83.1 nat.)

Adults at risk data April 2023 – March 2024

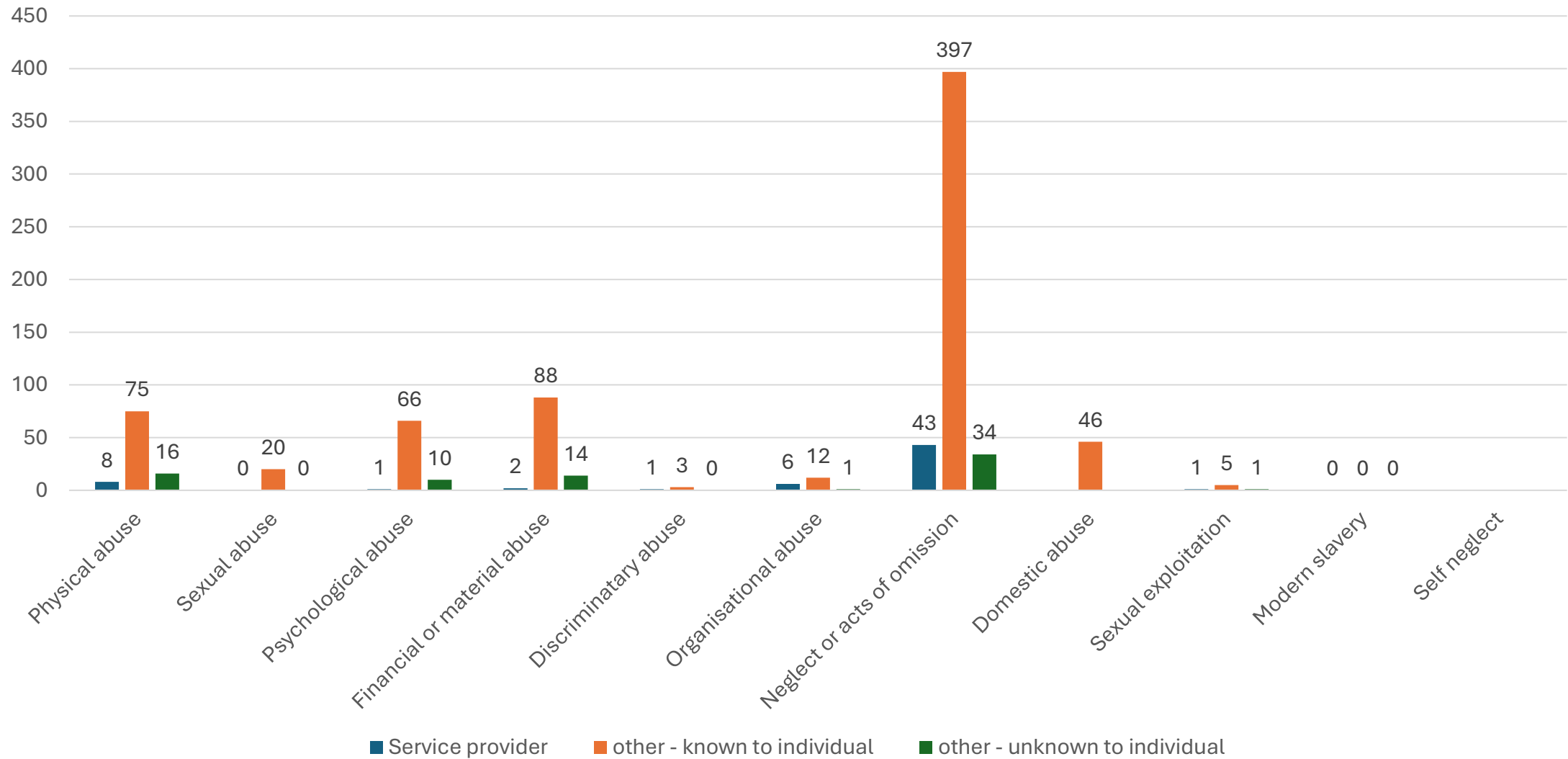
Individuals by age band



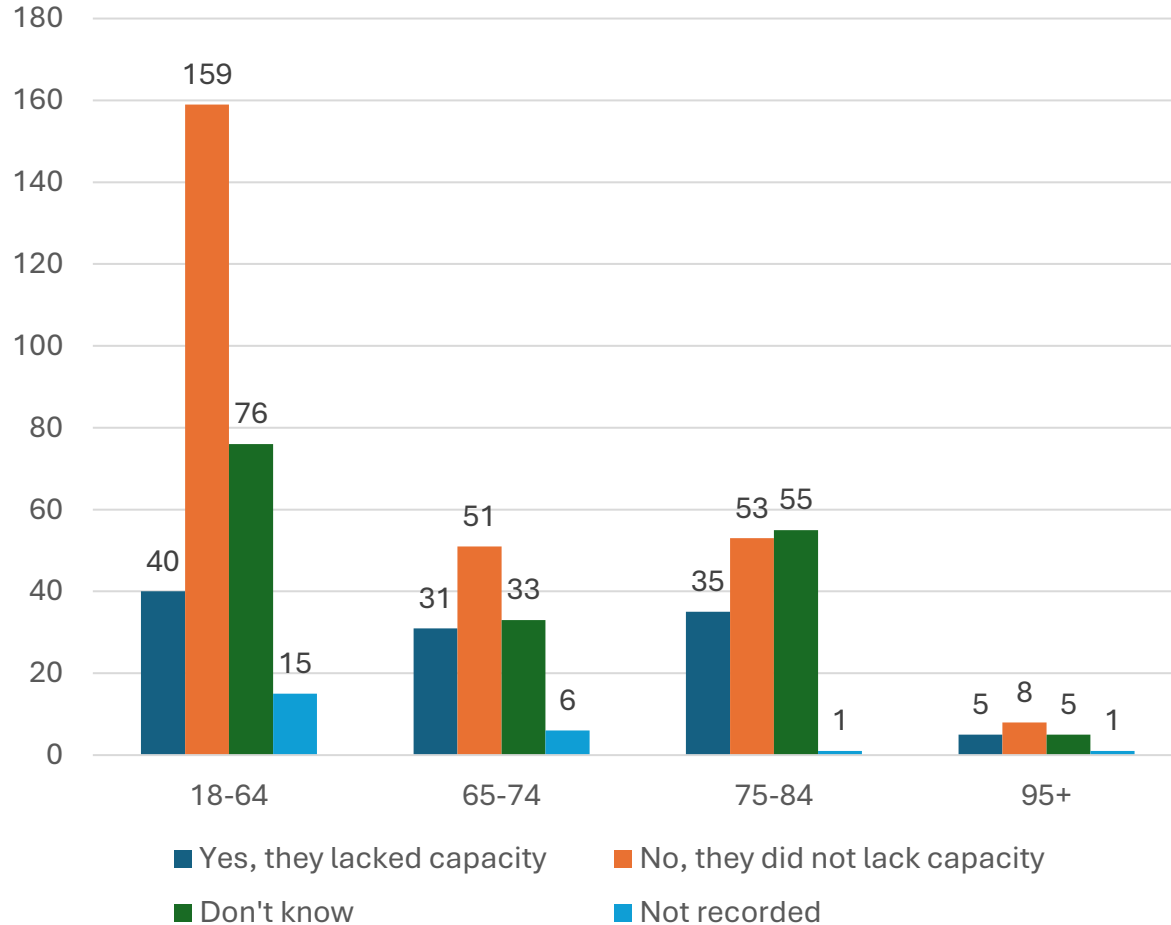
Individuals by ethnicity



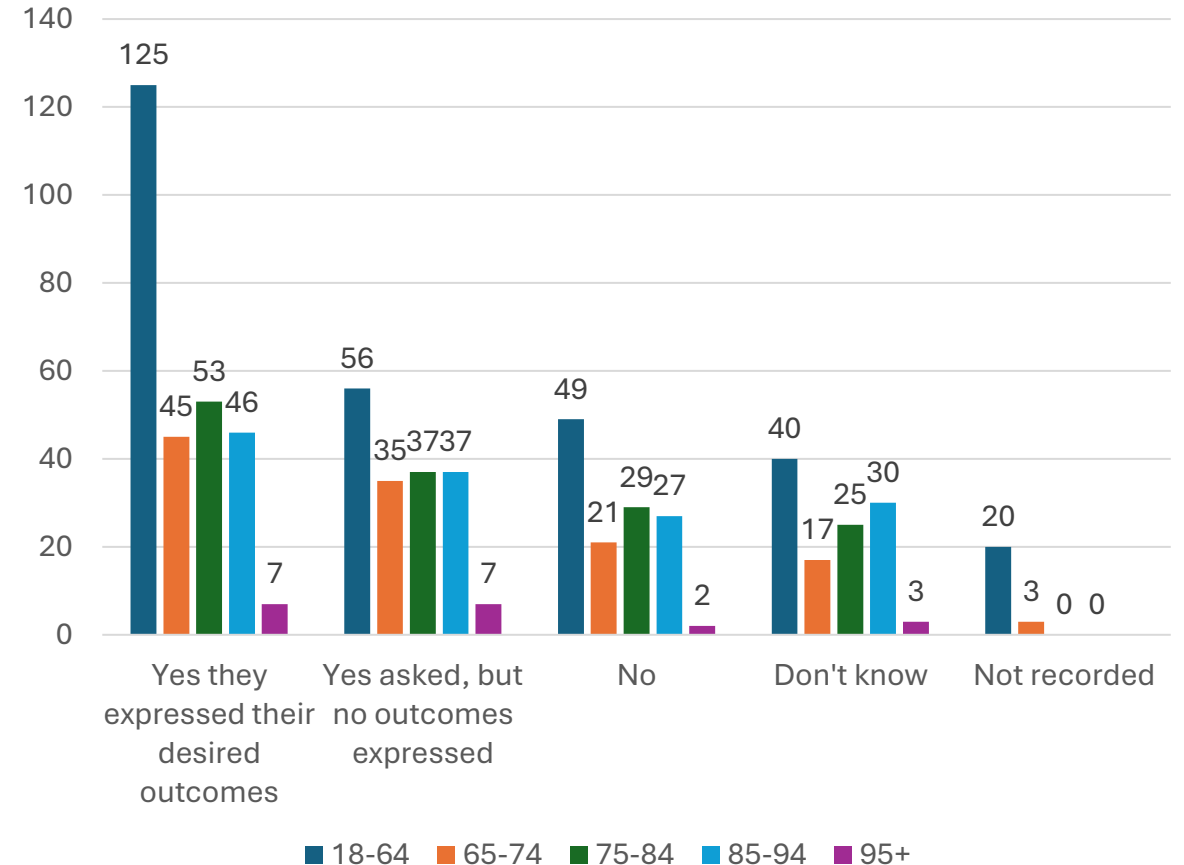
Concluded s42 enquiries and source of risk



Mental capacity for concluded s42 enquiries



Making Safeguarding Personal S42 enquiries



The Safeguarding Partners have been working hard to develop a data set which includes information from all organisations to truly understand the experiences for adults at risk in the city. This helps to identify patterns and trends and to inform key themes for further scrutiny and understanding, which in turn leads to focused events and training for the workforce across Southampton. The increased intelligence of information will be reported on in the annual report for 2024 – 2025 where this is further embedded in the work of the partnership.

What have we found?

Case Review Group (CRG)

Between April 2023 – March 2024;

20 referrals for
Safeguarding Adults
Reviews

2 progressed to SAR
(thematic)

6 Publications
Nicola, Penny, Olivia,
Diana, Clive&Richard,
Robert and Louise

4 to be published in
the next 2 months

Key Learning Themes

- Transitions and discharge planning – hospital / community, childhood / adulthood, involving family members in planning
- Making Safeguarding Personal
- The impact of protected characteristics
- Unconscious bias
- The use of interpreters
- Understanding MARM (multi-agency risk management) and S42 safeguarding activity
- Professional Curiosity
- Mental Capacity Act
- Dual diagnosis and EUPD (emotionally unstable personality disorder)
- The impact of trauma
- The impact of children being removed from parental care

Quality Assurance Group

Qualitative and quantitative analysis

Agencies are working at improving the data provided to identify patterns and trends across the partnership

MCA multi-agency audit workshop

Findings from the MCA audits

- Understanding of mental capacity and mental capacity assessments varies across agencies – it is ‘everyone’s business’
- The recording of rationale and assessments can be unclear or absent
- Multi-agency communication and networking needs to be strengthened
- Complexities arise with drug and alcohol use and mental capacity
- The use of family members for interpretation
- Training and supervision oversight can be difficult within some areas with high numbers of agency workers

Next multi-agency focus is – Making Safeguarding Personal

Learning and Development Group



Spot the Signs Campaign - financial abuse, discrimination, physical abuse, sexual abuse, emotional abuse, neglect, self-neglect, domestic abuse



Self-neglect Guides

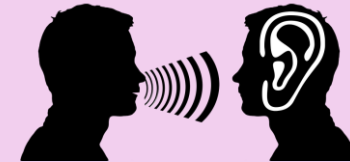


Policies and Procedures



Mental Capacity Act 2005 Toolkit

What's Next.....?
'Hear my Voice' Campaign –
Making Safeguarding Personal

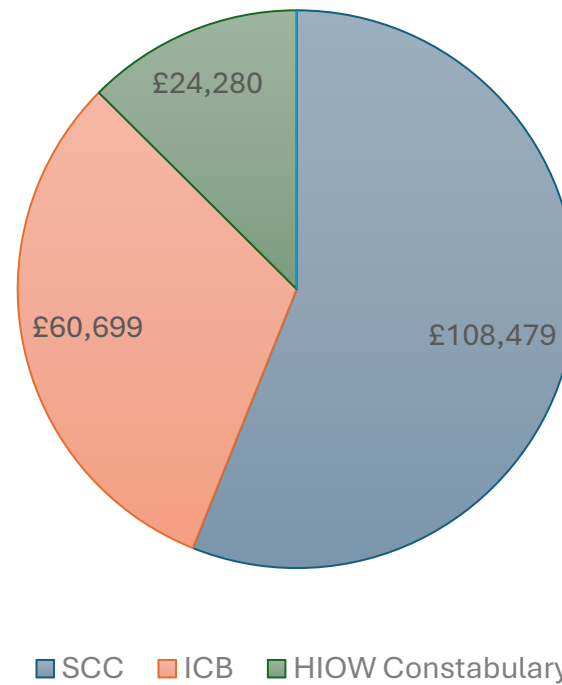


[Southampton Local Safeguarding Adults Board – Working together to improve the safety and wellbeing of Adults at risk of harm in Southampton \(southamptonlsab.org.uk\)](http://southamptonlsab.org.uk)

Financial contributions

The Southampton Safeguarding Adults Board is funded by contributions from Health, Police and Social Care. There continue to be discussions as to how the contributions can be more equitable to support the statutory requirements and responsibilities across all safeguarding partners in the city. The below shows the contributions for the financial year 2023 – 2024;

Partner Agency Contributions



Contributions from Partner Agencies

Integrated Care Board

Southampton Safeguarding Adults Board has seen a number of changes, including a change to the chairing arrangements for the Board and changes to the Executive membership for the Board. In addition, there have been notable changes to the leadership for Southampton City Council with a subsequent restructure for Adult Social Care.

We are aware that some of these changes will take time to become fully established at place.

The changes that have been made to streamline the Boards subgroups, to avoid duplication are positive. This has resulted in some of the sub groups being amalgamated. As a statutory partner the ICB attends the Boards sub groups and we believe the changes to the sub groups are a positive step forward in terms of working smarter and differently.

The Designated Nurse for Southampton place base, continues to support with the Chairing arrangements for the Board's Case Review Group. This remains a busy sub group with good attendance from partner agencies. The Decision making tool is now fully embedded and utilised at each meeting to help support good governance arrangements for the group. The membership of this group has now also been extended to Southampton IDVA's who attend to help ensure that the learning from SAR and DHRs are not looked at in silo.

Work remains on going to review how learning from reviews is monitored and reviewed including looking at how the Board can be assured that learning is subsequently embedded in practice.

There have been a large number of reviews completed and published over the last year by the Board. This has been a huge task for the Board to accomplish, where there have been a number of historic reviews awaiting publication.

Hampshire Fire and rescue

Key achievements / things that have gone well

Review of current practices to ensure alignment to new guidance developed by the National Fire Chiefs Council regarding:

- Levels of DBS checks for Fire Service Personnel and volunteers
- Safeguarding Allegations
- Training matrixes and requirements

Continued to chair the 4LSAB Fire Safety Development Group to ensure fire incidents resulting in serious injury and death are reviewed and learning is identified and shared across the partnership

Developed and published an emollient fire risk campaign for members of the public, in partnership with the ICB and South Central Community Pharmacy

Full compliance to the National Fire Standard for Safeguarding, with all criteria points rated as substantial

Continuing to review and develop our delivery of Safe and Well visits to ensure effective partnership working and risk mitigation to individuals and families

Developed and embedded quality assurance and evaluation activity for our Safe and Well visits

Reviewed and updated our training offer for partner agencies regarding fire risk and vulnerabilities

Challenges / Areas of Development for 2024/2025:

Continued focus on the initiation of MARM meetings

Plan to complete internal audit activity regarding the quality of safeguarding concerns reported by HIWFRS personnel – to identify areas of best practice and development areas for training.

Hampshire and Isle of Wight Constabulary

Project Foundation

Southampton Priority Crime Team, local neighbourhood teams and partners are committed to Operation Foundation focussed on the monitoring and management of Serial & Repeat perpetrators of Domestic Abuse.

The Project has provided clear supervision, close monitoring, and control over perpetrator behaviour, and is heavily focused on delivering interventions through Partners such as the Hampton Trust and the ADAPT programme. Where perpetrators are not willing to engage, and or, change their offending behaviour, they are subject to control measures to prevent further harm. Officers also ensure there is a robust safeguarding plan in place for victims. The project outcomes have seen increased referrals to the Hampton Trust; Right to Know, and Right to Ask (under Claire's Law), as well as earlier arrests for offences committed by perpetrators. The DASH Risk Indicator Checklist and bail conditions are also used to safeguard victims.

Operation Fortress has seen Southampton Neighbourhood Policing teams identify and support vulnerable adults who are at risk of being exploited and cuckoo'd by either local drug networks or County Line drug dealers. Engagement with vulnerable tenants is seen by police partners as vital and is supported both by safeguarding measures and sign posting - with a wide range of services such as: housing providers, Adult Social Care, Mental Health Services, Drug and Alcohol services. In cases where drug lines are resilient, execution of drug warrants, and partial and or full house closures, have taken place to prevent unwanted persons inside the address.

Operation Defender was launched to tackle these issues. Partners and police work closely, with a visible presence to safeguard vulnerable people and identify those who are a risk. Police are using a wide range of powers to prevent further harm, for example, section 34 Dispersal Authority; Community Protection Warnings; Notices in support of Anti-Social Behaviour and Injunctions - all alongside traditional policing activity. Operation Defender has been supported with significant funding through a Safer Streets Bid to bring about improvements in the local environment, to make the nighttime economy safer for all. Southampton district have now provided training to equip officers with additional skills to identify predatory sexual behaviour towards vulnerable persons specifically around the night time economy.

Operation Hem is a Southampton District management plan, focusing on an area where there are sex workers, almost exclusively' women, who have a complex combination of needs in relation to drug and alcohol addiction, housing, health, and mental health. It is the view of the police that these are some of our most vulnerable adults in the City. Safer Street Funding has also been achieved, providing additional facilities, such as CCTV to support greater safety in sex working. The work has built trust within this community, evidenced in increased reporting of serious violence and sexual offences, giving a more accurate picture of risk faced and the challenge for policing and our partners.

Self assessment responses

The Safeguarding Adult Boards undertake a self audit with partner agencies every 2 years to help them evaluate the effectiveness of internal safeguarding arrangements and to identify and prioritise any areas needing further development.

The 4LSAB (Southampton, Portsmouth, Hampshire and the Isle of Wight) received over 80 returns from organisations across the region, including;

ICB
Primary Care
Hampshire and IoW constabulary
NHS providers
Department of Work and Pensions
Children's Services

Advocacy providers
Housing (mix of local authority and independent)
Voluntary sector organisations
Education

Key themes;

Assurance provided;
Governance / Accountability
Allegations Management
Identifying and reporting concerns
Safer recruitment
Mechanisms to allow service users / relatives to raise concerns
Involving service users in safeguarding MARMs (multi agency risk management meetings)

Areas for development;
Staff supervision
Data collection
Organisational abuse
MARM and when to use it
Unpaid carers
Transitional safeguarding
Alcohol use
Mental Capacity Act application
Advocacy
Feedback from service users

Each safeguarding Adults Board has shared feedback to agencies and provided key themes for learning, with links to resources, targeted training provision and workshops in each area.

Looking forwards for the Southampton Safeguarding Adults Board

The Southampton Safeguarding Partnership will continue to enhance the existing strong relationships with partners to promote the wellbeing and safeguarding for adults, children, young people and families in the city.

The diverse demographics and rich culture of Southampton will be promoted and celebrated with co-design and co-production developed to shape and inform service delivery across the partnership.

There will be greater alignment between the Safeguarding Children, Safeguarding Adults and Safe City Partnership with the recognition that to make sustainable changes for adults, children and young people, the partnership need to consider the needs of all residents. This will promote a city which is vibrant and safe.

The partnership will continue to identify and oversee the implementation of learning from reviews and audit activity and gain assurance of the embedding of developments.

There will be a further focus on people experiencing homelessness, transitions into adulthood and the voices of residents of the city.

Thank you for reading the Southampton Safeguarding Adults Board Annual Report.

[Southampton Safeguarding Adults Board](#)

Safeguarding.partnershipsteam@Southampton.gov.uk