



GROW
PEOPLE

Southampton Jobs Bulletin

A snapshot of the latest job
and apprenticeship vacancies
in and around Southampton





Christmas Jobs

<p><u>Temporary Christmas Sales Associate - H.Samuel - Part Time</u> Signet Jewelers - Southampton, SO15 1QE</p>	<p><u>Seasonal Sales Assistant</u> Card Factory - Southampton, Hampshire, SO14 7NN</p>
<p><u>Sales Assistant (Seasonal) - Southampton - 5 hrs</u> HMV – Southampton, SO14 2BY</p>	<p><u>Seasonal Sales Advisor</u> The White Company</p>
<p>Christmas Bar and Kitchen Jobs at the Chilworth Arms Click here for details</p>	<p><u>Lead Sports Coach Holidays Camps Southampton</u> ActiveMe 360</p>
<p><u>Christmas Customer Advisor</u> Boots</p>	<p>Various Christmas Support Team jobs at Next Click here for details</p>
<p style="text-align: center;"><u>Seasonal Mail Sorters</u> Royal Mail</p>	

Join our Hope Street Team!



One Small Thing is growing! Join our ground-breaking team committed to redesigning the justice system for women and their children. Find out more about Hope Street: onesmallthing.org.uk/hopestreet

Community Partner

Hours of Work: Covering shifts between the times of 08:00 and 20:00, across 7 days – 1 weekend on, 1 weekend off. Weekly hours are 37 per week, however we will consider a 30 hour per week contract for the right candidate.

Salary: £27,000 - £30,000 FTE per annum

Location: Hope Street, The Avenue, Southampton

As a Community Partner, you will be part of a team setting out to deliver this innovative and exciting residential service for women and their children from Hampshire. You will support our residents, working with the women on a personal programme that addresses all their needs in terms of their skills development, health and wellbeing, and in relation to their Community Order.

You will also provide support to the women to manage any potential risks that they are exposed to and provide the one-to-one support they need in relation to any other aspect of their lives that they need help with. You will collaborate with the wider team to ensure that you are always up-to-date on the women's needs and progress, to ensure a consistent approach and network of support for each woman and child at Hope Street.

This post is restricted to women due to the nature of the role. The Occupational Requirement under Schedule 9 (part 1) of the Equality Act 2010 applies.

This post requires that you have a valid driving licence, access to a car and relevant insurance for business use; there may be occasions where you are required to support residents to attend appointments, in an emergency situation. You will also be required to attend local or county meetings or training.

We reserve the right to close this advert early if we receive a high volume of applications.

[Recruitment pack](#)
[Equity & diversity form](#)

Robert Rose Carpentry

Are looking to get into work?

We are a creative, supportive, and collaborative team.

We are looking for part-time workers to help assist in the process of furniture building and preparation.

This includes preparing the wood (sanding, staining, cutting to size) and preparing the frames (cutting tubes, polishing them, assembling the frames).

This role would be suitable for people looking to get into work.

Our work environment includes:

- On-the-job training
- Safe work environment
- Relaxed atmosphere
- Flexible work shifts

If you would like to join our small, friendly team of makers then please send us an email with your C.V to info@robertrosecarpentry.com to discuss in more detail.

This may lead to a permanent position/apprenticeship in carpentry.

Work location is at SO30 2PA

We are looking for hard working individuals with the right attitude who can who be trusted to work alone as well as in a team (self-motivated & reliable).

We may be able to offer lift share options for you depending on your location, otherwise you will need to make your own way in.

We look forward to hearing from you.



In this video, Robert Rose Carpentry talk about how they work with the Employment Support Team

Southampton Football Club



To see our current vacancies please [click here](#).

Hospitality Sales Executive	Skilled Grounds Operative
Kitchen Assistant	Chef de partie - The Dell
Safety & Security Officer	Front of House Team - The Dell
Sous chef - The Dell	Saints Foundation Finance & Administration Assistant
Casual Football & Sports Development Coach	Casual Youth Engagement Coach (Premier League Kicks)
Casual Safety Steward	Saints Foundation Casual Disability Coach
Casual SO14 Active Coach	Casual Groundstaff

Southampton Football Club's catering and events partner, Gather & Gather, are passionate about great food and putting their employees and customers at the heart of everything that they do. Gather & Gather are looking for enthusiastic and passionate people to join them as they continue to bring food and people together.

If you are interested in working on a casual basis for our Catering and Events team, please email Gather & Gather at sfc.people@gatherandgather.com

Ordnance Survey

We enable smarter solutions to the world's most complex problems – turning location data into real world benefits.



www.ordnancesurvey.co.uk/careers

Financial Planning Accountant	Financial Planning & Analysis Manager
Support Engineer	

Red Funnel

Visit the [Red Funnel website](#) to apply.



- [Project Manager](#)
- [Senior Chief Engineer - Hi-Speed](#)
- [Engineer Officer](#)
- [Fleet On Board Services Officer](#)
- [Hi-Speed Cabin Attendant](#)
- [Mate - Hi Speed](#)
- [Talent Attraction and Development Specialist \(MAT leave cover\)](#)
- [Customer Advisor](#)

Go! Southampton Jobs Board

www.gosouthampton.co.uk/jobs



<p>Stylist & Key Holder Positions – Accessorize Find out more</p>	<p>Leonardo Royal Hotel- Various Find out more</p>
<p>Barista- Costa Coffee Find out more</p>	<p>Connells Group – Various Roles [Trainee Estate Agent, Lettings Negotiator, Senior Lettings Negotiator] Find out more</p>
<p>Travel Consultant – Hays Travel Find out more</p>	<p>General Assistant – Showcase Cinema Find out more</p>
<p>D Young & CO- Technical Assistant (electronics, engineering, physics, computer science) Find out more</p>	<p>Travel Consultant – Barrhead Travel Find out more</p>
<p>Retail Assistant Part time and Weekends- Primark Find out more</p>	<p>Martin’s Rubber – Various Roles Find out more</p>
<p>Mango Thai- Various Hospitality Find out more</p>	<p>PureGym- Various Find out more</p>

Latest Job Vacancies

Southampton Airport

www.southamptonairport.com/contact-us/airport-jobs



IKEA

Make millions of people look forward to going home.

en-jobs.about.ikea.com



Oyster Yachts

careers.oysteryachts.com/jobs/Careers



- [After Sales & Events Coordinator](#)
- [Project Manager](#)

Paris Smith

We are one of the largest regional full-service law firms in central southern England. We have over 50 partners and employ nearly 250 staff.



parissmith.co.uk/careers

[Training Contracts & Vacation Placements](#)

[Legal & Professional Roles](#)

[Business Support Roles](#)

South Western Railway

careers.firstgroup.co.uk/brand-swr



[Engagement Manager](#)

[Customer Ambassador CO3](#)

Solent Mind

View and apply for vacancies at Solent Mind at:

www.solentmind.org.uk/work-with-us/current-vacancies/



- Corporate Partnership Lead (Fundraising and External Engagement)
- Trainee Psychological Wellbeing Practitioner
- Qualified Psychological Wellbeing Practitioner

Quilter



Our people come from all kinds of backgrounds, and have a wide range of expertise, but we are united by our commitment to go the extra mile for customers.

careers.quilter.com

PMO Specialist	Environments and Release Specialist
Customer Service Technician	Business Analyst
Digital Proposition Specialist	Health and Safety Adviser
Complaints Administrator	Training & Development Consultant

Carnival UK



CARNIVAL UK

Land-based jobs

jobs.carnivalcorp.com

Accounts Receivable Collections Coordinator 6 month FTC	Executive Assistant
Executive Secretariat	Princess Cruises Senior Personal Cruise Advisors
International Reservations Concierge (Dutch Speaking)	German Speaking Collections Advisor

Ship-based jobs

www.jobtrain.co.uk/Carnival

Carnival UK - Musician	Carnival UK - Deck Cadetships BSC, FD & HND -September 2025
Carnival UK - Electro-Technical Cadetship FD BEng & HND -September 2025	Carnival UK - Engineer Cadetships FD BEng & HND - September 2025
Carnival UK - Engineer Graduate Cadetship	P&O Cruises Entertainment Host

Change Grow Live



www.changegrowlive.org/careers-volunteering/careers

Recovery Coordinator

Type of Contract: Permanent employee

Contracted Hours Per Week: 37.50

Closing date: 04/11/2024

Salary Range (pro rata if part time): CGL points 23 to 28 (£27,449.52 - £31,529.41)

Society of St James



ssj.org.uk/jobs/

- [Substance Misuse Administration and Engagement Worker - Portsmouth](#)
- [Team Leader - Farnborough](#)
- [Recovery Housing Support Worker \(Substance Misuse\) - Portsmouth](#)
- [Care and Support Worker - Southampton](#)

Mayflower Theatre



www.mayflower.org.uk/about-us/careers

Youth Theatre Coordinator (Maternity Cover)

We are looking for an enthusiastic, creative and organised individual to join our Engage team as a Youth Theatre Coordinator. You will facilitate musical theatre sessions with ages 7 – 18, as well as support on our drama strand and coordinate our Youth Production Arts group, as well as supporting the wider participation department.

[Job Description](#)
[Job Ad](#)

[Apply online](#)

Caribbean Dance Facilitator

MAST Mayflower Studios are looking for a local Caribbean dance instructor to join us for our new regular dance classes!

MAST are delighted to be working closely with local community groups such as the Priory Road Lunch Club, Black Heritage Association Southampton and New Testament Church of God Southampton to create a new weekly offer for adults aged 18+.

[Job Description](#)

Latest Job Vacancies

Banks

 search.jobs.barclays	<p>The co-operative bank Ethical then, now and always</p> <p>CO- operativebankjobs.co.uk</p>	 Jobs at Halifax
 mycareer.hsbc.com	 Leeds Building Society Jobs at Leeds Building Society	 Jobs at Lloyds Banking Group
 Jobs at Metro Bank	 nationwide nationwide-jobs.co.uk	 NatWest jobs.natwestgroup.com
 Jobs at Santander	 Starling Bank starlingbank.com/careers	 YORKSHIRE BUILDING SOCIETY ybscareers.co.uk

Utilita

Our culture is all about making a positive difference to our customers while nurturing and developing our staff.



utilita.co.uk/careers

Catering Assistant	Retail Assistant (Part Time)	Customer Service Advisor
Graphic Designer	Service Desk Analyst	Customer Care Agent

Latest Job Vacancies

Snows

This is a sample of our current open jobs. For more info, or to apply, please visit the Careers page on our website: snows.ciphr-irecruit.com/Applicants



Senior Service Advisor - Peugeot	Sales Executive - Polestar (Fixed Term Contract)	Sales Executive - Volvo	Bodyshop Development Executive
Parts Advisor - Peugeot	Sales Executive - SEAT & Cupra	Sales Executive - Peugeot	Sales Executive - BYD and Used Car Centre
Service Technician and MOT Tester - Volvo	Sales Executive - Polestar	Apprentice Technician	Diagnostic Technician
Service Technician and MOT Tester	Service Technician and MOT Tester	Service Technician and MOT Tester - SEAT	Customer Delivery and Handover Specialist - Polestar (Casual hours)

Garmin

www.garmin.com/en-GB/careers

GARMIN®

If you wish to apply for any of our open vacancies, please send a covering letter and copy of your CV to careers.ge@garmin.com. Please include what job it is you are applying for, along with your salary requirements.

- Emerging Markets Administrator
- Part Time Retail Store Associate
- Lead Time Analyst – Order Management
- Design Team Lead
- PR Specialist
- Marketing Specialist (Maternity Cover)
- Social Media Specialist
- PR Manager

Jobs at the Port of Southampton



careers.abports.co.uk

Hydrographic Surveyor	Consents & Environment Specialist
Business Administrator	Graduate - Procurement
Graduate - Port Operations (Southampton)	



www.dpworld.com/southampton/careers

At DP World Southampton we provide our customers with fast, reliable and secure services to move containers through the strategically located port of Southampton.

Port Security Officer

Job Overview

- Port Security Officer, £12.16 and hour
- 4 days, 4 off, 4 Nights, 4 off. 12 hour shifts.

Main Duties

- Maintaining our Port Gatehouses, maintaining the access and egress of the ABP Ports.
- Collating and checking documentation.
- Mobile work also required.

careers.mitie.com/jobs/vacancy/port-security-officer-63993/64012

We have a wide range of opportunities for anyone that is looking for flexible work.

Email recruitment@pathfinderpersonnel.com or call
02380 429767

Visit www.pathfinderpersonnel.com for more information



Simple Recruitment Services

To find out more and apply please call 023 80331743 or visit www.simplers.co.uk/jobs

- Forklift Operator
- Parcel Sorters
- Recycling Picker
- Refuse Loader
- Picker and Packers
- Cleaners
- HGV Drivers
- Street Cleansing Operatives

Carbon60



Project engineering and technical recruitment specialists

We're dedicated to people and the difference we make in our industry.

www.carbon60global.com



Contact our Southampton office today for help with a career change

Accountancy & Finance

02382 020 104

Construction & Property

02382 020 100

Education

02382 020 102

Human Resources

02382 020 107

Marketing

02382 020 106

Office Support

02382 020 105

Procurement & Supply Chain

02382 020 106

Social Care

02382 020 103

Legal and Insurance & Financial Services

02382 020 111

www.hays.co.uk/local-jobs/southampton

Faststream Recruitment Group

Search and apply for Maritime jobs, Shipping jobs & Energy jobs

www.faststream.com/jobs/hampshire-1



RLM Jobs

Specialists in recruitment, training and transport services

rlmjobs.com/jobs



[Site Installation Engineer – IPAF qualified – £28000-£32000 per year](#)

Industrial
Southampton

Our client, a friendly, family run business now requires the following. Site Installation Engineer preferably with the following:- CSCS Card IPAF (Cherry Picker) Qualification

[Read More](#)

[HGV2 Flatbed delivery driver – £14.50-£21.75 per hour](#)

Driving
Southampton

Are you looking for a permanent HGV2 Driving position? Are you able to work 0700-1600 and be available to work overtime as and when...

[Read More](#)

[Public Toilets Cleaner – £11.80 per hour](#)

Industrial
Southampton

We are now urgently looking for a Toilet Attendant to service public conveniences around Lymington and surrounding areas. A Driving License is required to...

[Read More](#)

[Waste Collection Operative/Van Driver – £11.80 per hour](#)

Driving
Southampton

We are now urgently looking for a Waste Collection Operative to undertake duties such as public bin emptying, household waste clearances and litter picking

[Read More](#)

Find a Job Vacancies

<p><u>Control Room Assistant</u> Mitie - SO15 1QF</p>	<p><u>Care Assistant</u> MHA - Southampton, Hampshire, SO15 5WE £13.23 to £13.23 per hour</p>
<p><u>Caseworker</u> Victim Support - Hampshire, SO15 1AN £26,010 to £26,010 per year</p>	<p><u>Outreach Support Worker</u> Two Saints Ltd - Southampton, Hampshire £23,775 to £25,027 per year</p>
<p><u>Grounds Maintenance Operative</u> Mitie - SO14 7LP</p>	<p><u>Damp Proofing and Timber Technician</u> Don Hobbs Preservation Ltd - Southampton</p>
<p><u>Waste Operative</u> NHS Jobs - Southampton, SO16 5YA £23,615.00 to £23,615.00 per year</p>	<p><u>Purchase Ledger Clerk</u> CMA Recruitment Group - SO14 0AA £13 to £13 per hour</p>
<p><u>Maternity Support Worker</u> NHS Jobs - Southampton, SO14 2AA £24,071.00 to £25,674.00 per year</p>	<p><u>Data Entry</u> Brook Street - Southampton, Hampshire, SO16 0BT £12.50 to £13.50 per hour</p>
<p><u>Newly Qualified Nurse – Register Your Interest</u> University Hospital Southampton NHS FT - Southampton, SO16 6YD £29,970 pa pro rata</p>	<p><u>Customer Service Administrator</u> Millbrook Group Ltd - Southampton £12,224.05</p>
<p><u>Night Porter</u> Leonardo Hotels - SO14 0TB</p>	<p><u>Level 3 Qualified Nursery Practitioner</u> NHS Jobs - Southampton, SO16 6YD</p>
<p><u>Prisoner Custody Officer</u> Serco Limited - Hampshire, SO15 2XQ £22502-22502 per annum</p>	<p><u>Postperson with Driving - Bitterne Manor Delivery Office (SO18 1QN)</u> Royal Mail - SOUTHAMPTON, SO18 1QN £26164-26164 per annum</p>
<p><u>Housing Support Worker</u> Nacro - SO14 7LW £24,962 to £24,962 per year</p>	<p><u>Residential Support Worker</u> Budwood - Southampton, Hampshire, SO17 2HW £30,804.04 to £33,309.54 per year</p>
<p><u>Assistant Practitioner - Level 2 or Unqualified</u> Hopscotch Day Nurseries - Portswood Nursery, SO17 1DP £17,888.00 to £24,107.20 per year</p>	<p><u>Sheltered Almshouse Warden - Temp to Perm</u> Thorner's Homes CIO (Charity No. 1189291) - Southampton, Hampshire £26,000 to £26,000 per year</p>

View more vacancies at findajob.dwp.gov.uk

Retail and Customer Service

Many well-known shops and supermarkets have their own dedicated careers pages.
Here are the links to these pages:

 www.tesco-careers.com	 sainsburys.jobs	 www.asda.jobs
 jobs.coop.co.uk	 www.morrisons.jobs	 icelandcareers.co.uk
 www.aldirecruitment.co.uk	 careers.lidl.co.uk	 jobs.marksandspencer
 careers.bmstores.co.uk	 therange.co.uk/careers	 www.bandqcareers.com
 www.jlpjobs.com	 poundlandcareers.co.uk	 en-jobs.about.ikea.com
 careers.primark.com	 www.jdplc.com/careers	 www.boots.jobs

[Glamour Forever](#)

Beautician

[Read More...](#)



[UK Shaolin Temple](#)

Centre Manager

[Read More...](#)



[Cleaning Vacancies](#)

Part-time hours: 16 per week Salary: £11.44 per hour

[Read More...](#)

Corpor@te Facilities Services Ltd



Cleaning, Security & Support Services

[Christmas Sales Advisor](#)

Part Time

[Read More...](#)



www.marlandsshoppingcentre.co.uk/Jobs

Hospitality, Restaurants & Fast Food

 people.mcdonalds.co.uk	 www.kfc.co.uk/careers	 careers.burgerking.co.uk
 careersatpizzahut.co.uk	 dominosrecruitment.co.uk	 papajohns.co.uk/careers
 www.subway.com/en-gb/careers	 www.greggsfamily.co.uk	 careers.nandos.co.uk
 www.costacareers.co.uk	 starbucksemeacareers.com	 coffee1.co.uk/careers
 jobs.tacobell.com	 Roosters Piri Piri	 Careers at Fridays
 www.pretjobs.co.uk	 pizzaexpress.com/careers	 caffenero.com/uk/careers

Hotel Jobs

 jobs.hilton.com/emea/en	 careers.ihg.com/en/our-brands/holiday-inn/	 Opportunities with Ibis Careers at Accor
 careers.jurysinns.com	 careers.jurysinns.com	 room2.com/careers
 harbourhotels.co.uk/careers	 jobs.thepighotel.com	 www.town-or-country.co.uk/team-1
 travelodge.co.uk/careers	 Premier Inn Whitbread Careers	 Opportunities with Novotel Careers at Accor
 Chilworth Manor Hotel Jobs	 Moxy Hotel Jobs	 pebblehotels.com/work-with-us/

View more jobs on the Southampton Hoteliers Association website:
<https://www.southamptonhoteliersassociation.co.uk/job-vacancies/>

Bus Driver Vacancies

Drive for Bluestar! And join our friendly, supportive team



We pay our drivers a training rate of £13ph, rising to £15ph once fully trained. Overtime is paid at £18.75ph. If you want to join a supportive team and can deliver great customer service this could be just the job for you. Local knowledge of the area would be an advantage. We have **full time** and **part time** vacancies for **non-licence holders**, as **full training will be given**.

We're looking for individuals who:

- like working with people
- are friendly and happy to smile
- have a car driving licence with UK driving experience
- have the flexibility to work shifts

Why choose us?

- We have a friendly nurturing training team, who are here to support you through your learning journey
- Free bus travel on all Go South Coast services for you and a nominee of your choice. Up to two of your own children travelling with you can also go free!
- PCV licence is not essential as we can teach you how to drive
- Stable, long term employment at a competitive rate of pay
- Your fully paid whilst being trained
- Progression as you gain experience in addition to providing inflationary pay rises
- A career where every day is different; plus you will become part of the Bluestar family and gain friends for life!
- We get discounts and perks at shops including major supermarkets, clothing stores, cinemas, health clubs and many more making your wages go that little bit further
- Professional uniform provided
- Excellent holiday entitlement with some flexible working available
- Common start and finish point for your day's work

[Trainee bus driver information & application](#)

[Experienced bus driver information & application](#)

Shunter/Cleaner - Southampton Depot



Location: 283 Empress Road, Southampton, Hampshire, SO14 0JW

A shunter/cleaner position has become available at our Southampton Empress Road Depot.

This position is 40 hours per week 6pm - 2am, working on a rolling shift pattern that covers Monday to Sunday.

General duties will include fuelling, parking and cleaning vehicles. Ideally, applicants will have prior cleaning experience. A driver's licence is essential and whilst a PCV licence is not a necessity for this role, it is desirable.

The rate of pay is £13.12/hour but if you have a full PCV licence it will be £14.98/hour. You will be entitled to 20 days + 8 bank holidays worth of annual leave which increases to 25 + 8 after two years.

Bluestar offer a host of benefits, including free travel for you, plus one nominee, on all Go Ahead transport services, excluding London. We also have many high street store and online discounts with major retailers.

If you have the required skills and the ambition to join one of Go-Aheads leading brands, please send a letter of application to: michael.bendell@bluestarbus.co.uk

<https://www.bluestarbus.co.uk/shuntercleaner-southampton-depot>

Skilled PCV Fitter – Bluestar



Location: Bluestar Totton Depot, 200 Salisbury Road, Totton, Hampshire, SO403PE

A position has arisen for a full-time Skilled PCV fitter at our Totton Depot on Salisbury Road.

Responsibilities include regular maintenance, repair and inspection of buses, and ancillary vehicles for Bluestar. Reporting to the Workshop supervisor and ultimately to the Engineering Manager, you will be part of a team of highly motivated Engineers.

The shift pattern will be rolling weeks of earlies and lates, Monday to Friday, alternating between 4:00am to 12:00pm and 1:00pm to 9:00pm week to week.

Whilst a PCV licence is not a necessity for this role it is desirable.

Rate of pay is £20.40/hr. You will be entitled to 20 days + 8 bank holidays worth of annual leave which increases to 25 + 8 after two years.

Bluestar offer a host of benefits, including free travel for you, plus one nominee, on all Go Ahead transport services, excluding London. We also have many high street store and online discounts with major retailers.

If you have the required skills and the ambition to join one of Go-Aheads leading brands, please send a letter of application to: michael.bendell@bluestarbus.co.uk

www.bluestarbus.co.uk/skilled-pcv-fitter-totton

Emergency Services Jobs

Hampshire Constabulary

Police Officer, Police Staff and Support roles with the police



Search and apply for the latest jobs at Hampshire Constabulary at: careers.newjob.org.uk/HC/go/All-Hampshire-Constabulary-Jobs/3196101/

Hampshire and Isle of Wight Fire and Rescue Service

Firefighters, Community roles, IT, Administration and Support



Search and apply for the latest jobs at Hampshire & Isle of Wight Fire & Rescue Service at: careers.newjob.org.uk/HFRS/go/All-Hampshire-Fire-and-Rescue-Service-Jobs/1428701/

South Central Ambulance Service

There are many exciting and dynamic roles available at SCAS including clinical frontline, coordination centre and back office support.



Search and apply for the latest jobs at South Central Ambulance Service at: scasjobs.co.uk

HM Coastguard

You could be dispatching search and rescue teams, providing essential training or developing how we communicate with people on the water.



Find at more about careers with HM Coastguard at: hmcoastguard.uk/careers

NHS Jobs and Apprenticeships

www.jobs.nhs.uk/candidate



Working in Care

Start your Career in Care

We are looking for carers to support local people in Southampton in their homes.

There are many great reasons to work in adult social care, which includes job security, flexible working patterns around you and your personal interests or family life and an enormous sense of personal achievement from knowing you are helping other local people.

Typical responsibilities for a home carer include helping individuals to achieve their reablement plans/goals, meal preparation and support, medication support, personal care such as dressing bathing and toileting, and offering companionship and a link to the outside world.

If you're interested in making a genuine difference to people's lives, then this is the career for you. Apply here - www.southampton.gov.uk/workincare



Sunnylives Support

Domiciliary Health Care Assistants Needed

Come join our fantastic team of carers.

Whether you are a seasoned carer or new to the vocation, we want to hear from you.

What does the Job entail, you ask?

Domiciliary Care is meeting people aged 16 - 106 in their own homes; it's empowering their independence to stay at home in familiar surroundings and allowing them to take charge of their lives with support.

Every day is varied, and no two visits to the same person are the same.

Some people want companionship, some need a shoulder to cry on, some need help cooking a meal, and some want more. Personal care. Whatever it is, you could make so much of a difference in their and their families' lives; knowing their loved ones are safe and happy means a lot.

You can choose part-time or full-time hours. We want to ask you for some availability at weekends as for these vulnerable people; every day is a day they need help.

Pay rates vary from £10.80 - £13.50 depending on shift allowance, and we pay the top rate of 45p per mile.

We pay holiday pay in line with the government guidelines.

We are well established in the local area, with an excellent reputation.

To be successful, you will need a full, clean driving license and a car or vehicle to move between clients. However, we do have some small walking rounds if you live in the right area for these.

Please call Sue on 02380199919 option 1 for more details.

Or visit our website, www.sunnylivessupport.co.uk



Sunnylives Support Ltd



HIRING NOW...

- Full time & part time positions available
- Paid mileage, travel time & annual leave
- Varied shift patterns (7am-2pm & 4pm-10pm)
- Full pre-employment training & ongoing support
- Funded qualifications (NVQ's) & opportunity for further study.
- £11.65 per hr contact time, weekend & bank holiday enhancements apply!

JOIN US IF...

- You have transferrable skills from previous roles in customer service, retail, beauty etc. & want a new challenge
- You drive, have your own car & happy to travel around SO14-SO19 areas for work
- Have the right to work in UK without restriction

CONTACT US -

Email - recruitmentnfps@bluebirdcare.co.uk

Call - 02380 875998

Support Worker at Step by Step

Totton, New Forest
40 hours per week
£28,644.84 per annum



BENEFITS OF WORKING FOR STEP BY STEP

- A basic package of £28,644.84 per annum for 40 hours per week – (30 mins break per shift paid and included in your weekly working hours).
- Package includes an annual salary of £23,284.84 per annum, a shift allowance of £1,200 per annum and a sleepover allowance of £4,160 per annum.
- 33 days of paid holiday (pro rata for part-time).
- Full time permanent contract.
- Holiday increases with service from year 1.
- Training provided, plus the opportunity to gain a funded qualification.
- A company pension scheme with Royal London.
- Life Assurance 2 x basic salary.
- 24/7 access to online GP appointments.
- A health cash plan.
- Casual inclusive dress code.
- Access to an employee assistance helpline, including a separate counselling line.
- Access to a shopping benefit platform.
- Car Parking (you do not need to be a driver)

WHO ARE STEP BY STEP?

Step by Step passionately believes in supporting young people who are going through hard times. Our unique step by step approach, providing accommodation, personal development opportunities and specialist support services, identifies and fulfils aspirations. Each year we work with over 1,500 young people aged 11–25 and our employees play a pivotal role in empowering young people and preventing homelessness.

WHAT WOULD A STEP BY STEP SUPPORT WORKER BE DOING?

As a support worker, you will work with young people to develop their skills and talents and support them to access employment and/or educational facilities, whilst continuing to take on more responsibilities and to achieve and maintain independence.

WHAT IS STEP BY STEP LOOKING FOR

- Step by Step is interested in employing people with the right skills and attitude, so previous experience is not necessarily needed.
- You should be available to work shifts (shift allowance paid) and sleepovers (sleepover allowance paid). Please contact us if you would like a sample rota.
- As we follow the safer recruitment guidelines applicants are required to complete a short online application form.
- Successful applicants are required to undergo DBS checks and must provide two references.

HOW TO APPLY

To apply for this role, please complete the [Application Form](#) and [Equality Monitoring Form](#), and send your CV to Michael.Hone@stepbystep.org.uk.

We're Hiring!

Join the team at one of four services:


thrive
WINDWARD DAY SERVICES
Chandlers Ford


helix
WINDWARD DAY SERVICES
Verwood



spiral blue
WINDWARD DAY SERVICES
Ringwood


windward
Totton

- Small, friendly service providing day opportunities for adults with learning disabilities
- Flexible hours, no nights or weekends!
- Competitive rate of pay
- On the job training
- No experience required
- No two days the same
- Make a difference to people's lives
- Long-term employment prospects and future opportunities
- **£150 bonus for signing up** (and if you're referred by someone else £150 to them too). Ts&Cs Apply.

To find out more give us a call or email us at hr@windward-dayservices.co.uk



 windward-dayservices.co.uk

 02380 860 005



Mindful Care and Support

023 8001 2222

WE ARE RECRUITING

Do you want to **make a difference**?

Are you **ready** for a change of direction?

Do you want to promote **independence**?

Do you want to meet **fabulous** people with a **lifetime** of
achievements?

Do you **drive**?

Good Rates of Pay

Mileage Allowance

Working Reward Scheme

Full Training provided

Opportunities to study at Diploma level

Join our **amazing team** of home care givers today!

We are a **young** and **innovative** domiciliary care company, with a
truly person-centred **vision**.

www.mindfulcareandsupport.co.uk

Vacancies For Fair Havens Care Community – Southampton

Keychange

A Christian Charity, Creating Caring Communities

Care Staff

We are recruiting for more warm and friendly care staff to join our already amazing and fun team at Fair Havens Care Community.

You will be caring and supporting those who live with us in their later years, ensuring that they are living a full and healthy life with the highest standards of care and comfort. Each day at Keychange brings a kind of variety which means you will never feel stuck doing the same things day in day out, you will never be bored! You will be someone's friend, carer, confidant, dance partner and comedy side kick. You will work in a team that not only supports you and champions you, but will also laugh with you, cry with you and celebrate all the good times with you.

We are looking for people who have a genuine caring nature, a warm, friendly personality and someone who is willing to learn. You don't need to have any previous experience in care as we will provide full training and induction.

- £9.75 per hour
- Full/Part Time/Night availability
- Training Opportunities
- Cycle to Work Scheme
- Wellbeing Lead - Keychange, wellbeing champion on each community
- 6 weeks paid annual leave (pro rata)
- Uniform & DBS paid
- Double pay on Bank Holidays
- Full Paid Breaks
- Support from other communities
- Enhanced overtime rate
- Pension and salary sacrifice scheme
- Blue Light Discount Card
- Keychange sick pay for 4 weeks per annum
- Flexible Working Patterns

Cooks

We are recruiting 2 part time cooks to join our amazing team at Fair Havens Care Community. In this role you will be preparing healthy, nutritious and varied meals to those who live with us, taking into consideration dietary requirements and wishes. If you have a passion for cooking with some experience of preparing meals for a large group, then we would like to hear from you. We are proud of our menu at Fair Havens, so we are looking for someone who takes pride in their meals, and who can possibly bake some really nice cakes too – we do love a good cake day! In return for your welcome contribution to our community, we provide a team that not only supports you and champions you, but will also laugh with you, cry with you and celebrate all the good times with you. In addition to this incredible fun working environment, we also provide the following as standard.

- £11.50 per hour
- Training Opportunities
- Cycle to Work Scheme
- Wellbeing Lead - Keychange, wellbeing champion on each community
- 6 weeks paid annual leave (pro rata)
- Uniform & DBS paid
- Double pay on Bank Holidays
- Full Paid Breaks
- Support from other communities
- Enhanced overtime rate
- Pension and salary sacrifice scheme
- Blue Light Discount Card
- Keychange sick pay for 4 weeks per annum
- Flexible Working Patterns

To apply call 023 8079 0874 or email fairhavens@keychange.org.uk



The Out of Town Centre Ltd. www.theoutoftowncentreLtd.com

Day service for adults with special needs.

We are looking for enthusiastic, committed people to work at our day service with our clients. It is preferred that staff have a full driving license to come and join our dynamic team to support our clients through the day, taking part in various activities on and off site.

We specialize sports, health, and wellbeing. We like to go into the community and visit places to have fun.

We collect our clients each morning and drop them home when day service has finished.

We love to go bowling, sailing, swimming, museums, beach walking and the list goes on. We have professional coaches come to us to practice sports and even have an Olympic boccia coach come in once a week.

We supply full training, pension, and annual leave. DBS required.

Experience preferred but not essential. Rate of pay depending on experience.

No bank holidays, no weekends and day hours only.

Applications to theoutoftowncentre@yahoo.co.uk



Unity Care Solutions

Passionate About Care

Searching for Nurses and Health Care Assistants to join our highly skilled team who are passionate about providing complex care to those who need it in Southampton.

We offer generous pay rates, Nurses varying between £35-£37 per hour and Healthcare Assistants starting at £15 per hour!

If you have experience in the following you could be a great addition to our team:

Medication

Behaviour
Challenges

Epilepsy

Cerebral Palsy

Tracheal

Ventilators

Enteral feeding

Personal Care

Unity Care Solutions work with the NHS, Social Services and others who need help to provide complex care and skilled nursing. We also work directly with privately funded clients across Southampton and our other two branches based in Kent and Sussex. We have various roles available in Southampton now which offer flexible working and part time shifts to suit you. Please visit our website www.unitycaresolutions.co.uk/vacancies to apply or email us at jobs@unitycaresolutions.co.uk for more information.

Support Worker

Hours: Flexible, full time, part time, Mon-Sun – work around your lifestyle

Salary range: £9.30-£13.50 per hour

- Are you looking for a flexible role that can fit around you?
- Are you wanting long term career development with paid training?
- Are you passionate about healthcare and the well-being of others?



Team Brain Injury have been providing care and support for Children and Adults with Acquired and Traumatic brain injuries in the South of England for 17 years.

We are expanding and have some new and exciting Support Worker opportunities available in Southampton.

We take care of people that take care of people and have created a culture where you will feel supported, valued, listened to and a part our Team. If you are a passionate about care and genuinely want to make a difference to people's lives, we would love to hear from you.

For more information on how to apply for this role, please visit our website at www.teambraininjury.co.uk

To apply please send your CV to aishah.abdulla@acuitycaregroup.com

Care and Support Work

SDR Care is a growing business with care homes situated on the South

Coast. We pride ourselves on investing in our people. We are committed to the UK Living Wage Foundation; we train and develop our staff to enable them to reach their full potential and we are a collaborative and supportive team. Opportunities exist for Support Workers to join our teams in

Bishopstoke (SO50) and West End (SO30) and Woolston (SO19). These homes specialise in person-centred care of people with learning difficulties and autism.



Applicants might have experience of working in a similar environment, but this is not essential as training will be provided. You will be enthusiastic, an effective communicator, have high standards, and be sensitive to the needs of people with learning disabilities.

Working hours are 37 hours per week (part-time may be considered), on a rotational shift pattern with varied shifts including weekdays and weekends; a flexible approach to work is essential.

We are looking for a person who:

- is passionate about providing the highest quality of care
- aspires to work with an innovative care business
- has a caring and supportive nature
- can work independently as well as part of a team
- aspires to grow their career
- preferably has a Full UK Driving Licence

In return, you can expect:

- a salary of £24,024 (reviewed annually)
- Bank Holiday Double Pay
- an annual bonus based on company performance
- the equivalent of at least 29 days holiday (including bank holidays).
- a company pension scheme where eligible
- a collaborative and supportive induction process
- continuing professional development
- support towards achieving your Care Certificate, Level 2/3 Health and Social Care
- in house specialist Autism training
- Company sick pay (following a successful probation period)
- to both receive a £500 bonus if you refer a friend or ex colleague to work for SDR Care

Other Benefits:

- Casual dress
- Company pension
- On-site parking
- Referral programme
- Sick pay
- Wellness programmes

If you are the successful candidate, we will contact you to complete an online Enhanced Disclosure & Barring Service check (DBS) when you have accepted your offer letter.

Please visit sdrcare.co.uk/#recruitment to apply



Care Worker / Support Worker Role: Hampshire (locations including Southampton Central, Bursledon, Sholing, Bitterne, Hamble, Totton, Eastleigh and Hedge End)

Start Date: ASAP

Duration: Part Time and Full Time Hours available - Flexible hours!

We are seeking motivated and reliable carers to work with Morecare Support Services Ltd. We are one of the top care agencies in Hampshire and provide the highest quality care possible for the people we support. We supply to a variety of services throughout Hampshire including elderly, learning disability, residential, nursing homes and day centres.

We are recruiting to support a number of learning disability and elderly services that we provide to in Hampshire (including Southampton Centre, Sholing, Bursledon, Bitterne, Totton, Eastleigh and Hedge End). You can choose to work in areas / locations best suited to you.

Day and Night shifts (waking and sleep-in shifts) are available across the homes with varying shifts times, including early, late and mid-shifts. Both weekdays and weekend shifts are available.

We offer Fast Tracked Applications if you have:

- A minimum of 3 months experience
- Enhanced DBS Certificate and Subscribed to the Update Service
- Certification or proof of Mandatory Training completed
- Fully Covid-19 vaccinated with evidence

Due to Covid-19 restrictions all interviews and employment checks are done while complying with regulations, undertaking phone interviews instead of face-to-face.

Weekly pay available for the first month of employment if required.

Care Worker / Support Worker Responsibilities Include:

- Providing the highest standard of care at all times, supporting people with all aspects of personal care where required, promoting as much independence as possible. Personal care may include washing / bathing, dressing, supporting to use toilet.
- Helping people to shop for items they wish to buy including their clothes, personal items and food, this may include completing shopping lists and menu planning. Also supporting to prepare meals as required.
- Helping people to maintain their home, completing housework including cleaning and laundry.
- Supporting people to manage their own money.
- Supporting people with activities they enjoy, including shopping, crafts, walks, swimming and many other activities.
- Providing companionship and emotional support to people.
- Working with a variety of service users ranging from older adults, the physically disabled and individuals with learning disabilities.

- Understanding and addressing individual needs in terms of age, gender, race, sexuality and disability, and meeting specific cultural and religious needs.

Benefits Include:

- Flexible hours
- Good rates of pay
- Regular training
- Career progression
- Pension
- Holiday pay
- Colleague referral scheme
- Opportunity to undertake the Diploma in Health and Social Care
- Discounted train travel
- Weekly pay for first month of employment if prefer
- Eligible for a Blue light card and the discounts that provides
- Higher rates for own car drivers

About the Company:

A family run business with over 25 years' experience within the care sector, we are proud to be an approved supplier for the Local Authority as well as the Private Sector.

We recognise that our employees are our most important asset. All staff are carefully selected, trained and inducted by our in-house training team.

The ideal Care Worker / Support Worker:

- Have experience within the care sector an NVQ / Diploma in Care / Care Certificate would be an advantage
- Willing to work weekends and shift work
- Have excellent communication skills (oral and written)
- Be conscientious, motivated and have a caring approach to provide the best support possible
- Be flexible and reliable
- Drivers Preferred but not essential

In return for your commitment, we offer flexibility and support at all times as well as ongoing training.

This is a fantastic opportunity for candidates looking to enter the care sector and for experienced Care Workers / Support Workers to join a reputable business that encourages career progression and offers great rates of pay.

If you feel you have the skills and experience and the desire to carry out this role then apply today for the chance to be considered for an early interview.

morecaresupport.co.uk/join-us/

New Forest Care



#InspiringFutures

Are you looking for a rewarding career change?

We are looking for positive, compassionate and resilient staff to join our dedicated teams.

We have opportunities in our children's residential care homes and school sites based in the Southampton Waterside area.

Current Vacancies include:

[Activity Residential Support Worker](#)

[Residential Support Worker \(Children\)](#)

[Senior Support Worker - Children's Home](#)

[Alternative Education Teacher](#)

[Registered Mental Health Nurse](#)

[HR Business Partner](#)



Find out more and apply at


www.newforestcare.com/careers

Consider becoming a Personal Assistant in care Today!

Have you considered becoming a Personal Assistant (PA) in Care? Permanent or temporary, full-time or just for a few hours a week? Becoming a Personal Assistant could be the best fit for you! There is no typical PA in Care role. Each job is as unique as the individual you would be supporting. Being employed directly by them means you can really make a difference in someone's life.

Watch the videos here and find out more at [HampshirePAFinder](https://www.hampshirepafinder.org.uk).



Sign up for free to create a profile and to be contacted by potential employers. Start your career in care Today.

An illustration of diverse people of various ages and ethnicities, shown from the chest up, arranged in a semi-circle around the central text. The people include a young man with blonde hair, a woman with dark skin and a headscarf, a young man with brown hair, an older man with a white beard, a man with dark skin, and a woman with dark hair wearing a yellow top.

Are **YOU** looking for a **UNIQUE** Flexible **job?**

There is **no typical Personal Assistant in Care**

Find out more at www.hampshirepafinder.org.uk/info

A square QR code with a green border, located at the bottom left of the advertisement.The logo for Hampshire Personal Assistants in Care, featuring three stylized human figures in red, green, and blue above the text "HAMPSHIRE PERSONAL ASSISTANTS IN CARE".

SCA Care Jobs



Are you looking for a job that supports your community?

Now recruiting full time & part time Home Care Support Workers.

SCA Care is a not-for-profit organisation supporting people to live independently in their own homes.

We value our staff as they are the most important part of what we do.

We offer:

- Free training including QCF qualification
- National Living Wage
- Work to fit your preferred hours
- Paid travel time and mileage
- Refer a friend bonus scheme
- Opportunities for career progression
- 6 weeks paid holiday and a day off for your birthday



To find out more visit www.sciagroup.co.uk/jobs
or call 023 8051 6016

SCA Care is part of the Social Care in Action Group of charitable social enterprises.
Registered Charity Number 1096903

Council Vacancies

Southampton City Council

If you want to play a significant role in shaping a successful city take a look at our vacancies: www.southampton.gov.uk/jobs



Social Worker	Service Support Officer
Qualified Greenkeeper	Occupational Therapist
Young People's Practitioner	School Crossing Patrol Officer
Flood Risk Management Officer	Sustainable Travel Officer (Schools)
Homeless Mediation Outreach Officer	Executive Assistant to the Leader of the Council
Travel Passenger Assistant - Casual	Senior Practitioner

Eastleigh Borough Council

[Eastleigh Borough Council Jobs](#)



- Legal Senior Specialist (Contracts and Commercial)
- Pollution Control Manager
-

New Forest District Council

www.newforest.gov.uk/article/1094/Council-jobs



Waste and Recycling Supervisor	ICT Senior Analyst (Applications) x 2 permanent
ICT Analyst (Infrastructure) - Fixed Term 24 months	Technical Business Analyst - 1 x permanent & 2 x fixed term 24 months
ICT Analyst (Security) - Fixed Term 24 months	ICT Analyst (Applications) - fixed term 24 months

Hampshire County Council

careers.newjob.org.uk/HCC



[School Crossing Patrol Officer - Southampton Road, Bartley](#)

[Therapeutic Reviewing Coordinator](#)

[School Crossing Patrol Officer - Winsor Road, Bartley](#)

[Family Finding Coordinator \(Adopt South\)](#)

[Operations Room Assistant \(Swanwick Lodge\)](#)

[Catering Assistant \(LH\) - Locks Heath Infant School, Southampton - Ed catering 619006 \(V](#)

[Qualified Social Worker](#)

[Community Engagement Ranger](#)

[Secure Residential Support Worker \(Swanwick Lodge\)](#)

[Library Team Assistant](#)

[Community Engagement Ranger - Dog Industry Outreach](#)

[Child and Family Support Worker](#)

[Nurse \(Older Adults\)](#)

[Catering Team Leader](#)

[Chef](#)

Council Jobs

Winchester City Council

- [Customer Services Repair Advisor](#)
- [Planning Officer](#)

West End Parish Council

- Full time Admin Officer - [Job description and Person Specification](#)
- Part time Youth Worker - [Job description and Person Specification](#)

To apply, please complete the below application form and return to clerk@westend-pc.gov.uk.
[WEPC Application Form](#)

Civil Service Jobs

www.civilservicejobs.service.gov.uk



Civil Service

<p>MSc Level 6 Chartered Surveyor Apprentice Valuation Office Agency</p>	<p>Operational Leader - Southern Department for Work and Pensions</p>
<p>Certification Officer - Customer Service Maritime and Coastguard Agency</p>	<p>Part Time MAPPA Administrator - Hampshire (South Central) (Ref: 91597) HM Prison & Probation Service</p>
<p>Senior Probation Officer - Southampton (Full-Time) (South Central) (Ref:91499) HM Prison & Probation Service</p>	<p>Programme Facilitator (Southampton) - Minimum Hours Contract (South Central) (Ref: 91767) HM Prison & Probation Service</p>
<p>Harvesting Forester (Standing Sales) Forestry Commission</p>	<p>Finance Administration Officer Forestry Commission</p>
<p>Analytics Support Officer Children and Family Court Advisory and Support Service</p>	<p>Nutrition Intern Food Standards Agency</p>
<p>Summer Internship Programme 2025 Remote working (anywhere in the UK)</p>	<p>Researcher Care Quality Commission</p>

Working with Children and Young People

[Working for Southampton City Council or in a Southampton school](#)

Most job vacancies at Southampton City Council are shown on the [jobs portal](#). Only a small number of schools' job vacancies are managed by Southampton City Council - please see [Teach Southampton](#). Some vacancies are listed on the [Hampshire Jobs portal](#). Recruitment for the majority of schools is managed by the schools themselves. Please contact each school directly for a list of their current vacancies.

Education Jobs Hampshire

Apply for teaching, support and leadership roles in schools in Hampshire.

Find vacancies here: <https://hampshire.education-jobs.org.uk/Vacancy/SearchResults>

Southampton Education Forum

The SEF website has links to job adverts for jobs in schools in and around Southampton.

Find out more: <https://www.teachsouthamptoneducation.co.uk/vacancies-southampton>

Daynurseries.co.uk

Day Nursery Jobs in the UK & Nursery School Jobs in the UK

The leading Nursery Jobs board with 1,398 Jobs including Nursery Managers, Nursery Assistants & Nurses

Southampton Jobs Board: <https://www.daynurseries.co.uk/jobs/index.cfm/searchtown/Southampton>

School and College Careers Pages

Most schools and colleges advertise their jobs on their own websites – here's where you can find those job vacancies:

Primary Schools		
Banister Primary School	Bassett Green Primary School	Bevois Town Primary School
Bitterne CE Primary School	Bitterne Manor Primary School	Bitterne Park Primary School
Foundry Lane Primary School	Freemantle Community Academy	Harefield Primary School
Highfield CE Primary School	Hightown Primary School	Holy Family Catholic Primary School
Hope Community School	Kanes Hill Primary School	Mansbridge Primary School
Mansel Park Primary School	Mason Moor Primary School	Newlands Primary School
Oakwood Primary School	Portswood Primary School	Redbridge Primary School
Shirley Warren Primary and Nursery School	Sinclair Primary and Nursery School	Springhill Catholic Primary School
St Denys Primary School	St John's Primary and Nursery School	St Mark's CE Primary School
St Mary's CE Primary School	St Monica Primary School	Swaythling Primary School
Tanners Brook Primary School	Thornhill Primary School	Valentine Primary School
Weston Park Primary School	Wordsworth Primary School	

Secondary Schools		
Bitterne Park School	Cantell School	Chamberlayne College for the Arts
Oasis Lordshill, Mayfield and Sholing	Redbridge Community School	Regents Park Community College
St. Anne's Catholic School	Saint George Catholic College	Upper Shirley High
Woodlands Community College		

Colleges		
Barton Peveril	Brockenhurst College	City College
Eastleigh College	Itchen College	Peter Symonds
Richard Taunton	Sparsholt College	Totton College

Education Jobs Hampshire

hampshire.education-jobs.org.uk

<u>Closing Date</u>	<u>Post</u>	<u>Establishment</u>
<u>20/12/2024</u> <u>12:00:00</u>	<u>Examination Invigilators - non-Hampshire</u>	<u>Upper Shirley High School</u>
<u>22/11/2024</u> <u>12:00:00</u>	<u>Science Teacher & STEM Coordinator</u> <u>TLR £3,017 - non-Hampshire</u>	<u>Redbridge Community School</u>
<u>31/10/2024</u> <u>12:00:00</u>	<u>English SEN Teacher</u>	<u>Yarrow Heights School</u>
<u>31/10/2024</u> <u>12:00:00</u>	<u>Administration Assistant</u>	<u>The Hamble School</u>
<u>30/10/2024</u> <u>17:00:00</u>	<u>Class Teacher - non-Hampshire</u>	<u>Glenfield Infant School</u>

Vacancies at Youth Options

Youth Options works with children and young people across Southampton and west Hampshire. We believe that all children and young people can achieve a better future if given the chance. You can help us achieve that vision.



Our mission is to support children and young people to engage, develop and become empowered to achieve a better future. We believe that every young person has the potential to realise their abilities and aspirations and make a valuable contribution to their communities.

To apply

Email admin@youthoptions.org.uk for a recruitment pack and application form or visit youthoptions.org.uk/about-us/join-the-team

<p><u>Community Café Manager</u> Southampton Full-Time <u>Apply Now</u></p>	<p><u>Finance Trustee</u> Volunteer <u>Apply Now</u></p>
<p><u>Gardening Club</u> Volunteer Eastleigh Flexible <u>Apply Now</u></p>	<p><u>Community Champions</u> Volunteer Hampshire Flexible <u>Apply Now</u></p>

Early Years, Nursery and School Vacancies

<p>Pupil Support Assistant - Bassett Green Primary School Contract Length: Fixed Term Work Hours: Full time - 29.16 hours per week Salary: £27,899 - £30,060 per annum Closing Date : 08/11/2024</p>	<p>School Crossing Patrol Officer Work Hours: Part time, term time only (see advert for details) Closing Date : 24/11/2024 Vacancy Location:</p> <ul style="list-style-type: none"> • Bassett Green Primary School • Beechwood Junior School & Glenfield Infant School • Bitterne Park Primary School • Mansel Park School • Foundry Lane Primary School • Ludlow Infant & Junior Schools • St Monica Primary School • Tanners Brook Primary • Maytree Infant School/Mount Pleasant Junior School
<p>Travel Passenger Assistant - Casual Contract Length: Casual Work Hours: Term Time Only - Hours will vary within the range of 07:30 to 09:30 and 14:30 to 16:30 Salary: £12.85 per hour Closing Date : 10/11/2024</p>	<p>Assistant Site Manager - Newlands Primary School Contract Length: Permanent contract Work Hours: 20 hours per week, term time Salary: £23,500 Closing Date : 22/11/2024</p>
<p>Higher Level Teaching Assistant/Cover Supervisor - St Mark's CoE Contract Length: Permanent Work Hours: Full time - 33.75 hours per week Salary: £23,348.40 - £26,615 per annum Closing Date : 15/11/2024</p>	<p>English Teacher - St Mark's CE School Contract Length: Permanent Work Hours: Full Time Salary: MPS / UPS Closing Date : 18/11/2024</p>
<p>Nursery Practitioner - Level 3 Qualified - Hardmoor Early Years Centre Contract Length: Fixed term for 12 months Work Hours: Full time - 37 hours per week, various shift patterns available Salary: £24,038 per annum Closing Date : 01/11/2024</p>	<p>Nursery Practitioner Apprentice - Hardmoor Early Years Centre Contract Length: Fixed term for 12 months Work Hours: 37 hours per week, various shift patterns available Salary: £23,500 per annum Closing Date : 01/11/2024</p>

[Class Teacher - Shirley Warren Primary and Nursery School](#)

Contract Length: Fixed term (two terms)

Work Hours: Full time

Salary: £39,650 - £49,084 per annum

Closing Date : 09/11/2024

[Admin Assistant - Moorlands Primary School](#)

Contract Length: Permanent

Work Hours: Full time, 37.5 hours per week (Monday to Friday: 08:30am to 16:30pm), term time only

Salary: £26,609 - £28,770 per annum, pro rata (Actual: £23,753.09 - £26018.60)

Closing Date : 11/11/2024

[After School Club Playworker - Springhill Catholic Primary School](#)

Contract Length: Permanent

Work Hours: 9 hours per week, Tuesday - Friday (Tuesday - Thursday: 15:15 - 17:15, Friday: 15:15 - 18:00), term time only

Salary: £23,500 per annum, pro rata

Closing Date : 04/11/2024

[Casual Lunchtime Assistant - Newlands Primary School](#)

Contract Length: Casual

Work Hours: 8.75 hours per week (lunch time hours 11:30 - 13:15), term time only

Salary: £22,737 per annum, pro rata

Closing Date : 08/11/2024

[Lunchtime Play Leader - Newlands Primary School](#)

Contract Length: Fixed Term until 22nd July 2024

Work Hours: 5 hours per week (1 hour per day (12.15pm - 1.15pm) Mon - Fri), term time only

Salary: £23,500 per annum, pro rata (£2,723 Actual)

Closing Date : 08/11/2024

[Pastoral Support Officer \(Secondary\) - St Mark's CE School](#)

Contract Length: Permanent

Work Hours: 30 hours per week, term time only

Salary: £26,609 - £28,770 per annum, pro rata

Closing Date : 04/11/2024

University of Southampton Jobs



<u>Domestic Assistant</u>	<u>Sports Operations Assistant (lifeguard)</u>	<u>Civic University Partnerships Officer</u>
<u>Administrator</u>	<u>HR Officer</u>	<u>Data Centre Infrastructure Engineer</u>
<u>Residences Customer Service Assistant</u>	<u>Financial Systems Accountant</u>	<u>Customer Service Assistant</u>
<u>Senior Administrative Officer, International</u>	<u>Administrator Support for Institutional Sustainability Strategy</u>	<u>Donor Relations Officer</u>
<u>Student Visa & Immigration Advisor</u>	<u>Multimedia Reporter</u>	<u>Student Experience Administrative and Support Roles</u>
<u>Catering Assistant</u>	<u>Research Technician</u>	<u>PSDI Communications and Engagement Officer (3892-24)</u>

Solent University Jobs



<u>Clinical Placement Tutor</u>	<u>Senior Lecturer Nursing</u>
<u>Associate Lecturer - Bridge Simulation and Ship Handling</u>	<u>Student Adviser</u>
<u>Lecturer in Sociology</u>	<u>Research Fellow</u>
<u>Procurement Assistant</u>	<u>Technical Instructor in Make Up and Hair Design (Maternity Cover)</u>
<u>Lecturer in Biomedical Science</u>	<u>Associate Lecturer in Fashion</u>

recruitment.solent.ac.uk/vacancies

Apprenticeships



Apprenticeships help you earn while you learn and acquire all the training and skills you need to pursue your career.

- [The government website](#) advertises apprenticeships available across the UK. Search by occupation and postcode

Who are apprenticeships for?

You can start an Apprenticeship from the age of 16 and there is no upper age limit. If you're looking for your first job, already in a job and want to gain professional qualifications, thinking about re-training into a different career, or returning to work, an apprenticeship can help you to develop important skills while gaining valuable work experience.

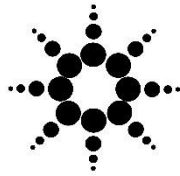
What types of apprenticeship are there?

- Intermediate (Level 2) – this is equivalent to 5 GCSEs
- Advanced (Level 3) – this is equivalent to 2 A Levels
- Higher (Level 4 or 5) – this is equivalent to a BTEC, HND or Foundation Degree
 - Degree (Level 6 or 7) – this is equivalent to a Bachelor's or Master's

Find out more at apprenticeships.gov.uk

Useful links

- [Amazing Apprenticeships](#)
- [Institute for Apprenticeships – Apprenticeships guide](#)
 - [National Careers Service](#)
 - [GOV.UK – Find an apprenticeship](#)
 - [Solent Business & Skills Solutions](#)



[Nursery Apprentice – Piglets Day Nursery, Bursledon](#)

Piglets Day Nursery

Welcome to Piglets Day Nursery. Established in 1998, Piglets is set in the beautiful River Hamble country park, with peaceful surroundings and lots of outdoor space. Piglet's is a family run business owned by Julie and Aubrey Sims, catering for children ranging from 3 months to 5 years.

[Nursery Apprentice – Sunrise Day Nursery, Southampton](#)

Sunrise Day Nursery

Located in the heart of Southampton, Sunrise Day Nursery caters for students at Southampton City College as well as the local community. With its diverse staff and warm, friendly, multicultural environment, it cultivates a real sense of knowledge and understanding of everyone's needs and feelings. What a lovely place to be!

[Nursery Apprentice – Fairlands Day Nursery, Southampton](#)

Fairlands Day Nursery

Based in old school buildings, Fairlands is a beautiful nursery that has been renovated to a high standard to create a real home from home feel.

[Nursery Apprentice – Sticky Fingers Pre-School, Southampton](#)

Sticky Fingers Pre-School

We are a charity based preschool and are run by a voluntary committee of parents, carers, and supporters within the community. We provide children aged 2-4 years with exciting opportunities to learn and develop which helps them prepare for their transitions to school.

[Nursery Apprentice – Busikids, Southampton](#)

Busikids

Our philosophy at Busikids is that we believe children are at their best growing and learning when they feel secure, loved and are having fun.

[Nursery Apprentice – Little 1 Nursery, Eastleigh](#)

Little 1

Little 1 Nursery is an exceptional day nursery set in a third of an acre in the heart of Chandlers Ford. The building is an extended bungalow with a large garden for children aged 3 months to school age. We look forward to welcoming you for a visit to see our wonderful Nursery environment.

[Nursery Apprentice – Noah's Ark Day Nursery, Southampton](#)

Noah's Ark Day Nursery

We have been providing early years services in Southampton since 2014 and we are proud of the quality of the care we offer as well as the reputation we have built. We opened our first setting – Noah's Ark Pre-School – as an independent community pre-school based in Lordswood, Southampton. We have an amazing team of highly experienced staff and pride ourselves on creating a very friendly environment where children are happy, safe and have fun whilst learning and making new friends.

For our standalone qualifications please take a look at our website: showcasetraining.co.uk

Find an Apprenticeship Service

The following is just a selection of the Apprenticeships available in Southampton. There are currently over 30 Apprenticeship Vacancies in Southampton so if you can't find something you're looking for in this selection, please click here: [Apprenticeships in Southampton](#)

<p><u>Financial Accountant Apprentice</u> University Hospital Southampton NHS Foundation Trust Hampshire, SO16 6YD Training course Accountancy or taxation professional (level 7) Annual wage Competitive</p>	<p><u>Commercial Management Apprenticeship</u> SES (ENGINEERING SERVICES) LIMITED Southampton, SO17 1BJ Training course Construction quantity surveying technician (level 4) Annual wage Competitive</p>
<p><u>Pharmacy Assistant Apprenticeship</u> ARUN SHARMA CHEMISTS LTD 78 Weston Lane, SO19 9GH Training course Pharmacy services assistant (level 2) Annual wage £13,312 a year</p>	<p><u>Network Engineer Apprenticeship</u> RANDSTAD GROUP UK Hampshire, SO15 1GQ Training course Network engineer (level 4) Annual wage £18,000 a year</p>
<p><u>Advanced Apprentice - Rail Engineering (Level 3)</u> SIEMENS MOBILITY LIMITED Southampton, SO14 0PS Training course Rail engineering technician (level 3) Annual wage £16,000 a year</p>	<p><u>Broadcast and Media Systems Technical Operator Apprentice (L3)</u> BBC Public Service Southampton, SO14 7PW Training course Broadcast and media systems technical operator (level 3) Annual wage £21,840 a year</p>
<p><u>Civil Engineering Higher Level Apprenticeship</u> MOTT MACDONALD LIMITED Southampton, SO50 9NW Training course Civil engineering senior technician (level 4) Annual wage £17,850 a year</p>	<p><u>Apprentice Signage and Livery Technician</u> STEWART SIGNS LTD (STAFF) Chandler's Ford, Eastleigh, SO53 4BW Training course Signage technician (level 3) Annual wage £14,976 a year</p>
<p><u>Accounts Trainee Apprenticeship</u> INTEGRATE ACCOUNTANTS LIMITED Southampton,, SO14 3XB Training course Accounts or finance assistant (level 2) Annual wage £16,500 a year</p>	<p><u>Business Administration Apprentice - Southampton</u> ON SITE SERVICES LIMITED Southampton, SO17 3AN Training course Business administrator (level 3) Annual wage £16,000 a year</p>
<p><u>Apprenticeship for MEP / M&E Quantity Surveyor</u> MAG-7 LIMITED Southampton, SO15 1GW Training course Construction quantity surveyor (degree) (level 6) Annual wage £15,000 a year</p>	<p><u>Business and Customer Service apprentice</u> WILLIAMS SHIPPING MARINE LIMITED Hampshire, SO15 0LF Training course Business administrator (level 3) Annual wage £14,625 a year</p>

Volunteer
with
 MOUNTBATTEN

“I feel part of my community and I know I’m making a difference. I’ve learned new skills and met wonderful people. But most of all I am having fun!”

Debbie Thresher
MOUNTBATTEN volunteer



Volunteers urgently needed at your local hospice charity shop!

Can you spare a few hours each week to help your local hospice raise vital funds to support people in your area?

From receiving and sorting donations into stock, serving customers, and getting creative with our window displays, our shops offer a fun and social environment where you will work with an enthusiastic team, meet lots of new people, and be an integral part of your local community.



mountbatten-hampshire.org.uk/volunteer

Volunteers needed in Portswood, Romsey, and Shirley.

Register online, pop in for a chat, or call 02382 548852

Volunteer with the Society of St. James



Are you passionate about giving back to your community and using your skills to help others? We are looking for enthusiastic volunteers to join our team at The Society of St James.

We have two exciting volunteer opportunities available:

- **Mini Bus Driver:** Do you have a valid driver's licence and enjoy helping people? If so, we are looking for kind and reliable volunteers to drive our minibus during the week. This role involves providing transport for our service users to access education and sport activities. You'll play a vital role in ensuring they can stay connected to their community and access services.
- **Polish Translator:** Are you fluent in both English and Polish? We are seeking a volunteer translator to assist our team in communicating with our Polish service users. This role involves interpreting during welfare checks and support sessions for a couple of hours each week. Your language skills will help us remove language barriers and ensure everyone feels welcome, heard and included.

Why Volunteer with Us?

- Make a real difference in the lives of others.
- Gain valuable experience and develop new skills that can enhance your employability.
- Meet like-minded people and build a strong sense of community.
- Feel good about giving back to your local area.

Volunteering can help you get back into work by:

- Providing a reference for your cv showcasing your reliability and commitment.
- Helping you develop new skills or refresh existing ones.
- Building your confidence and interview skills.
- Expanding your network of contacts.

If you are interested in applying for one of these volunteer roles or learning more:

[Volunteer Application Form - Click here](#)

Email: volunteering@ssj.org.uk



Read Easy

Helping adults learn to read

Read Easy Southampton needs your help!

Who are Read Easy Southampton?

[Read Easy Southampton](#) is a volunteer organisation that provides free and confidential 1-2-1 help for adults who struggle with reading. Southampton City Libraries are supporting the group in their mission to recruit more coaches.

What does a reading coach do?

A coach provides free and confidential 1-2-1 help for adults who struggle to read, at approved venues across the city for two half hour sessions per week. We will match you with a reader in your local area on days/times that suit you.

Is there any training?

You will receive a coach handbook, full training and ongoing support from the Read Easy Southampton Team, including practical help from your coordinator and advice from literacy specialists.

Do I need any qualifications?

No special qualifications are required, just an interest in the difficulties faced by those who struggle to read, plus energy, enthusiasm and commitment!

What do our existing coaches think?

We already have some amazing coaches who are making a real difference. Lucy, has been coaching for 6 months coaches and shared her thoughts:

"I knew I wanted to try a new challenge and becoming a coach has been fantastic – I'm doing something that is making a real difference. I can honestly say it's one of the best things I've ever done"

Want to find out more?

For more information or an informal chat about the role, please contact our Volunteer Recruiter Naomi Clarke via telephone: 07714 444244 or via email:

southamptonrecruiter2@readeasy.org.uk or contact our Coordinator Allison Walker via telephone: 07392 517334 or via email: southamptoncoordinator@readeasy.org.uk

Fancy joining our team?

We have other exciting opportunities for volunteers to join our team in Southampton.

Coordinator - A crucial role that helps to recruit coaches, matches readers with coaches and provides ongoing support to reading pairs.

Admin Help - Take minutes, keep records up to date and generally support the Team Leader with meetings and communications.

Literacy Specialist - Provide support with literacy issues and assist in running Coach Meetings. Experience of teaching literacy to adults would be required.

Volunteer Recruiter - Help to manage the recruitment and interviewing of volunteers for the group.

Citizens Advice Southampton is looking for new Trustees

Trustees; these are voluntary positions. Unremunerated but with reasonable expenses covered

Skills; we are looking for anyone with relevant experience who is interested in ultimately becoming Treasurer, Vice-Chair or Chair

Where; Southampton

Time; the Board of Trustees meets once a month apart from August and December when there are no meetings. In addition, each Trustee will be part of a focussed committee dedicated to either People Management, Finance or Governance and Risk.

What will you be doing?

Our Trustees;

- Regularly attend, prepare for and take full part in meetings
- Provide support and assistance to the Chair in carrying out their responsibilities
- Actively contribute to setting policy and strategic direction
- Monitor whether the service complies with its governing document, whether Citizens Advice standards are met, and how well we are meeting the needs of our community

What's in it for you?

Not only will you directly contribute to the success of this essential charity in supporting the local community, for you personally there are many benefits. Such as;

- Meet others and build relationships with other trustees, paid staff, volunteers and other community members
- Build on your governance and leadership skills
- Increase your employability

What are we looking for?

Although you will not necessarily need to have prior experience of being a Trustee, we are specifically looking to recruit anyone with relevant experience which will lead them to become a future Treasurer, Vice-Chair or Chair.

Useful skills for Trustees include;

- Effective communication skills and willingness to participate actively in discussions
- Commitment to the aims, principles and policies of Citizens Advice Southampton
- Willingness and ability to learn, and to develop and understand your own attitude
- Ability to work effectively as part of a team
- Ability to think creatively and to exercise good independent judgement
- Ability to understand and accept the responsibility and liability of being a trustee

Interested?!

If you would like more information or an informal chat about the role, please email Emma Vint, HR Manager at evint@sotoncab.org.uk

We can then arrange for you to have an informal chat with one of our Trustees who can tell you more about the role and answer any questions you might have.

To apply please visit the vacancies page on our website - [Vacancies - Citizens Advice Southampton](#)

Citizens Advice Southampton are an equal opportunities employer and encourage applications from all who meet the above specification irrespective of sex, gender reassignment, marriage or civil partnership status, pregnancy and maternity, sexual orientation, race, religion or belief, age, or disability.



Volunteer task description

Drivers Mate/Warehouse Operative



Purpose of the role

To assist in providing good quality second-hand furniture and household items to people in need and/or assist with deliveries, removals and collections.

KEY TASKS

- Finding and sorting the goods to be delivered at the start of the day.
- Loading and unloading the vehicles with goods for delivery and collection.
- Help the driver with delivering the goods to the client's home.
- Collecting goods from the public.
- Sort goods as they arrive in the warehouse and store them in the correct areas.
- Carry out minor repairs to items of furniture/ensure it is clean.
- Break down all goods for recycling and keep rubbish to a minimum.
- Treat all clients in a friendly and polite manner.
- Maintain client confidentiality at all time.

General responsibilities

- Always comply with SCRATCH's volunteering policies – **including health and safety, Confidentiality, Equality and diversity and green housekeeping.**
- Take shared responsibility for safety and maintenance of the vehicle during the shift; including reporting any accidents or incidents to the project coordinator and any damage caused to the vehicle.
- Make sure the premises are kept clean and tidy.

Time commitment

Is negotiable, but a minimum of 4 hours a week. Operating hours are Monday to Friday 8:30am – 4:30pm.

Location

The post is based at Unit 33, Mount Pleasant Industrial Estate, Southampton, SO14 0SP.

Expenses

Reimbursement of out of pocket travel expenses between home and volunteering location and other reasonable expenses as agreed with supervisor.

Supervision and support

Provided by Warehouse Operations Manager, or duty member of staff and Volunteer Manager.

Who are we looking for?

We are looking for people with a "can do" approach, who are committed to SCRATCH's aims and values to tackle hardship. Applicants must be physically fit, a good team player and communicator, and willing to work flexibly. Willingness to attend support sessions and training is essential.

Interested?

Contact the Volunteer Manager: Lizzie Osborne lizzie@scratchcharity.co.uk

To find out more about SCRATCH charity at www.scratchcharity.co.uk

Last updated 10/1/2024

Supported by



Volunteering

Southampton Area Talking Echo (SATE) is seeking three or four volunteers with a few hours to spare to help with administration duties

SATE are a small registered charity manned entirely by volunteers who produce a free fortnightly audio newspaper for blind and partially sighted people.

Volunteers will manage the receipt and dispatch of USB memory sticks, with news and magazine articles prepared and recorded by other volunteers.

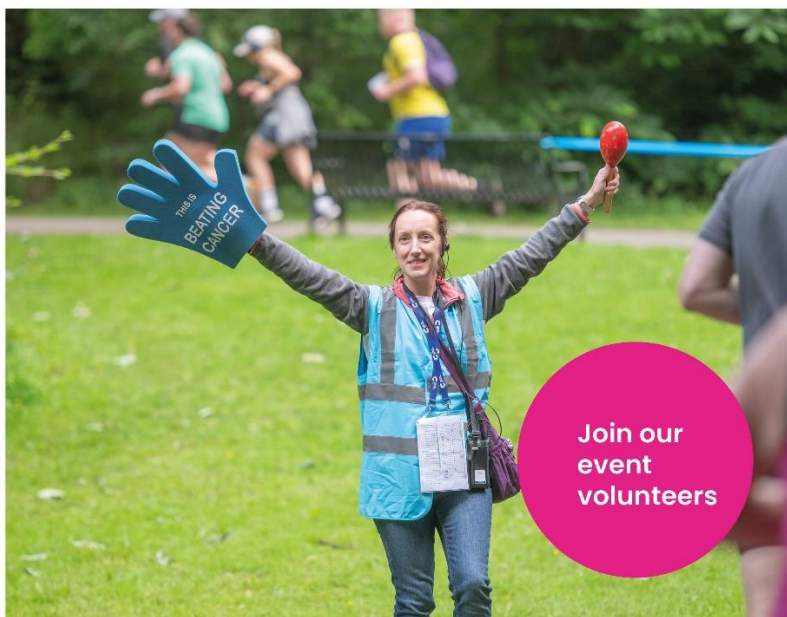
Duties would either be on Tuesday or Wednesday mornings, once a fortnight.

To find out more and apply, call 023 8033 3343, or email admin@sate.org.uk



**CANCER
RESEARCH
UK**

Together we are
beating cancer



Join our
event
volunteers

**Can you give your time
this summer?**

Meet new people, develop your skills
and make a big difference.

Sign up to volunteer at your local event.



Scan or visit
[cruk.org/
volunteer](http://cruk.org/volunteer)

Cancer Research UK is a registered charity in England and Wales (1089464), Scotland (SC041666), the Isle of Man (1103) and Jersey (247).
Registered address: 2 Redman Place, London, E20 1JQ.



GROW People



Southampton City Council's free and impartial careers, training and employment information website

Southampton Young Adults Employment Hub:

southampton.gov.uk/grow/people/young-adults-employment-hub

Events & Opportunities calendar showcasing courses, training and careers events across the city: southampton.gov.uk/grow/people/events-and-training

Information about college, apprenticeships and employment options for young people leaving school: southampton.gov.uk/grow/people/career-and-education-pathways

Links to Employment Support services in Southampton: southampton.gov.uk/EST

Information about Adult Learning in the city: southampton.gov.uk/grow/people/adult-education

Further information and support relating to employment, education and training: southampton.gov.uk/grow/people/additional-support-for-employment-and-working

Want to improve your chances of finding work? See the T.E.E.M.

Training **E**ducation **E**mployment **M**otivation



We can help you with

- ✓ Your job application forms
- ✓ Job searching
- ✓ CV
- ✓ Disclosure advice
- ✓ Preparing for interviews
- ✓ Gaining skills
- ✓ Moving towards work
- ✓ Volunteering
- ✓ Employability workshops
- ✓ Confidence workshops
- ✓ Motivation workshops

Day	T.E.E.M. work club drop-ins	Time
Monday	Bitterne Library, IT room, SO18 5EG	10am-12pm
Thursday	Central Library, Learning Centre, 1st floor, SO14 7LR	3-5pm

Or book an appointment at a time and place that suits you by visiting:
bit.ly/TEEMworkclubs For updates and further info, follow:

 @sotoncareers  Southampton Housing Services

Tel 023 8091 7868 or visit us at the link above.





Southampton

Young Adults Employment Hub

An innovative partnership between Southampton City Council and Department for Work and Pensions, providing support for 18-24 year olds looking for work and training

We can support with:

- Writing and updating CVs
- Application forms for jobs and Kickstart Placements
- Finding training courses
- Building skills and confidence
- Signposting to specialist advice & support with housing, benefits, health and much more
- Digital hub of support focussed on employability, health and wellbeing

www.access-southampton.co.uk/young-adults-employment-hub

**Speak to your Jobcentre Plus
Work Coach to be referred.**



Department
for Work &
Pensions



Call: 07811 165129

Email: Employment.Support.Team@southampton.gov.uk

Leave a note in your Universal Credit journal asking to find out more

Do you need support to find a job?






If you've not worked for a while and you're looking for a job, we can help you:

- ✓ Explore your skills focusing on what you **CAN** do.
- ✓ Find volunteering, training and work experience.
- ✓ Work with potential employers to meet your needs.
- ✓ Write CVs and applications.
- ✓ Practice interviews.

We will support at work and provide consistent, 1-1 support throughout your employment journey.

Contact us

✉ employment.support.team@southampton.gov.uk
☎ 023 8091 7585    @sotoncareers

Visit: www.southampton.gov.uk/EST

Useful websites, information and contact details:

National Careers Service	Tel: 0800 100 900 Website: nationalcareersservice.direct.gov.uk
GROW People	Website: southampton.gov.uk/grow/people
Access to Work	www.gov.uk/access-to-work
Citizens Advice	citizensadvice-southampton.org.uk
Understanding Universal Credit	www.understandinguniversalcredit.gov.uk
Cost of Living Support	www.southampton.gov.uk/cost-of-living
No Limits	Tel: 023 8022 4224 Website: No Limits Website

Job Search Websites:

Find a Job
Daily Echo
Reed
Total Jobs
NHS Jobs
Monster
Jobsite
Fish4Jobs
Indeed
CV Library

Notes and Ideas

Next Bulletin: Thursday 14 November 2024

Spotted a broken link? [Let us know](#)

Want to advertise your vacancies? [Contact us](#)